

**Hillphoenix**

a **DOVER** company

CF

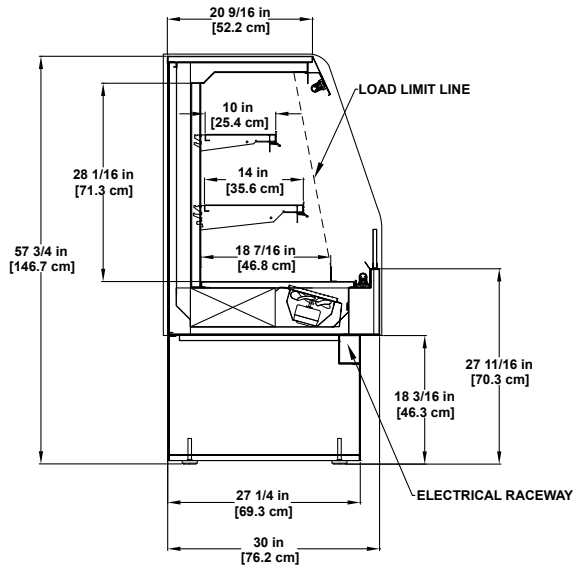
# Self-Service Multi-Deck

Refrigerated general merchandiser.



Photo may depict options not included on standard models.

Model CF  
Self-Service Multi-Deck



Please consult Hillphoenix Engineering Reference Manual for dimensions, plan views and technical specifications. Specifications subject to change without notice. Designed for optional performance in store environments where temperature and humidity do not exceed 75 degrees and 55% R.H. Certified to UL 471 and ANSI/NSF Standard 7.

### Base Model Features

- Closed base construction with leveling pads.
- Standard 57-3/4"H and 30"D.
- 18-3/16"H painted metal base, front and sides.
- Painted metal exterior.
- Stainless steel exterior trim.
- Painted metal interior.
- Interior trim to match interior.
- Painted metal to match exterior front, side and rear base.
- Outside back and 20-9/16"D case top painted to match exterior.
- 5-1/2"H x 1/2" thick polished, straight die board plex.
- (1) row each 10" and 14" adjustable angled, black painted metal shelving with black price tag molding with 3" polycarbonate product stop.
- Clearvoyant® LED canopy top light.
- Painted black metal, flat bottom deck with 2" metal product stop.
- Front electrical raceway.
- Solar digital thermometer.
- Self-contained refrigeration package.

### Available Options

- Available lengths: 4', 6', 8', 10' and 12'.
- No miters or wedges available.
- 35"D case with up to (1) 16" and (1) 20" row of shelves.
- Exterior finishes: Exterior grade laminate.
- Recessed casters.
- Cart bumper.
- Econofrost night cover with or without cassette.
- Polycarbonate night cover.
- Magnetic night shield.
- Swing rear load doors (dual plenum-add 2-1/2" to overall case depth).
- Sliding rear load doors (dual plenum-add 2-1/2" to overall case depth).
- Rear raceway.
- Undershelf lighting.
- Remote, DX, or Glycol refrigeration package.



Dover Food Retail  
Conyers, GA USA  
844.591.5937  
hillphoenix.com

©2018 Hillphoenix, Inc.

