

Self-Service Open Multi-Deck Back Bar Merchandiser w/ Lower Storage (RLS Optional)

DB REMOTE - 4', 6', 8', 10' & 12'

Electrical Data

Model		Fans per Case	High Efficiency Fans		Anti-Condensate Fans		Drain Heaters		Optional Defrost Heaters		RLS ²		
			120 Volts		120 Volts		120 Volts		120 Volts		Fans per Case	Unit Cooler Fans	
			Amps	Watts	Amps	Watts	Amps	Watts	Amps	Watts		120 Volts	
											Amps	Watts	
DB	4'	2	0.6	72	---	---	---	---	---	---	1	0.24	20
	6'	3	0.9	108	---	---	---	---	---	---	1	0.24	20
	8'	4	1.2	144	---	---	---	---	---	---	2	0.48	40
	10'	5	1.5	180	---	---	---	---	---	---	2	0.48	40
	12'	6	1.8	216	---	---	---	---	---	---	3	0.72	60

Lighting Data

Model		Lights per Row	Light Length (ft)	Clearvoyant 4 LED Lighting (Per Light Row)			
				Standard Power (Cornice or Shelf)		High Power (Cornice)	
				120 Volts		120 Volts	
				Amps	Watts	Amps	Watts
DB	4'	1	4	0.05	5.9	0.12	14.9
	6'	2	3	0.08	9.4	0.20	23.8
	8'	2	4	0.10	11.8	0.24	29.8
	10'	2	5	0.12	15.0	0.30	37.0
	12'	3	4	0.15	17.7	0.36	44.7

Guidelines & Control Settings (DX)

Model		Conventional ³ BTUH/ft	Parallel ⁴ BTUH/ft	Superheat Set Point @ Bulb (°F)	Evaporator (°F)	Discharge Air (°F)	Discharge Air ⁵ Velocity (FPM)
DB	DX	1366	1308	6-8	26	32	75-100
	RLS	180	168	6-8	26	32	75-100

Defrost Controls

Model		Defrosts per Day	Run-Off Time (min)	Electric Defrost		Timed-Off Defrost		Hot Gas Defrost	
				Fail-Safe (min)	Termination Temp (°F)	Fail-Safe (min)	Termination Temp (°F)	Fail-Safe (min)	Termination Temp (°F)
DB	DX	6	---	---	---	30/ ⁶ 10	42	---	---
	RLS	6	---	---	---	30/ ⁷ 20	45	---	---

1 NOTE: "---" indicates data not applicable.

2 RLS - Refrigerated Lower Storage

3,4 Listed BTUH indicates unlighted shelves. Add the following for lighted shelves:

4' Shelf LED: 36 BTUH

4' Canopy LED: 72 BTUH

3' Shelf LED: 27 BTUH

3' Hi-Output LED: 54 BTUH

5 Average discharge air velocity at peak of defrost.

6,7 Time-off duration for defrost with no termination control.

Engineered for stores with ambient conditions not to exceed 75° and 55% relative humidity.

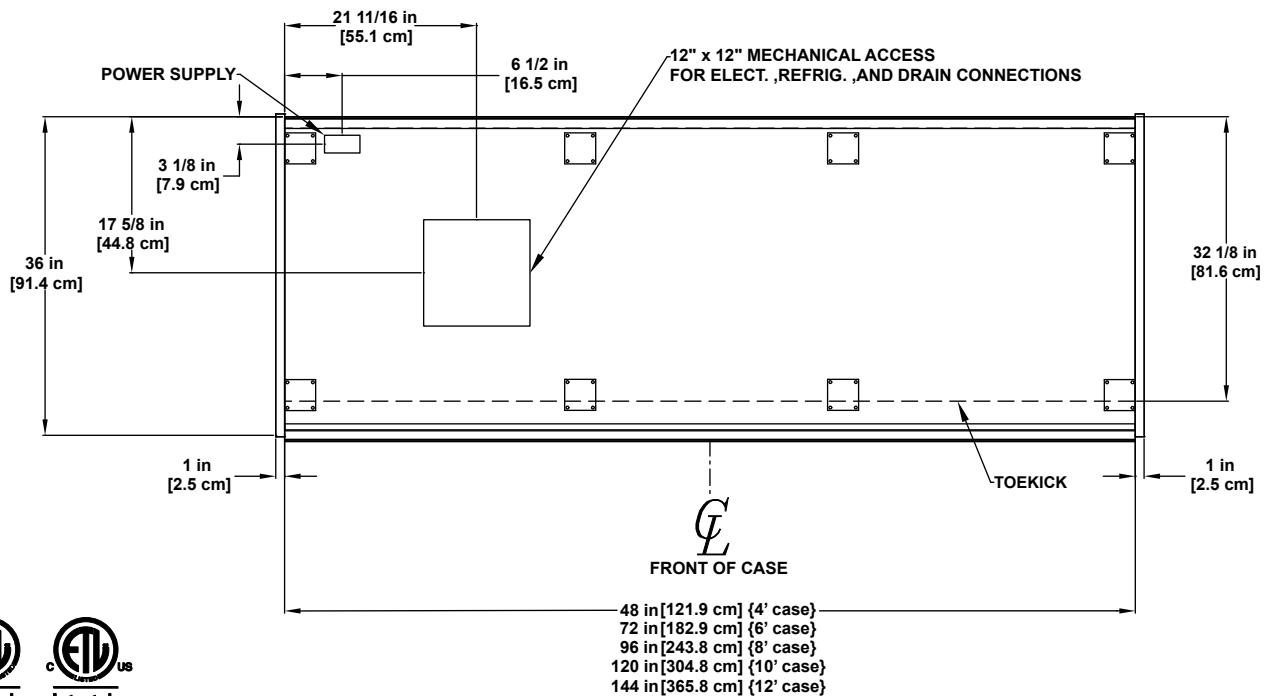
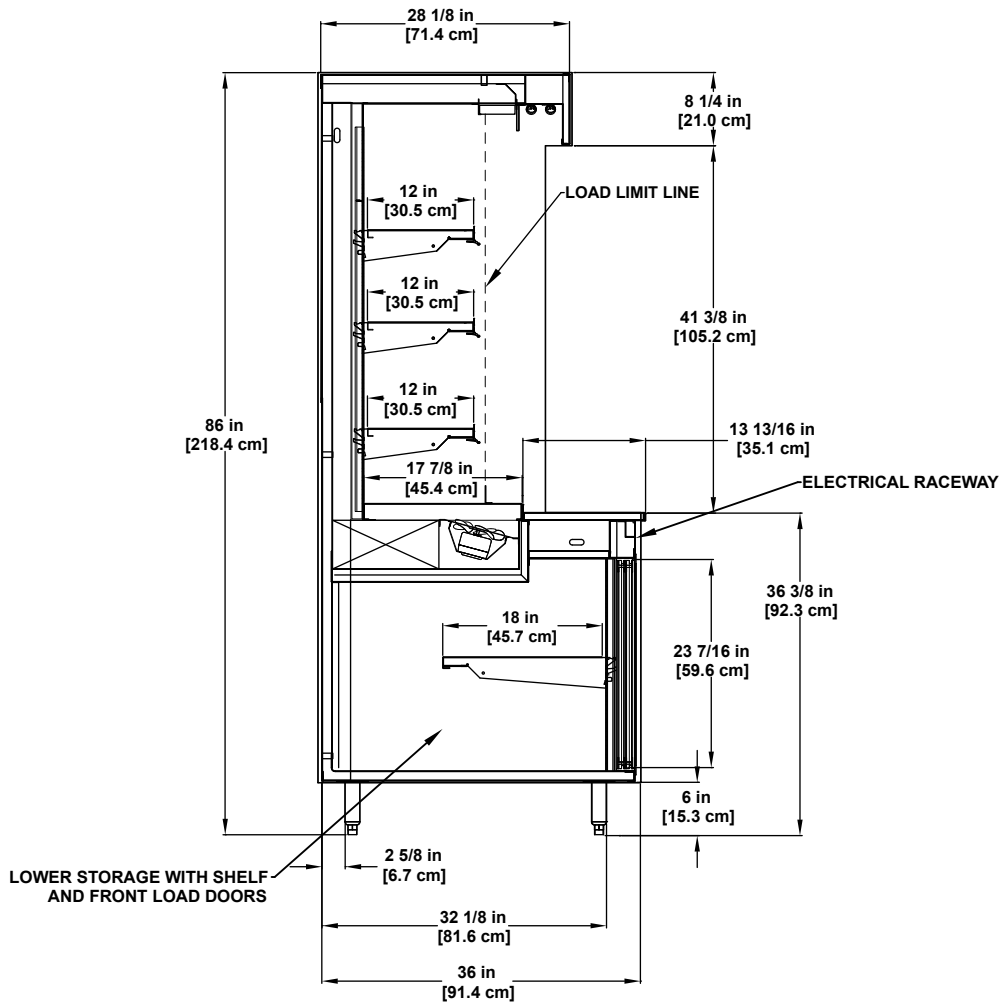
Due to engineering improvements specifications may change without notice.

All measurements are taken per ASHRAE - 72 - 2005 specifications.

Hillphoenix refrigerated display cases for sale in the United States meet or exceed department of energy 2017 efficiency requirements.

Numbers are based on standard case sizes. Consult engineering.





SELF-SERVICE
MULTI-DECK

Bakery / Cheese / Deli