

# Self-Service Open Multi-Deck End-Cap Island Merchandiser & End Cap

## HVI 3' DEEP & 62" TALL SELF-CONTAINED - 305 & 305-EC

### System Requirements

Model	Volts	Phase	Total Amps	Minimum Circuit Ampacity	Maximum Overcurrent Protection
HVI-3	305				

### Electrical Data

Model	Volts	Fans per Case	High Efficiency Fans		Anti-Condensate Fans		Drain Pumps		Evaporator Pan Heaters			Auxiliary Fans	
			120 Volts		120 Volts		120 Volts					120 Volts	
			Amps	Watts	Amps	Watts	Amps	Watts	Volts	Amps	Watts	Amps	Watts
HVI-3	305	4	1.2	138	---	---	---	---	208	7.2	1500	---	---

### Lighting Data

Model	Volts	Lights per Row	Light Length (ft)	Fluorescent Lighting (Per Light Row)		Clearvoyant LED Lighting (Per Light Row)							
						Standard Power (Cornice or Shelf)			High Power (Cornice)				
				120 Volts		120 Volts			120 Volts				
				Amps	Watts	Maximum Allowable Rows	Amps	Watts	Maximum Allowable Rows	Amps	Watts	Maximum Allowable Rows	
HVI-3	305	1	10	---	---	---	---	---	---	---	0.35	42.2	2

### Guidelines & Control Settings

Model	24hr Energy Usage (kWh/ft)	Suction Temperature @ Case Outlet (°F)	Superheat Set Point @ Bulb (°F)	Discharge Air (°F)	Discharge <sup>2</sup> Air Velocity (FPM)
HVI-3	---	55.3	10	32	150

### Condensing Unit Data

Model	Volts	Phase	HP	RLA <sup>3</sup> (amps)	LRA <sup>4</sup> (amps)	Refrig.	Condenser Fans		Lbs. of Refrig.	
							Amps	Watts		
HVI-305-EC	305	208	1	1.5	7.5	40	404a	0.94	196	5.8-0.6

### Defrost Controls

Model	Defrosts per Day	Run-Off Time (min)	Electric Defrost		Timed-Off Defrost		Hot Gas Defrost	
			Fail-Safe (min)	Termination Temp (°F)	Fail-Safe (min)	Termination Temp (°F)	Fail-Safe (min)	Termination Temp (°F)
HVI-305-EC	6	---	---	---	30	42	---	---

1 NOTE: "---" indicates data not applicable.

2 Average discharge air velocity at peak of defrost.

3 RLA - Running Load Amps

4 LRA - Locked Rotor Amps

Engineered for stores with ambient conditions not to exceed 75° and 55% relative humidity.

Due to engineering improvements specifications may change without notice.

All measurements are taken per ASHRAE - 72 - 2005 specifications.

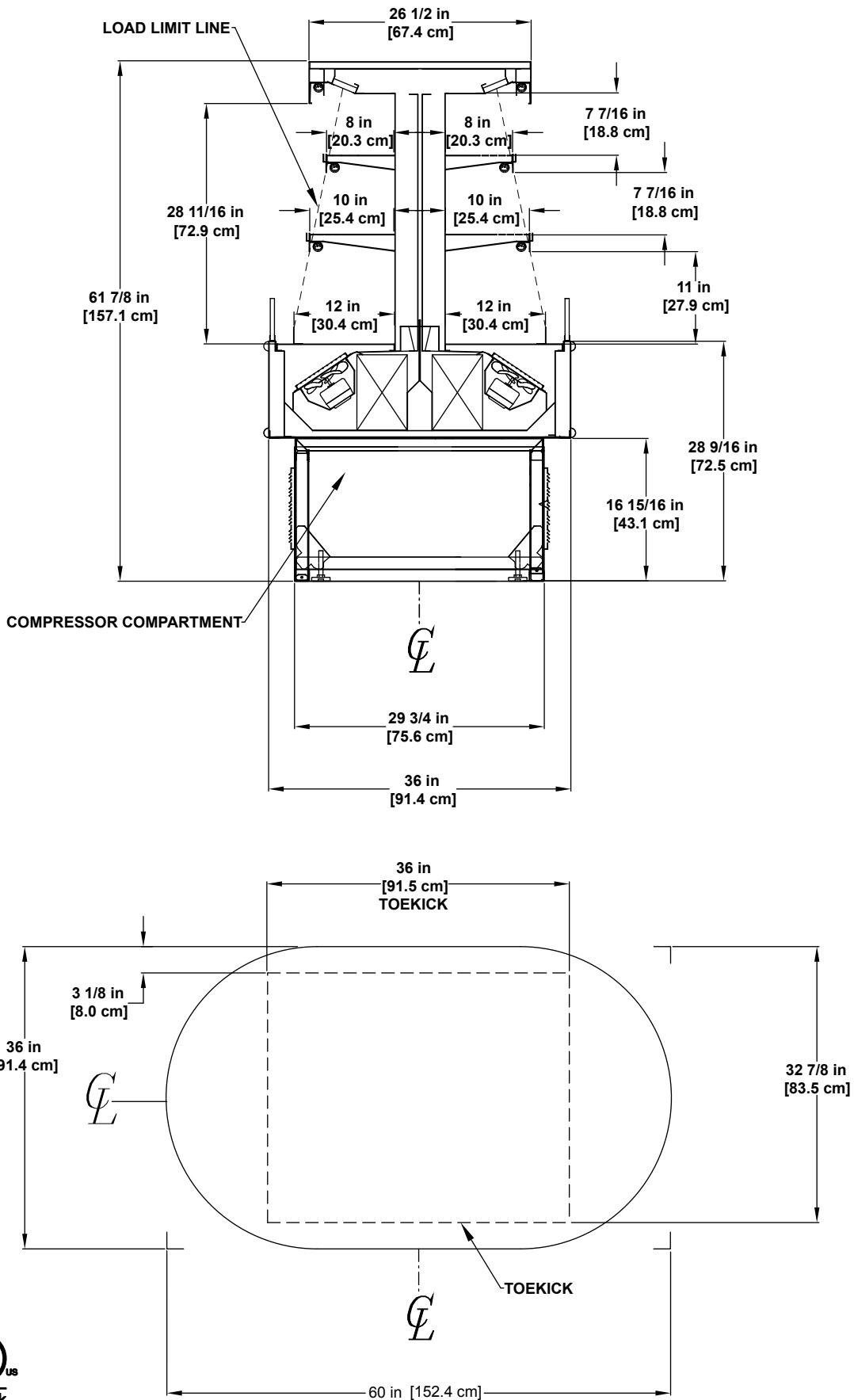
Numbers are based on standard case sizes. Consult engineering.



(3' Deep & 62" Tall Self-Contained)

SELF-SERVICE  
MULTI-DECK

Bakery / Beverage / Dairy / Deli / Produce



**HVI-3-305-EC**  
**(3' Deep & 62" Tall End Cap Self-Contained)**

