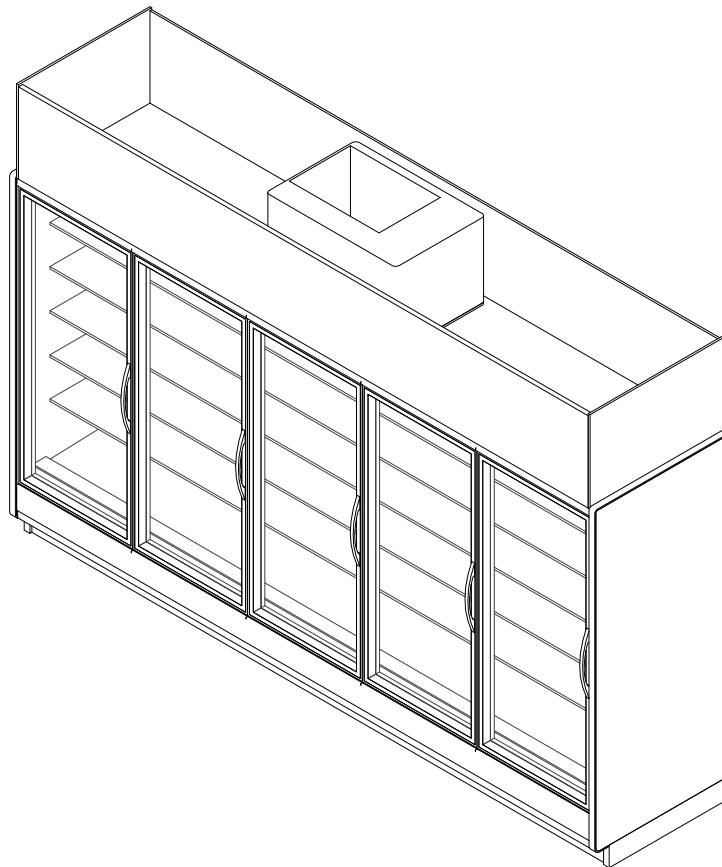


### GENERAL NOTES

- Light controls - occupancy sensors are required.  
Option 1: OEM Provided: Lighting controls (on/off) are standard unless otherwise specified.  
Option 2: End User Provided: Light controls should be based on occupancy sensors.



SHIPPING WEIGHT	
Case	Weight
JNRBHA	---



COMPONENT

ALL MEASUREMENTS ARE TAKEN PER ASHRAE-72-2005 SPECIFICATIONS. HILLPHOENIX REFRIGERATED DISPLAY CASES FOR SALE IN THE UNITED STATES MEET OR EXCEED DEPARTMENT OF ENERGY 2017 REQUIREMENTS.

### JNRBHA

Rev. Date	Rev. #	Rev. Title
2-25-19	5	DATA UPDATE
1-31-19	4	DATA UPDATE

**Hillphoenix**

A DOVER COMPANY

SYSTEM REQUIREMENT				
Case Length	Volts	Phase	Frequency	Provided Overcurrent Protection
2 Door	208	1	60	20
3 Door	208	1	60	20
4 Door	208	1	60	20
5 Door	208	1	60	20

GUIDELINES AND CONTROL SETTINGS			
Application	Superheat Set Point @ Bulb (°F)	Discharge Air (°F)	Discharge Air Velocity (FPM)
Beverage	6 - 8	35	230
Dairy	6 - 8	31	230
Deli	6 - 8	30	230

Case Length	24hr Energy Usage (kWh)*
	DOE
2 Door	6.09
3 Door	8.55
4 Door	10.20

\*- 24 Hour Energy values includes evaporate fans, standard LEDs, anti-condensate heat & condensing unit

CONDENSING UNIT DATA								
Case Length	Volts	Phase	Frequency	Horsepower	Running Load Amps (RLA) (Amps)	Locked Rotor Amps (LRA) (Amps)	Refrigerant	Lbs. of Refrigerant
2 Door	208	1	60	1/3	4.2	16.8	R404A	2.2
3 Door	208	1	60	1/3	4.2	16.8	R404A	2.6
4 Door	208	1	60	1/3	4.2	16.8	R404A	3.0
5 Door	208	1	60	1/3	5.3	26.5	R404A	3.5

### NOTES

- "---" indicates that this feature is not an option on this case model.
- Anti-condensate heat values represent a door with no heat.
- Listed discharge air velocity represents the average velocity at the peak of defrost.
- Temperature and defrost settings listed above are recommended start-up settings. Final operational settings may need to be adjusted for the store conditions in which the case operates.
- The recommended evaporator temperatures may need to be adjusted based on system setup, store conditions, etc. The minimum recommended evaporator temperature is 4°F below the listed evaporator temperature.
- Light wattages above reflect 100% run time. To acquire DOE representation, reduce the light wattages by 42% at 75°F/55%RH.
- Data listed is for Optimax Radiant and low power Optimax Pro (high power available). For other lighting options please contact your sales representative.



ALL MEASUREMENTS ARE TAKEN PER ASHRAE-72-2005 SPECIFICATIONS. HILLPHOENIX REFRIGERATED DISPLAY CASES FOR SALE IN THE UNITED STATES MEET OR EXCEED DEPARTMENT OF ENERGY 2017 REQUIREMENTS.

### JNRBHA

Rev. Date	Rev. #	Rev. Title
2-25-19	5	DATA UPDATE
1-31-19	4	DATA UPDATE

**Hillphoenix**  
A DOVER COMPANY

DEFROST CONTROLS				
Application	Defrosts Per Day	Run-Off Time (Min)	Fail-Safe (Min)	Termination Temp (F)
Beverage	2	0	46	44
Dairy/Deli	2	0	46	40

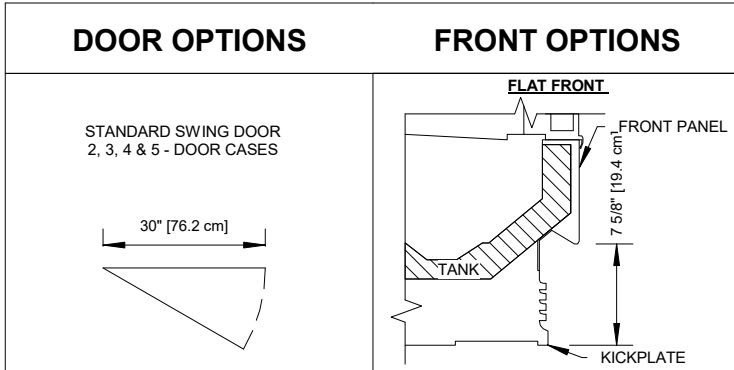
DEFROST SCHEDULE	
Defrosts Per Day	Time
1	12 Midnight
2	12 a.m. - 12 p.m.
3	6 a.m. - 2 p.m. - 10 p.m.
4	12 a.m. - 6 a.m. - 12 p.m. - 6 p.m.



ALL MEASUREMENTS ARE TAKEN PER ASHRAE-72-2005 SPECIFICATIONS. HILLPHOENIX REFRIGERATED DISPLAY CASES FOR SALE IN THE UNITED STATES MEET OR EXCEED DEPARTMENT OF ENERGY 2017 REQUIREMENTS.

## JNRBHA

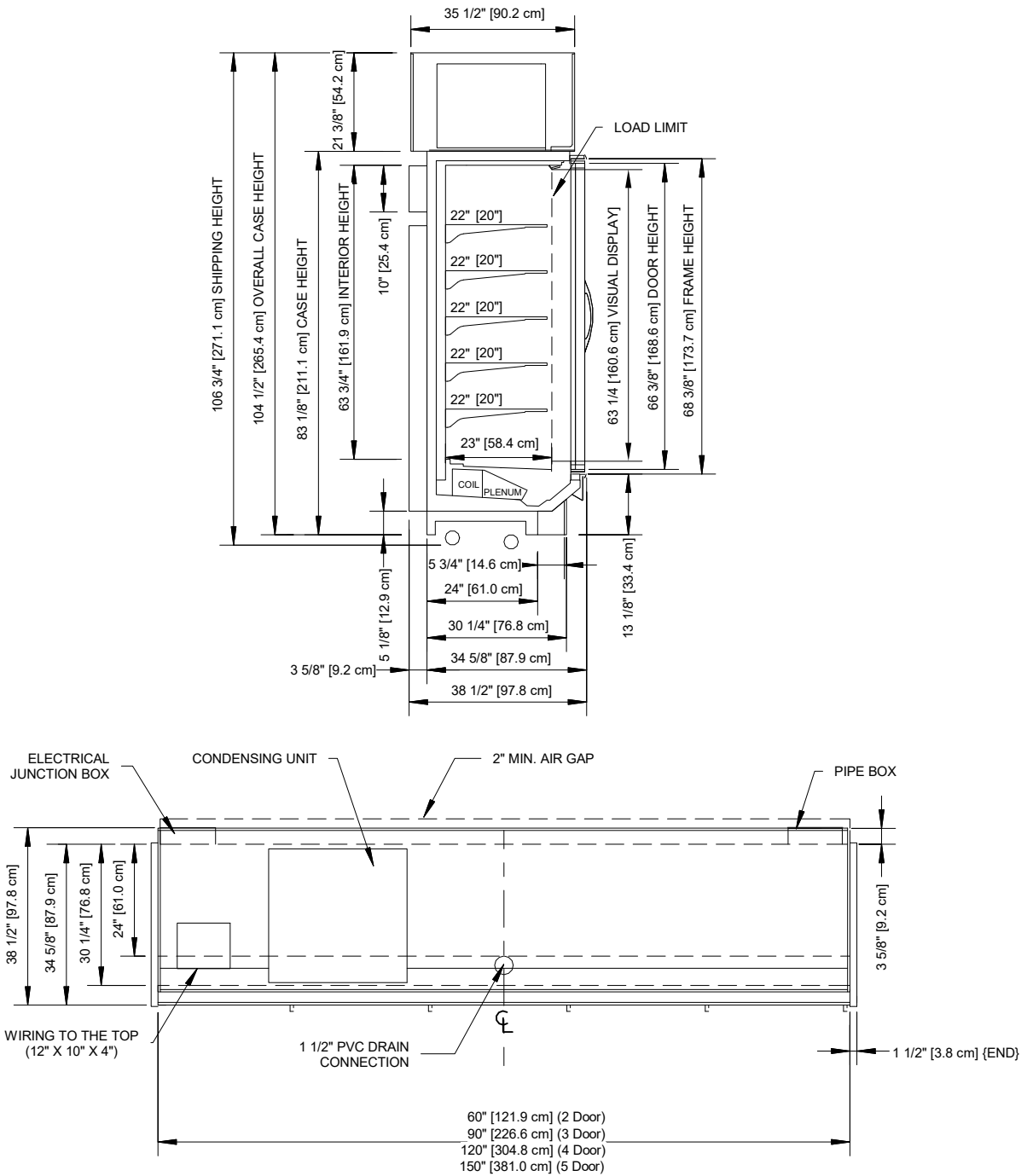
Rev. Date	Rev. #	Rev. Title
2-25-19	5	DATA UPDATE
1-31-19	4	DATA UPDATE



ALL MEASUREMENTS ARE TAKEN PER ASHRAE-72-2005 SPECIFICATIONS. HILLPHOENIX REFRIGERATED DISPLAY CASES FOR SALE IN THE UNITED STATES MEET OR EXCEED DEPARTMENT OF ENERGY 2017 REQUIREMENTS.

## JNRBHA

Rev. Date	Rev. #	Rev. Title
2-25-19	5	DATA UPDATE
1-31-19	4	DATA UPDATE



### NOTES

\* : STUB-UP AREA.

\*\* : RECOMMENDED STUB-UP CENTERLINE FOR ELECTRICAL AND HUB DRAINS.

- Ends add approximately 1" to case height, 1/2" to the back & 1" to the front.



ALL MEASUREMENTS ARE TAKEN PER ASHRAE-72-2005 SPECIFICATIONS. HILLPHOENIX REFRIGERATED DISPLAY CASES FOR SALE IN THE UNITED STATES MEET OR EXCEED DEPARTMENT OF ENERGY 2017 REQUIREMENTS.

### JNRBHA

Rev. Date	Rev. #	Rev. Title
2-25-19	5	DATA UPDATE
1-31-19	4	DATA UPDATE