

# Self-Service Open Multi-Deck Merchandiser

## PF 54" SELF-CONTAINED - 4' & 6'

### System Requirements

Model		Volts	Phase	Total Amps	Minimum Circuit Ampacity	Maximum Overcurrent Protection
PF	4'	120	1	20.26	25.3	45
	6'	120/208	1	13.77	17.21	30

### Electrical Data

Model		Fans per Case	High Efficiency Fans		Anti-Condensate Heaters		Drain Pumps		Evaporator Pan Heaters			Auxiliary Fans	
			120 Volts		120 Volts		120 Volts		Volts	Amps	Watts	120 Volts	
			Amps	Watts	Amps	Watts	Amps	Watts				Amps	Watts
PF	4'	1	0.3	36	0.3	36	---	---	120	8.3	996	---	---
	6'	2	0.6	72	0.3	36	---	---	208	4.8	998	0.3	36

### Lighting Data

Model		Lights per Row	Light Length (ft)	Clearvoyant 4 LED Lighting (Per Light Row)			
				Standard Power (Cornice or Shelf)		High Power (Cornice)	
				120 Volts		120 Volts	
				Amps	Watts	Amps	Watts
PF	4'	1	4	0.05	5.9	0.12	14.9
	6'	2	3	0.08	9.4	0.20	23.8

### Guidelines & Control Settings

Model	24hr Energy Usage (kWh/ft)	Suction Temperature @ Case Outlet (°F)	Superheat Set Point @ Bulb (°F)	Discharge Air (°F)	Discharge Air <sup>2</sup> Velocity (FPM)
PF	---	+20	8-10	28	250

### Condensing Unit Data

Model		Volts	Phase	HP	RLA <sup>3</sup> (amps)	LRA <sup>4</sup> (amps)	Refrig.	Condenser Fans		Lbs. of Refrig.
								Amps <sup>4</sup>	Watts	
PF	4'	120	1	1/2	9.25	54.5	404a	1.3	156	2.2
	6'	208	1	1	6.2	40	404a	0.85	177	4.4

### Defrost Controls

Model	Defrosts per Day	Run-Off Time (min)	Electric Defrost		Timed-Off Defrost		Hot Gas Defrost	
			Fail-Safe (min)	Termination Temp (°F)	Fail-Safe (min)	Termination Temp (°F)	Fail-Safe (min)	Termination Temp (°F)
PF	4	30	---	---	---	---	---	---

1 NOTE: "---" indicates data not applicable.

2 Average discharge air velocity at peak of defrost.

3 RLA - Running Load Amps

4 LRA - Locked Rotor Amps

Engineered for stores with ambient conditions not to exceed 75° and 55% relative humidity.

Due to engineering improvements specifications may change without notice.

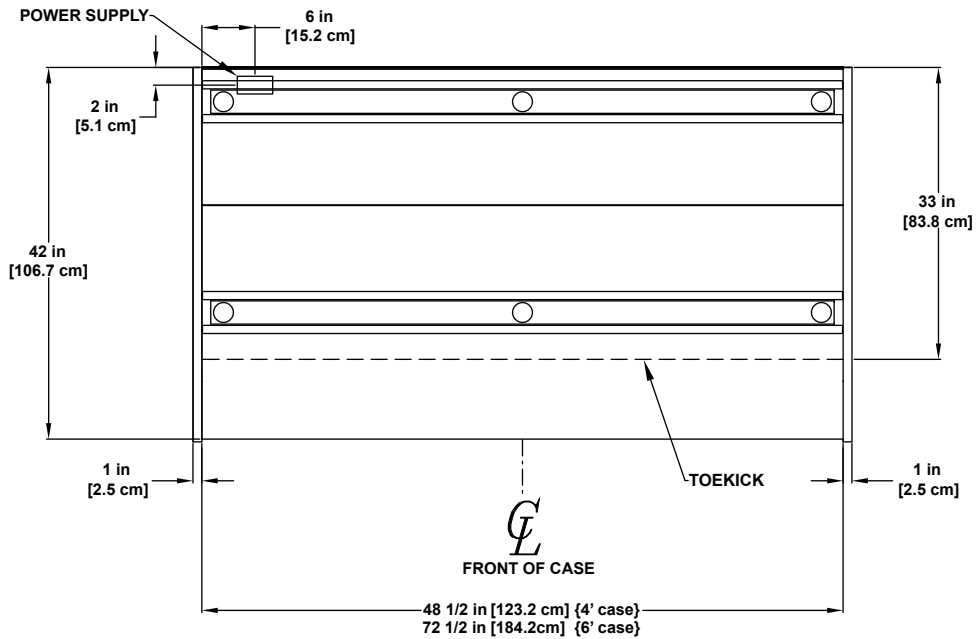
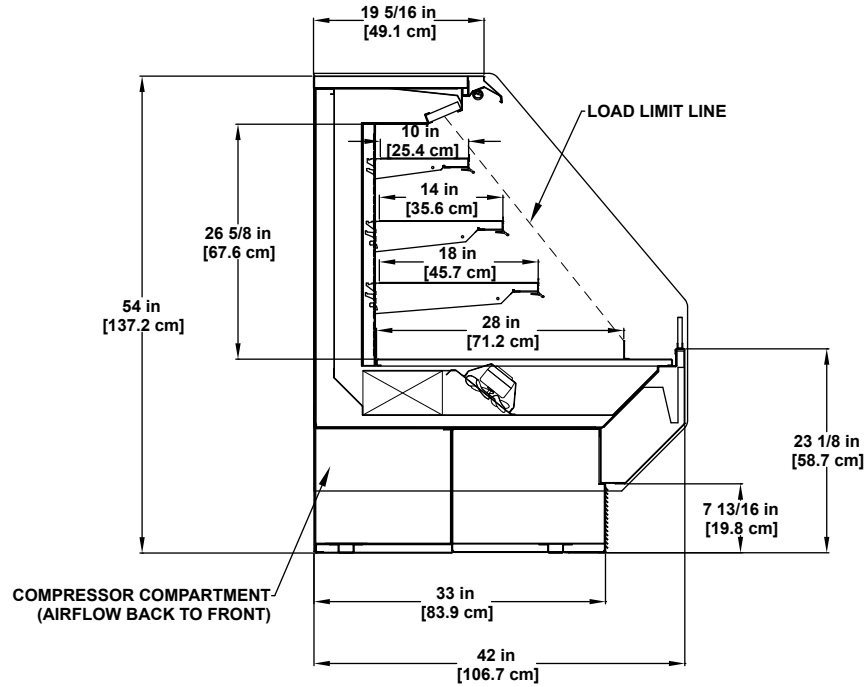
All measurements are taken per ASHRAE - 72 - 2005 specifications.

Hillphoenix refrigerated display cases for sale in the United States meet or exceed department of energy 2017 efficiency requirements.

Numbers are based on standard case sizes. Consult engineering.



**PF**  
**(54" Self-Contained)**



SELF-SERVICE  
MULTI-DECK

Bakery / Beverage / Cheese / Deli / Meat