

Self-Service Open Multi-Deck Island Merchandiser

PFI 5' DEEP & 54" TALL REMOTE - 508, 509, 510, 511, 512, 513, & 514

Electrical Data

Model		Fans per Case	High Efficiency Fans		Anti-Condensate Fans		Drain Heaters		Optional Defrost Heaters	
			120 Volts		120 Volts		120 Volts		208 Volts	
			Amps	Watts	Amps	Watts	Amps	Watts	Amps	Watts
PFI-5	508	8	2.4	288	---	---	---	---	---	---
	509	8	2.4	288	---	---	---	---	---	---
	510	10	3.0	360	---	---	---	---	---	---
	511	10	3.0	360	---	---	---	---	---	---
	512	12	3.6	432	---	---	---	---	---	---
	513	12	3.6	432	---	---	---	---	---	---
	514	14	4.2	504	---	---	---	---	---	---

Lighting Data

Model		Lights per Row	Light Length (ft)	Fluorescent Lighting (Per Light Row)			Clearvoyant LED Lighting (Per Light Row)					
				120 Volts			Standard Power (Cornice or Shelf)			High Power (Cornice)		
				120 Volts			120 Volts			120 Volts		
				Amps	Watts	Maximum Allowable Rows	Amps	Watts	Maximum Allowable Rows	Amps	Watts	Maximum Allowable Rows
PFI-5	508	---	---	0.84	193	4	0.20	21	4	0.35	38	4
	509	---	---	1.08	222	4	0.28	30	4	0.52	54	4
	510	---	---	1.22	238	4	0.35	36	4	0.64	66	4
	511	---	---	1.68	294	4	0.35	42	4	0.70	75	4
	512	---	---	1.92	322	4	0.48	51	4	0.82	92	4
	513	---	---	2.16	351	4	0.57	60	4	0.99	108	4
	514	---	---	3.66	394	4	0.55	63	4	1.05	113	4

Lighting Data (End Cap)

Model	End Cap	Fluorescent Lighting (Per Light Row)		Clearvoyant LED Lighting (Per Light Row)			
		120 Volts		Standard Power (Cornice or Shelf)		High Power (Cornice)	
		120 Volts		120 Volts		120 Volts	
		Amps	Watts	Amps	Watts	Amps	Watts
PFI-5	Canopy	0.27	32	0.08	10	0.13	17
	Top Shelf	0.20	24	0.06	7.5	0.10	13.5
	Bottom Shelf	0.32	38	0.08	10	0.13	17

Engineered for stores with ambient conditions not to exceed 75° and 55% relative humidity.
 Due to engineering improvements specifications may change without notice.
 All measurements are taken per ASHRAE - 72 - 2005 specifications.
 Numbers are based on standard case sizes. Consult engineering.



(5' Deep & 54" Tall Remote)

Guidelines & Control Settings (DX)

Model		Conventional ²BTUH	Parallel ³BTUH	Superheat Set Point @ Bulb (°F)	Evaporator (°F)	Discharge Air (°F)	Discharge Air⁴ Velocity (FPM)
PFI-5	508	12,650	11,670	10	24	27	140
	509	15,850	14,625	10	24	27	140
	510	19,050	17,545	10	24	27	140
	511	21,950	20,250	10	24	27	140
	512	24,875	22,950	10	24	27	140
	513	27,775	25,625	10	24	27	140
	514	30,100	27,775	10	24	27	140

Defrost Controls

Model	Defrosts per Day	Run-Off Time (min)	Electric Defrost		Timed-Off Defrost		Hot Gas Defrost	
			Fail-Safe (min)	Termination Temp (°F)	Fail-Safe (min)	Termination Temp (°F)	Fail-Safe (min)	Termination Temp (°F)
PFI-5	6	---	---	---	45	42	---	---

- 1 NOTE: " - - - " indicates data not applicable.
- 2,3 BTUH values shown include lights.
- 4 Average discharge air velocity at peak of defrost.

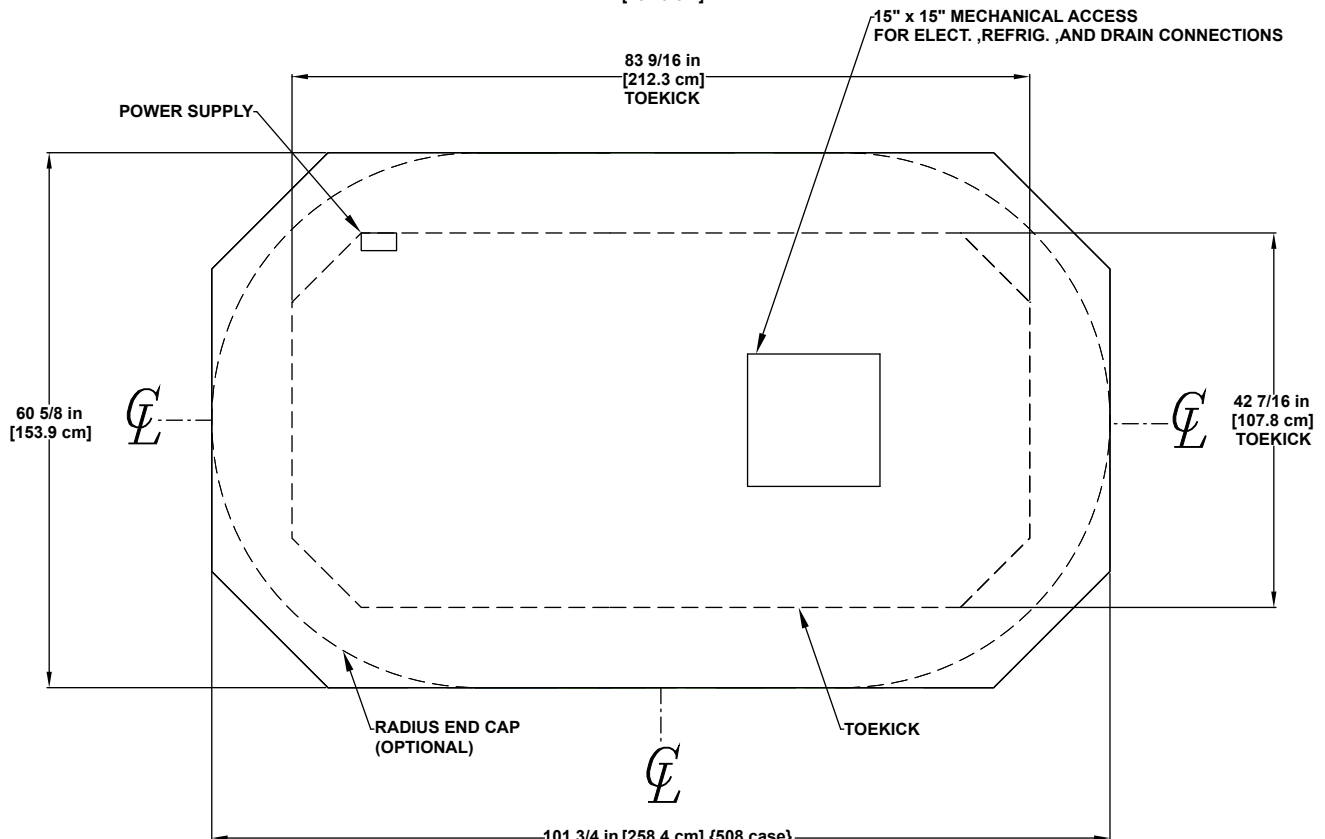
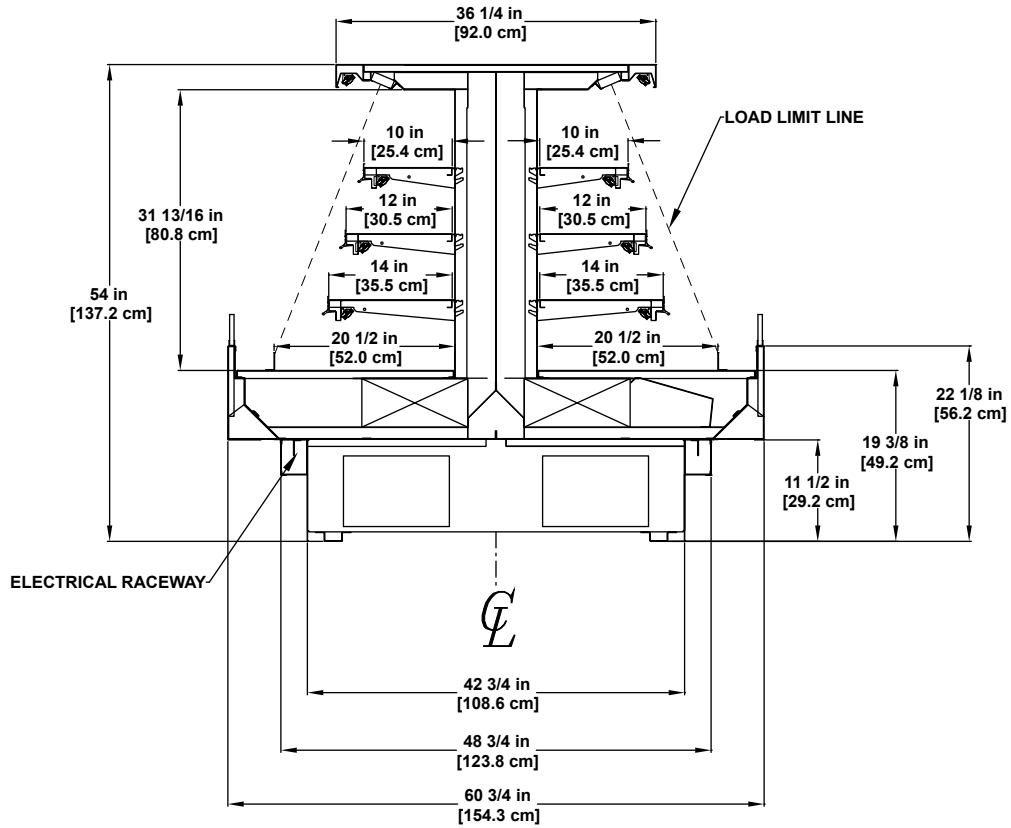
SELF-SERVICE
MULTI-DECK

Bakery / Beverage / Dairy / Deli / Produce

Engineered for stores with ambient conditions not to exceed 75° and 55% relative humidity.
 Due to engineering improvements specifications may change without notice.
 All measurements are taken per ASHRAE - 72 - 2005 specifications.
 Numbers are based on standard case sizes. Consult engineering.



(5' Deep & 54" Tall Remote)



- 101 3/4 in [258.4 cm] {508 case}
- 113 3/4 in [288.9 cm] {509 case}
- 125 3/4 in [319.4 cm] {510 case}
- 137 3/4 in [349.9 cm] {511 case}
- 149 3/4 in [380.4 cm] {512 case}
- 161 3/4 in [410.8 cm] {513 case}
- 173 3/4 in [441.3 cm] {514 case}

