

**Hillphoenix**

a **DOVER** company

PT-R

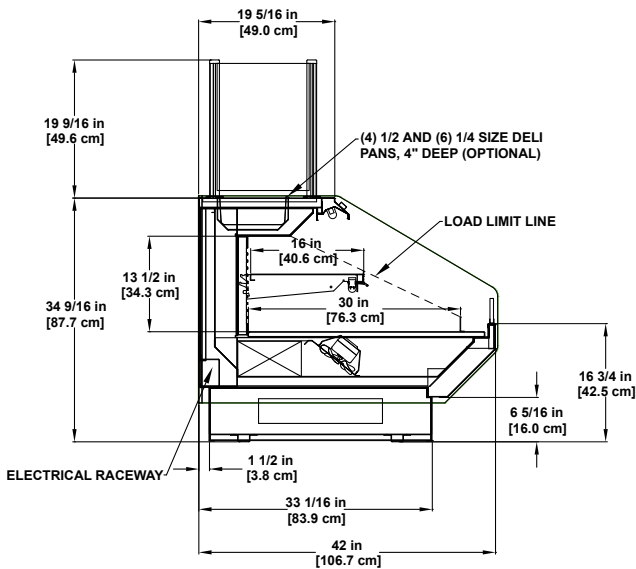
# Self-Service Multi-Deck

Refrigerated merchandiser for bakery, beverage, deli, sushi with prep area.



Photo may depict options not included on standard models.

Model PT-R  
Self-Service Multi-Deck



Please consult Hillphoenix Engineering Reference Manual for dimensions, plan views and technical specifications. Specifications subject to change without notice. Designed for optional performance in store environments where temperature and humidity do not exceed 75 degrees and 55% R.H. Certified to UL 471 and ANSI/NSF Standard 7.

### Base Model Features

- Sled runner base construction.
- Standard 34-9/16"H with 6-5/16" base height.
- Standard 42" case depth.
- Standard 19-5/16" case top depth.
- 45 degree front dieboard.
- Painted metal exterior.
- Stainless steel exterior trim.
- Stainless steel front and side toekick.
- 3-1/2" polished dieboard plex.
- Black painted metal interior.
- Interior trim to match interior.
- (1) row each 16" adjustable angle painted metal shelving with price tag molding and product stop.
- Flat bottom merchandising deck with 2" metal product stop.
- Clearvoyant® LED cornice light.
- Rear electrical raceway.
- Hard wire power connection.
- Energy efficient fans.
- Solar digital thermometer.

### Available Options

- Available lengths: 4', 6', 8', 10' and 12'.
- No miters or wedges available on 72"H case.
- Optional case heights available: 39-1/2", 48", 54" and 72".
  - Option: 39.5" Case heights with 1 row each 10" and 14" adjustable painted metal shelving and 3-1/2" flame polished dieboard plex.
  - Option: 48" Case heights with 1 row each 10" and 16" adjustable painted metal shelving and 5-1/2" flame polished dieboard plex (see PF standards).
  - Option: 54" case height with 1 row each 10", 14" & 18" adjustable painted metal shelving and 5-1/2" flame polished dieboard plex (see PF standards).
  - Option: 72" case height with 1 row each 10", 12", 14" & 18" adjustable painted metal shelving and 5-1/2" flame polished dieboard plex (see PF standards).
- Alternate toekick height include: 7-13/16"H with no change to the overall height.
- Bullet leg base with adjustable height toekick.
- Black painted metal base trim.
- Cart bumper.
- Interior and exterior stainless steel finish.
- Stainless steel outside back and case top.
- White or other painted metal interior finish.
- Solid surface, poly, stainless steel or stone case top.
- Undershelf lighting.
- Front raceway.
- Clearvoyant LED undershelf lights.
- Solid interior painted, solid interior mirror polish stainless steel, thermal glass divider or glass ends.
- Clear or Solid lower storage doors.



Dover Food Retail  
Conyers, GA USA  
844.591.5937  
hillphoenix.com

©2018 Hillphoenix, Inc.

