

**Hillphoenix**

a **DOVER** company

PTDR-H

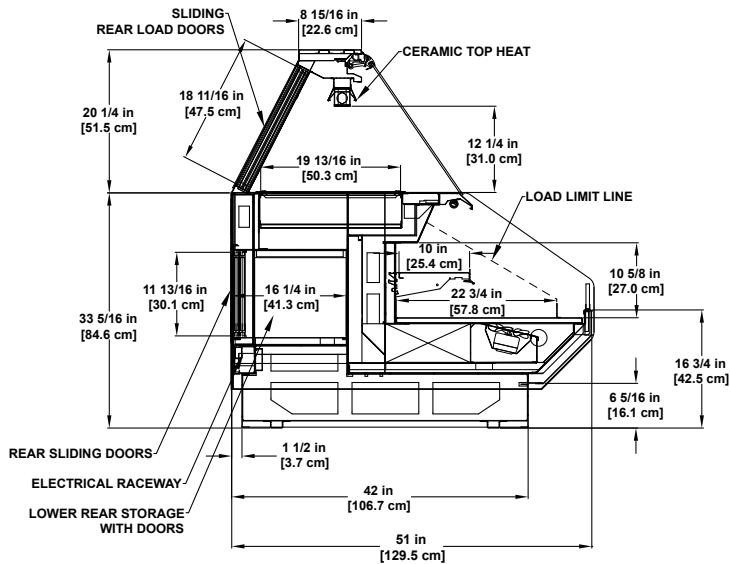
## Open Multi-Deck

Combination service /self-service merchandiser for refrigerated bakery, beverage, dairy as well as deli and hot food items with lower rear storage.



Photo may depict options not included on standard models.

## Model PTDR-H Open Multi-Deck



Please consult Hillphoenix Engineering Reference Manual for dimensions, plan views and technical specifications. Specifications subject to change without notice. Designed for optional performance in store environments where temperature and humidity do not exceed 75 degrees and 55% R.H. Certified to UL 471 and ANSI/NSF Standard 7.

### Available Options

- Available lengths: 4', 6', 8', 10' and 12'.
- Available 55" case depth.
- Alternate toekick height include: 7-13/16"H.
- Available 38" base height (37-3/8").
- Bullet leg base with adjustable height toekick.
- Black painted metal base trim.
- Cart bumper.
- Interior and exterior stainless steel finish.
- White or other painted metal interior finish.
- 1 Row 14" painted metal adjustable with 38" base height.
- Undershelf lighting.
- Clearvoyant LED shelf lights.
- 16"D refrigerated rear storage , sliding glass rear load glass doors.
- Solid interior painted, solid interior mirror polish stainless steel, thermal glass divider or glass ends.
- Remote glycol or CO<sub>2</sub> refrigeration package.
- Self-contained refrigeration package.
- Clear or solid lower storage doors.

### Base Model Features

- Sled runner base construction.
- Standard 33-3/8"H Base (34") with 6-5/16" base height.
- Standard 51" case depth.
- Standard 20-1/4" case dome.
- Painted metal exterior.
- Stainless steel exterior and base trim.
- Stainless steel outside back and dome top.

### Hot Dome

- Single-pane, regular-glare flat lift front glass.
- Stainless steel interior.
- Stainless steel hot well with divider bars for full size 2-1/2"D pan display (pans not included).
- Low wattage, long wave radiant heat system.
- Electronically controlled zone heating.

### Refrigerated Base

- 3-1/2" polished dieboard plex.
- Black painted metal interior.
- (1)row each 10" adjustable angle painted metal shelving.
- Clearvoyant® LED cornice light.
- Rear electrical raceway.
- Remote DX refrigeration package.



Dover Food Retail  
Conyers, GA USA  
844.591.5937  
hillphoenix.com

©2018 Hillphoenix, Inc.

**Hillphoenix**  
a DOVER company