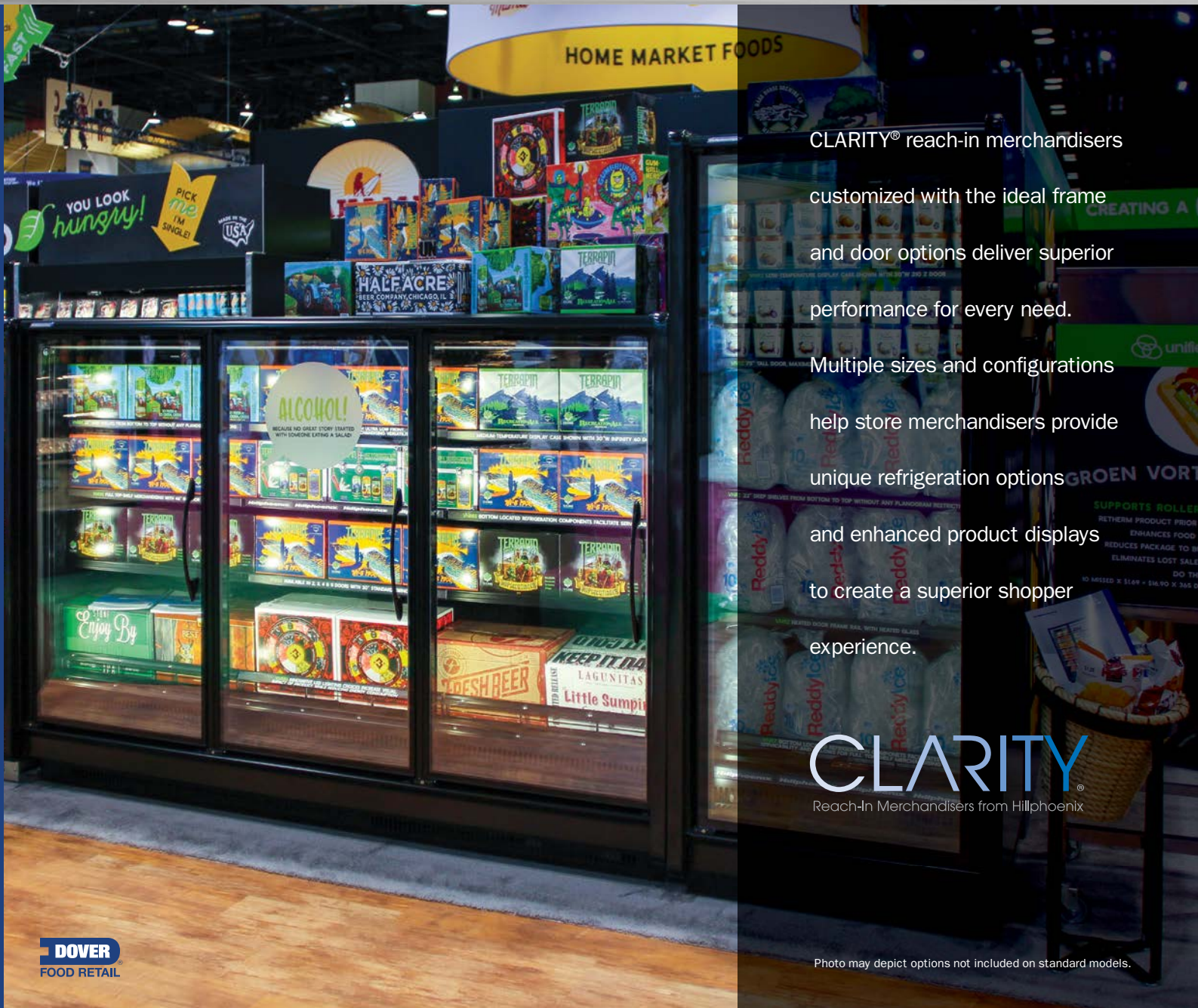


# Short Glass Door Reach-In

Medium temperature merchandiser for dairy, deli, bakery, meat and beverage.



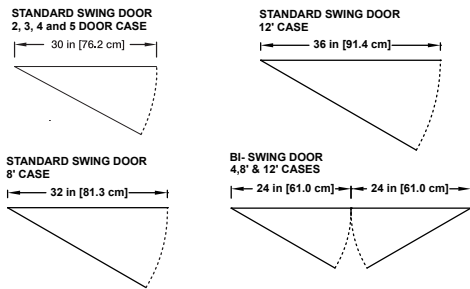
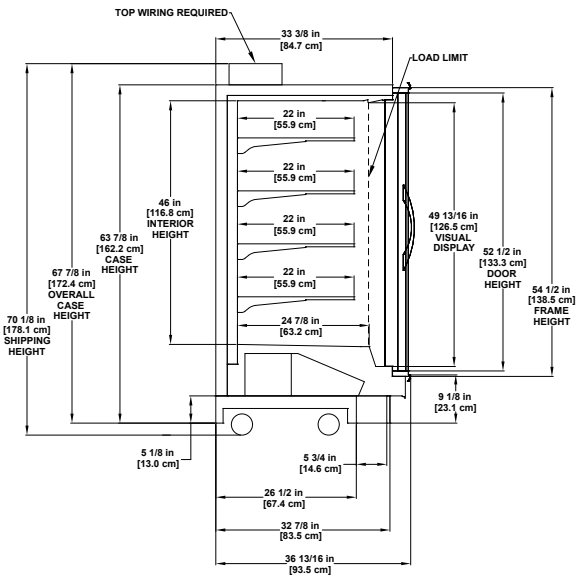
CLARITY® reach-in merchandisers

customized with the ideal frame  
and door options deliver superior  
performance for every need.

Multiple sizes and configurations  
help store merchandisers provide  
unique refrigeration options  
and enhanced product displays  
to create a superior shopper  
experience.

**CLARITY**  
Reach-In Merchandisers from Hillphoenix

VNRBS



**Door Options**

Consult Hillphoenix Engineering Reference Manual for more available options.

Casters add 2 1/4" to shipping height.

**Base Model Features**

- 54" tall door, coupled with 8" ultra-low front, maximizes product visibility and merchandising versatility.
- Allows for customers to see over the top of the case for front end merchandising or dry product promotion on top.
- 46" interior front facings enhance planogram design options with added flexibility and versatility. With no restrictions in the interior due to refrigeration components being located in the tank below the deck pan, planograms are easier to design allowing for product to take center stage.
- Bottom-located refrigeration components facilitate serviceability and allow for full top shelf merchandising.
- Modular interior component design allows easy access to the coil, fans and drain for ease of maintenance.
- Proprietary Synerg-E® technology with NRGcoil™ and energy efficient fan motors ensure uniform case performance and lower average product temperatures with optimum energy efficiency.
- Innovative Anthony® Optimax LED lighting choices increase visual impact of product while reducing energy consumption.
- Shelving - 22".
- Removable casters for easy merchandiser unloading and movement during installation.

**Available Options**

- 3 & 4 door with 30" standard swing doors.
- Variety of door rail profiles, finishes and handles.
- Anthony® 101 door frame with Infinity® 90 or ELM-D doors.
- Anthony Vista® door frame with Vista C or Infinity 60 bi-swing doors.
- Available door colors: silver satin, polished aluminum, black, gray or glass infinity edge.
- Zero energy doors.
- Shelving - 24".
- Motion sensors for additional energy savings.
- Timed-off defrost.
- Polymer or metal end trim.

Please consult Hillphoenix Engineering Reference Manual for dimensions, plan views and technical specifications. Specifications subject to change without notice. Designed for optional performance in store environments where temperature and humidity do not exceed 75° F and 55% R.H. Certified to UL 471 and ANSI/NSF Standard 7.



Dover Food Retail  
Conyers, GA USA  
844.591.5937  
hillphoenix.com



©2019 Hillphoenix, Inc.