

SHIPPING WEIGHT	
Case	Weight
OWZ	---



COMPONENT

ALL MEASUREMENTS ARE TAKEN PER ASHRAE-72-2005 SPECIFICATIONS. HILLPHOENIX REFRIGERATED DISPLAY CASES FOR SALE IN THE UNITED STATES MEET OR EXCEED DEPARTMENT OF ENERGY 2017 REQUIREMENTS.

OWZ

Rev Date:	Rev #	Revision Description:
5/9/2018	2	NEW STANDARDS
12/1/2017	1	DOE 2017

ELECTRICAL DATA											
Case Length	Fans Per Case	High Efficiency Fans				Glass Heater		Defrost Heaters			
		Open Case		Sliding Doors		120 Volts		208 Volts		240 Volts	
		120 Volts		120 Volts		Amps	Watts	Amps	Watts	Amps	Watts
		Amps	Watts	Amps	Watts						
8'	2	0.30	22.0	0.19	16.0	0.70	84.4	7.69	1600	8.87	2130
12'	3	0.45	33.0	0.28	24.0	1.06	126.6	11.54	2400	13.31	3195

GUIDELINES AND CONTROL SETTINGS							
Application	Case Type	BTUH/ft		Superheat Set Point @ Bulb (°F)	Evaporator (F)	Discharge Air (°F)	Discharge Air Velocity (FPM)
		Conventional	Parallel				
Frozen Food	Open	342	310	3 - 5	-22	-10	255
Medium Temp	Open	256	245	6 - 8	20	27	255

DEFROST CONTROLS							
Application	Case Type	Defrost Per Day	Run-Off Time (Min)	Electric Defrost		Hot Gas Defrost	
				Fail-Safe (Min)	Termination Temp (°F)	Fail-Safe (Min)	Termination Temp (°F)
Frozen Food	Open	3	5	50	45	20	60
Medium Temp	Open	2	5	35	47	20	60

NOTES:

- "---" indicates that the feature is not an option with this model.
- Listed discharge air velocity represents the average velocity at the peak of defrost.
- Temperature and defrost settings listed above are recommended start-up settings. Final operational settings may need to be adjusted for the store conditions in which the case operates.
- The recommended evaporator temperatures may need to be adjusted based on system setup, store conditions, etc. The minimum recommended evaporator temperature is 4°F below the listed evaporator temperature.
- Electric defrost is recommended for low temperature applications.

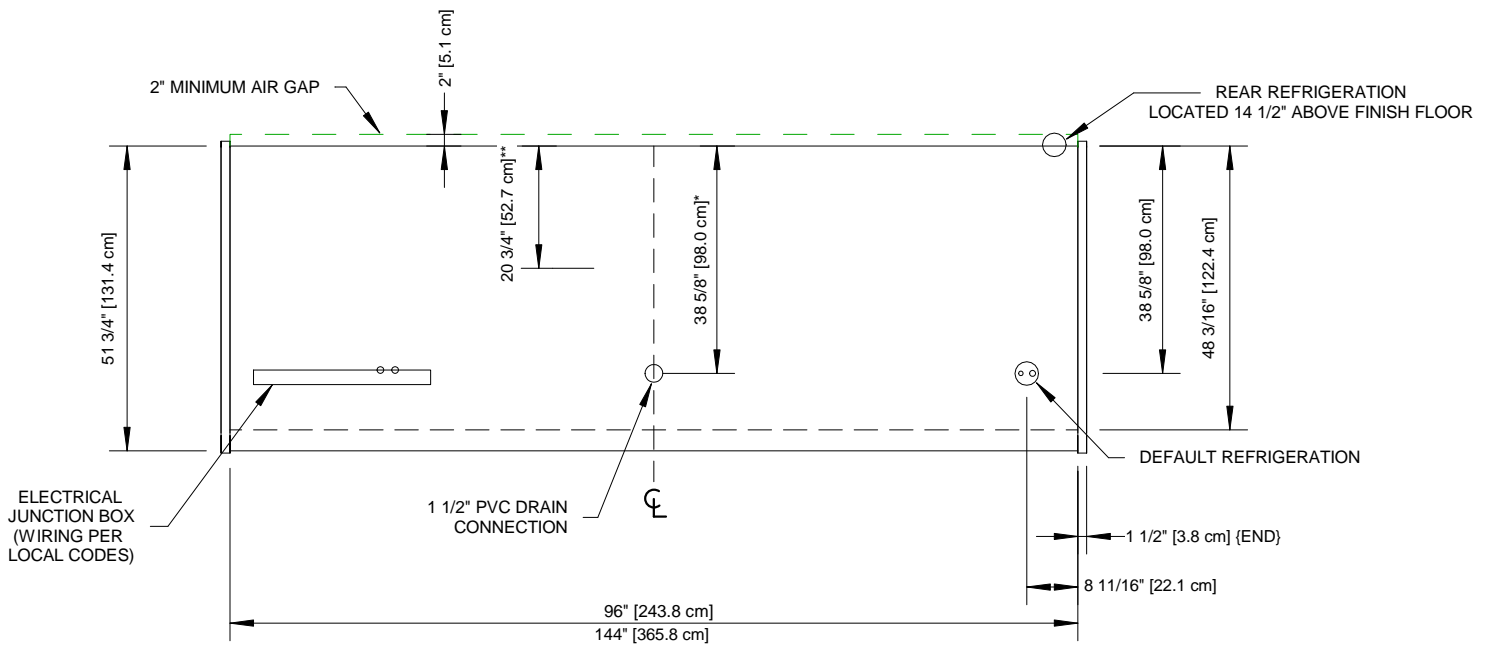
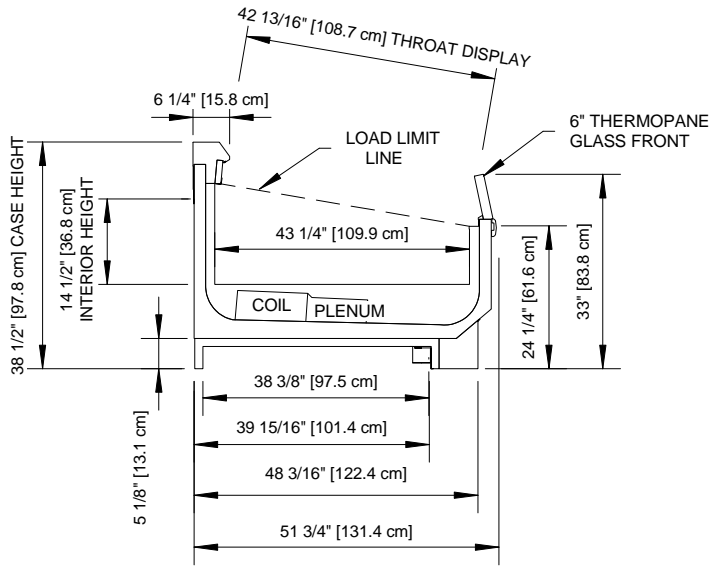


OWZ

ALL MEASUREMENTS ARE TAKEN PER ASHRAE-72-2005 SPECIFICATIONS. HILLPHOENIX REFRIGERATED DISPLAY CASES FOR SALE IN THE UNITED STATES MEET OR EXCEED DEPARTMENT OF ENERGY 2017 REQUIREMENTS.

Rev Date:	Rev #	Revision Description:
5/9/2018	2	NEW STANDARDS
12/1/2017	1	DOE 2017





NOTES:

- * : STUB-UP AREA
- ** : RECOMMENDED STUB-UP CENTERLINE FOR ELECTRICAL AND HUB DRAINS
- : AVAILABLE SHELF SIZES: 16" & 20"

- Ends add approximately 1" to case height, 1" to the front and 1/2" to the back



OWZ

ALL MEASUREMENTS ARE TAKEN PER ASHRAE-72-2005 SPECIFICATIONS. HILLPHOENIX REFRIGERATED DISPLAY CASES FOR SALE IN THE UNITED STATES MEET OR EXCEED DEPARTMENT OF ENERGY 2017 REQUIREMENTS.

Rev Date:	Rev #	Revision Description:
5/9/2018	2	NEW STANDARDS
12/1/2017	1	DOE 2017

