

SHIPPING WEIGHT	
Case	Weight
UPA	---



COMPONENT

ALL MEASUREMENTS ARE TAKEN PER ASHRAE-72-2005 SPECIFICATIONS. HILLPHOENIX REFRIGERATED DISPLAY CASES FOR SALE IN THE UNITED STATES MEET OR EXCEED DEPARTMENT OF ENERGY 2017 REQUIREMENTS.

UPA

Rev Date:	Rev #	Revision Description:
5/9/2018	2	NEW STANDARDS
12/1/2017	1	DOE 2017

SYSTEM REQUIREMENTS				
Volts	Phase	Frequency (Hz)	Plug Style	Cord Length
120	1	60	NEMA L5-30	10'

GUIDELINES AND CONTROL SETTINGS				
24hr Energy Usage (kWh)	Suction Pressure @ Case Outlet (psig)	Superheat Set Point @ Bulb (°F)	Discharge Air (°F)	Discharge Air Velocity (FPM)
25.0	12 - 14	3-4	32	220

CONDENSING UNIT DATA							
Volts	Phase	Frequency (Hz)	Horsepower	Running Load Amps (RLA) Amps	Locked Rotor Amps (LRA) Amps	Refrigerant	Lbs. of Refrigerant
120	1	60	3/4	10.9	85.5	R404A	3.75

DEFROST CONTROLS		
Defrost Per Day	Timed-Off Defrost	
	Fail-Safe (Min)	Termination Temp
4	45	47

NOTES:

- "---" indicates that the feature is not an option with this case model.
- Listed discharge air velocity represents the average velocity at the peak of defrost.
- Temperature and defrost settings listed above are recommended start-up settings. Final operational settings may need to be adjusted for the store conditions in which the case operates.
- The recommended evaporator temperatures may need to be adjusted based on system setup, store conditions, etc. The minimum recommended evaporator temperature is 4°F below the listed evaporator temperature.
- Timed off defrost is recommended for medium temperature applications.

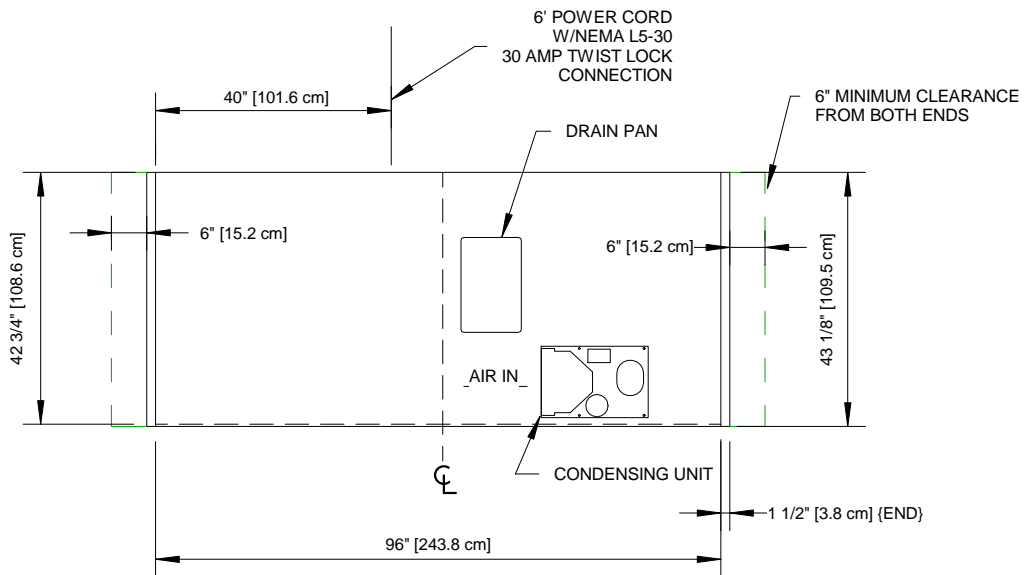
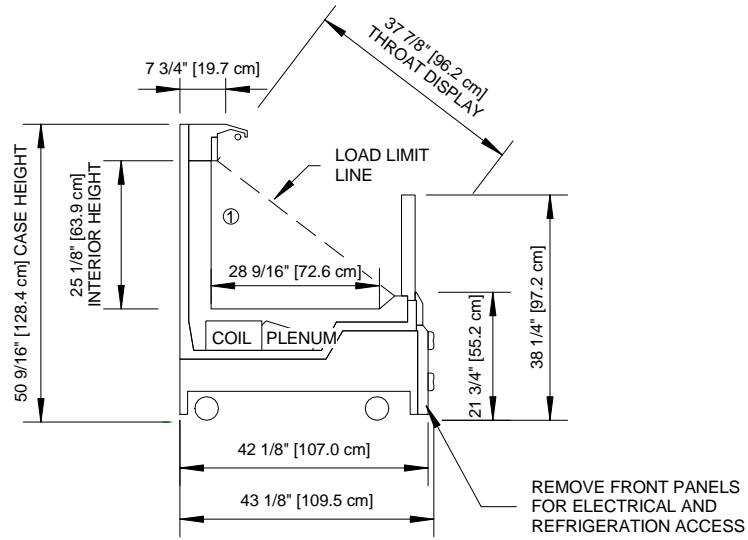


UPA

ALL MEASUREMENTS ARE TAKEN PER ASHRAE-72-2005 SPECIFICATIONS. HILLPHOENIX REFRIGERATED DISPLAY CASES FOR SALE IN THE UNITED STATES MEET OR EXCEED DEPARTMENT OF ENERGY 2017 REQUIREMENTS.

Rev Date:	Rev #	Revision Description:
5/9/2018	2	NEW STANDARDS
12/1/2017	1	DOE 2017





NOTES:

① :AVAILABLE SHELF SIZES: 10", 12", 14", & 16"

- Ends add approximately 1" to case height, 1" to the front and 1/2" to the back



COMPONENT

ALL MEASUREMENTS ARE TAKEN PER ASHRAE-72-2005 SPECIFICATIONS. HILLPHOENIX REFRIGERATED DISPLAY CASES FOR SALE IN THE UNITED STATES MEET OR EXCEED DEPARTMENT OF ENERGY 2017 REQUIREMENTS.

UPA

Rev Date:	Rev #	Revision Description:
5/9/2018	2	NEW STANDARDS
12/1/2017	1	DOE 2017