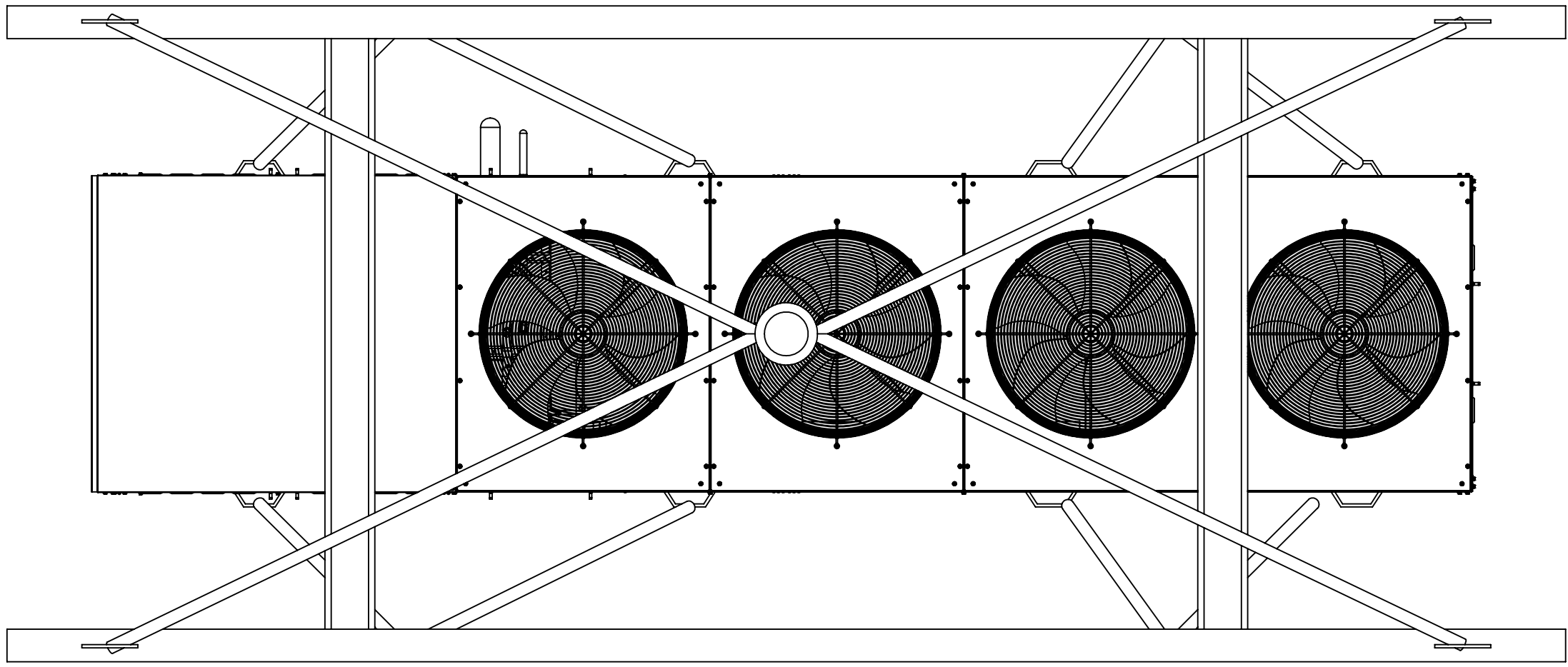
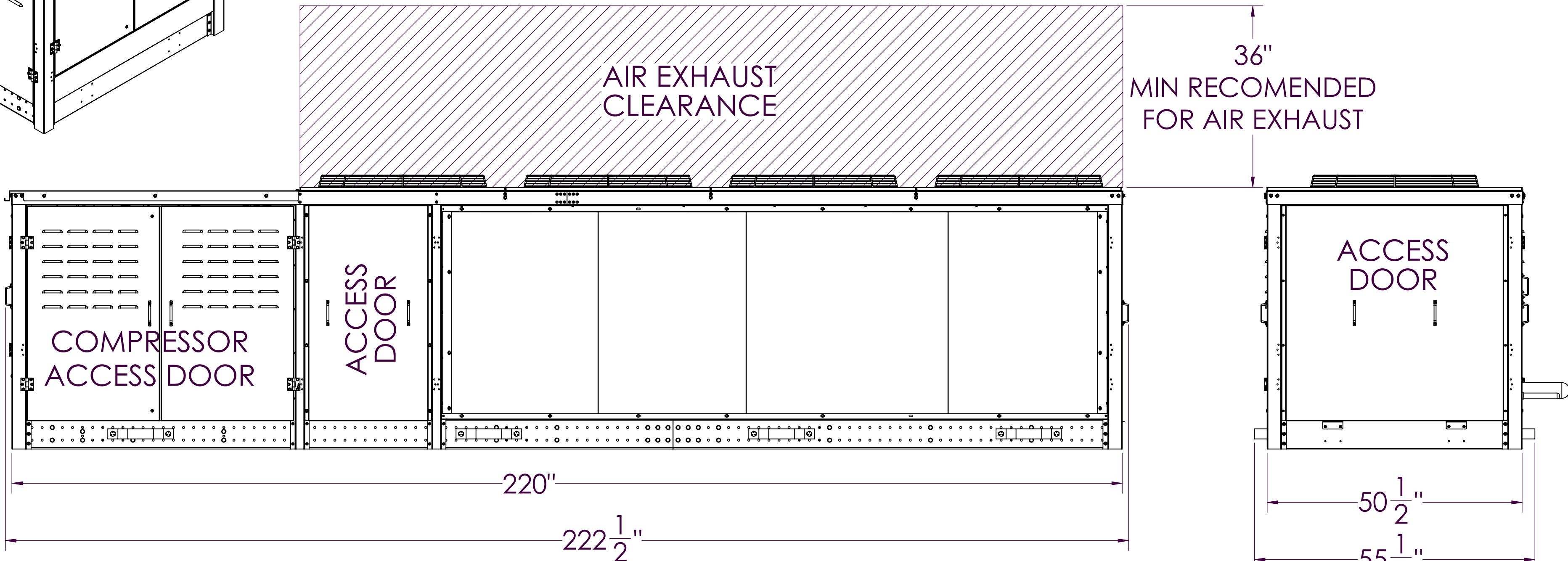
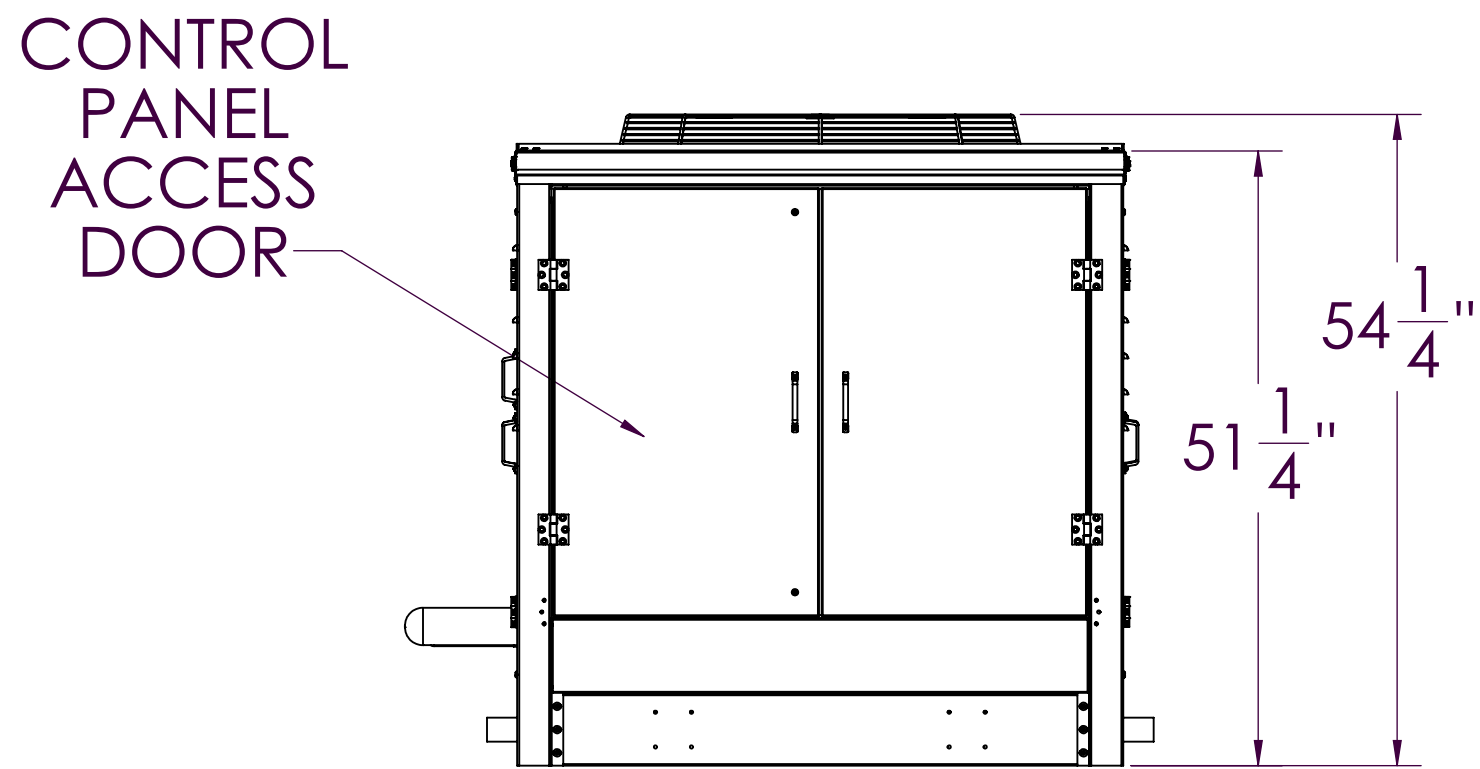
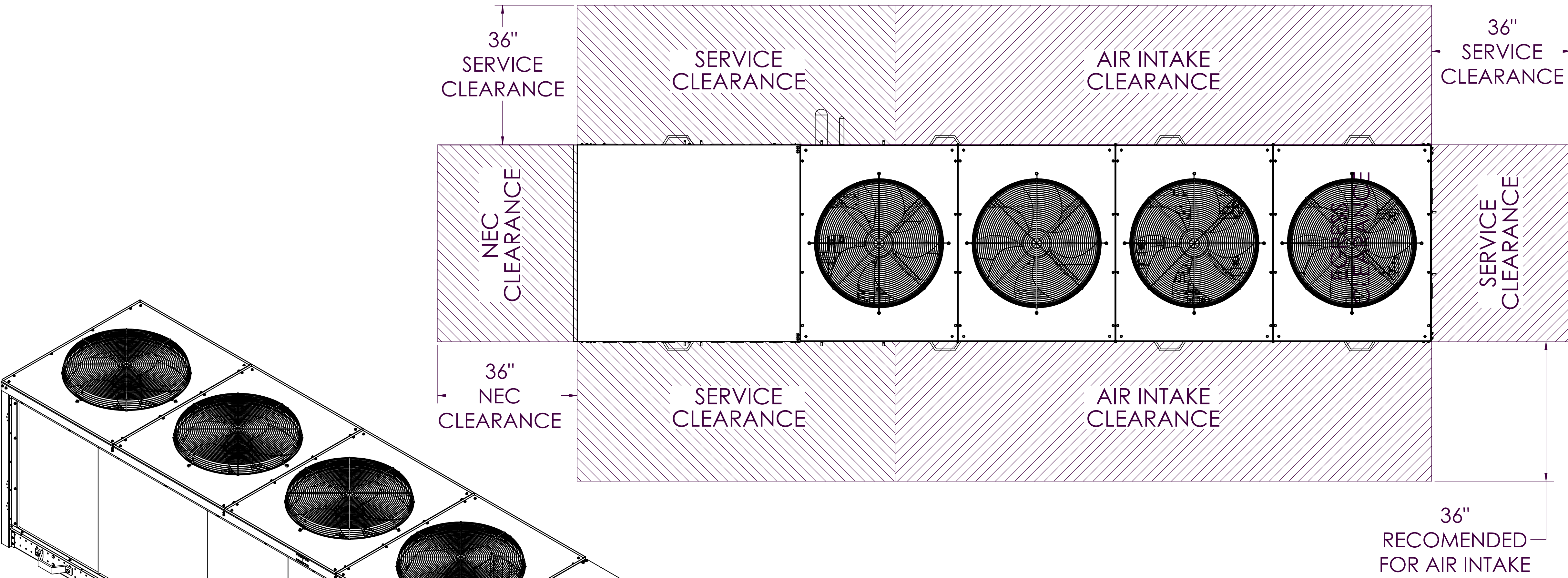
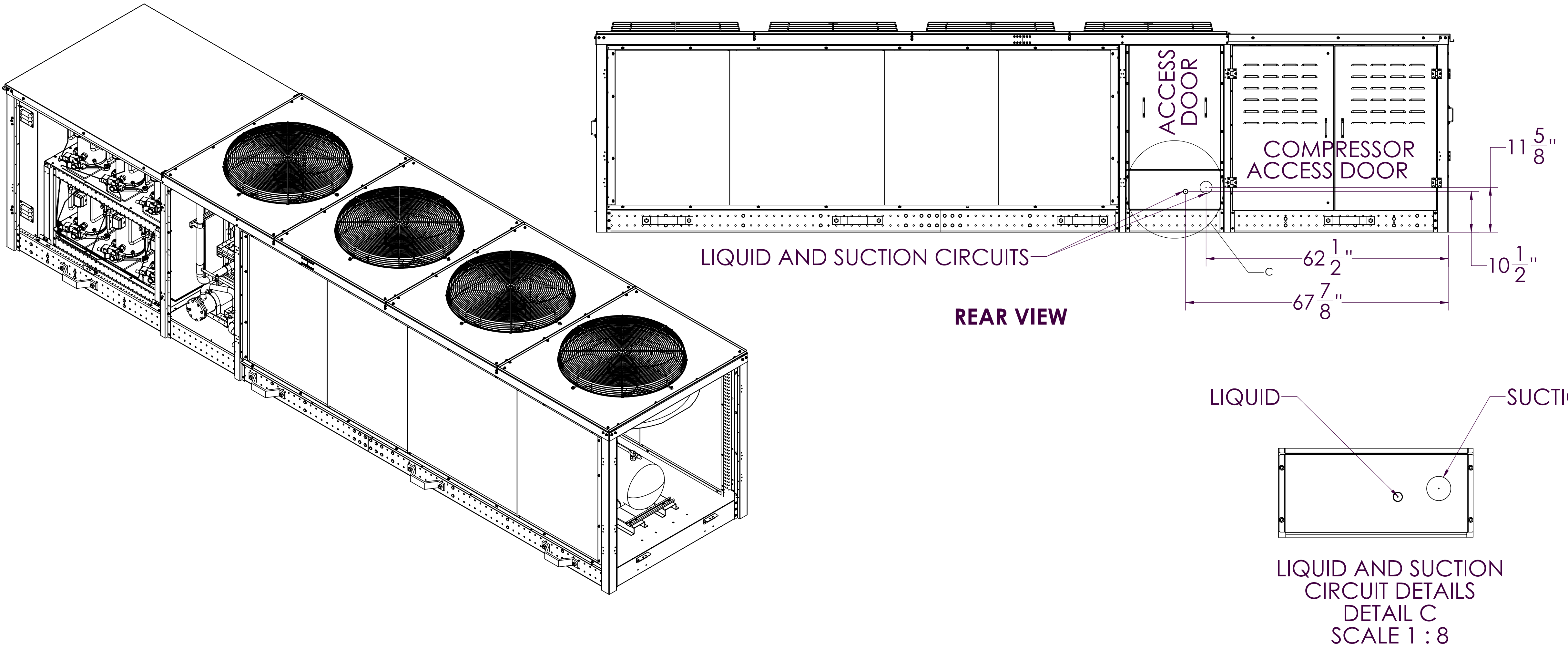


ACCESS DOORS REMOVED FOR CLARITY

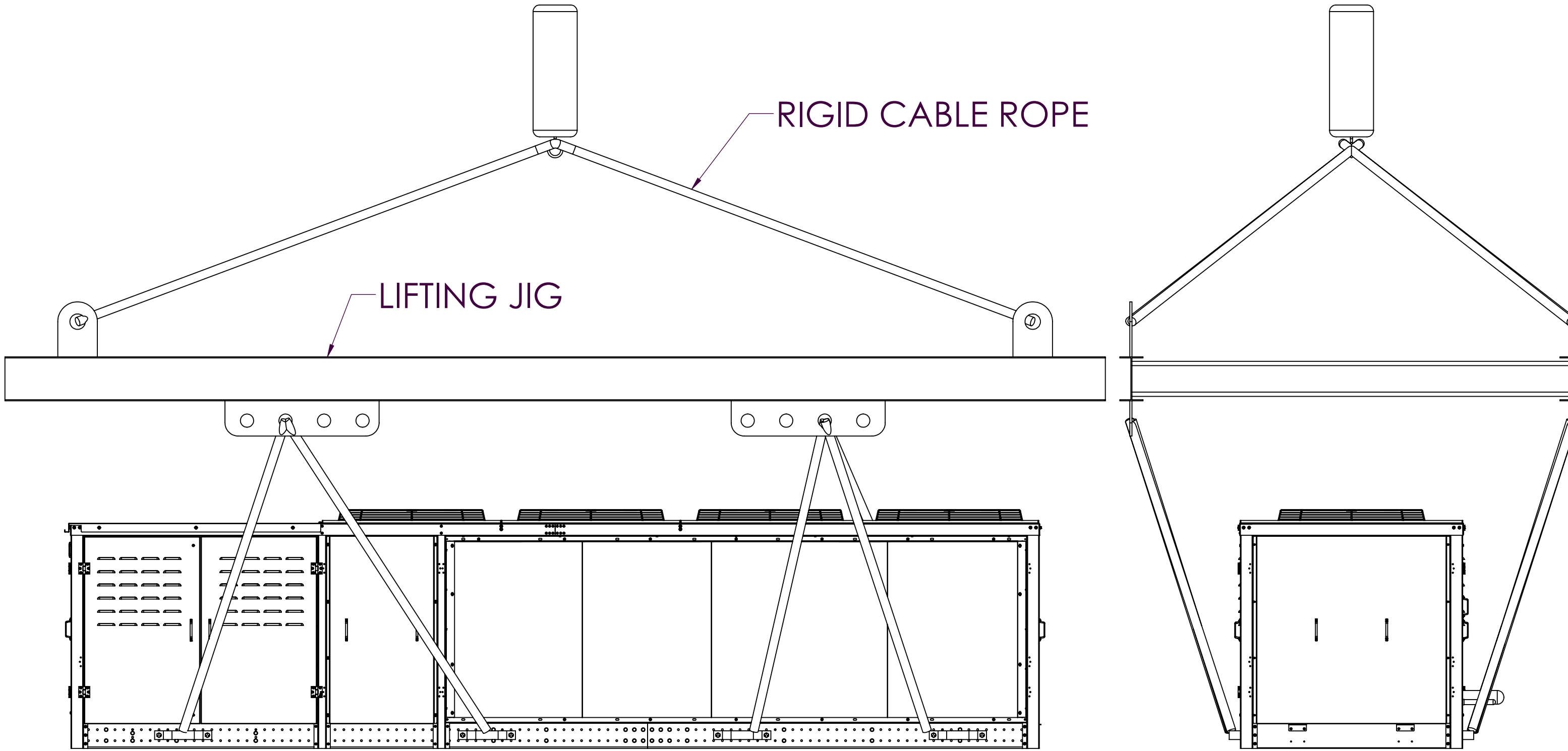
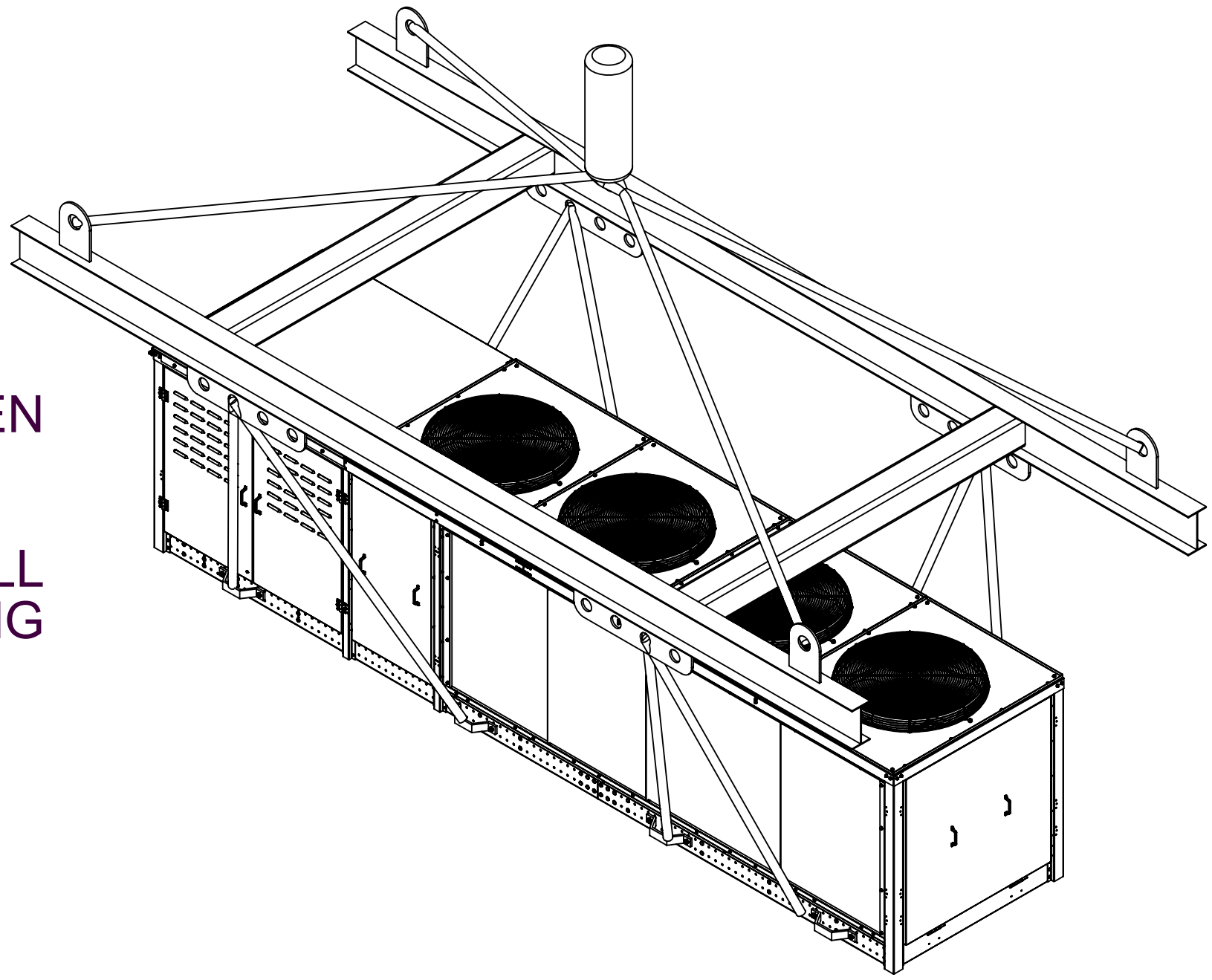


LIFTING DETAILS:

CABLES NEED TO BE ADJUSTED, TO TO ENSURE THE UNIT IS LEVEL WHEN LIFTED.

NON LEVEL UNITS WHEN RIGGID WILL PLACE TOO MUCH STRESS IN LIFTING POINTS AND BASE FRAME WHICH RESULT IN FAILURE

USE ALL LIFTING POINTS



LIFTING DIAGRAM

MODEL	WEIGHT (LBS)	SUCTION LOOP		LIQUID LOOP		MCA @208V	MOPD @208V
		LT	MT	LT	MT		
ADP-M0403-L0000	4000	N/A	3-1/8	N/A	1-1/8	232.0	250.0
ADP-M0442-L0000	4000	N/A	3-1/8	N/A	1-1/8	240.0	250.0

- NOTE:
- ADAPTAPAK UNIT FLOOR IS NOT DESIGNED TO BE WEATHER TIGHT AND IS RECOMMENDED TO SIT ON STEEL DUNNAGE ABOVE THE FINISHED ROOF
 - REFRIGERATION STUBS ARE ONLY AVAILABLE AS SIDE ACCESS AS SHOWN

REVISION RECORD			ALL TOLERANCES UNLESS OTHERWISE SPECIFIED		P/N: AS00079779-SUBMITTAL	
REV	DATE	BY	DESCRIPTION	ALL BENDS 90°	ASSY MAN-SUBMITTAL APX	DATE
1				DEGREES ± 1°		18AUG2018
2				ALL FRACTIONAL DIM - 1/32		
3				3 DECIMALS ± .010		
4				2 DECIMALS ± .03		
5				THIRD ANGLE PROJECTION		
6				DO NOT SCALE DRAWING		
			CAD FILE NAME: AS00079779-SUBMITTAL	Hillphoenix		1 of 1
			SYSTEMS - REFRIGERATION		THIS DOCUMENT CONTAINS INFORMATION WHICH HILL PHOENIX CONSIDERS TO BE CONFIDENTIAL OR PROPRIETARY. ALL RIGHTS ARE RESERVED UNLESS OTHERWISE STATED HEREIN.	