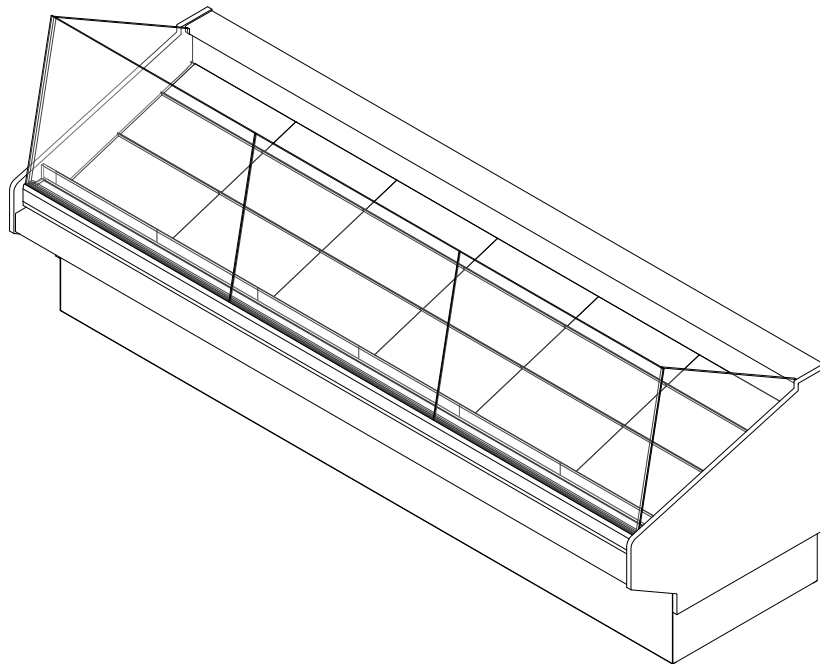


GENERAL NOTES:

- "----" Indicates that the feature is not an option on this case model and/or the data is not yet available at this time.
- 15 15/16" toekick height with 43" profile (optional)



SHIPPING WEIGHT	
Case	Weight
BSD-SW-R	---



ENGINEERED FOR STORES WITH AMBIENT CONDITIONS NOT TO EXCEED 75° AND 55% RELATIVE HUMIDITY. DUE TO ENGINEERING IMPROVEMENTS SPECIFICATIONS MAY CHANGE WITHOUT NOTICE. ALL MEASUREMENTS ARE TAKEN PER ASHRAE-72-2005 SPECIFICATIONS. HILLPHOENIX REFRIGERATED DISPLAY CASES FOR SALE IN THE UNITED STATES MEET OR EXCEED DEPARTMENT OF ENERGY 2017 REQUIREMENTS. NUMBERS ARE BASED ON STANDARD CASE SIZES. CONSULT ENGINEERING.

BSD-SW-R

Rev. Date	Rev. #	Rev. Title
10-01-20	3	ENDVIEW UPDATE
09-29-20	2	ENDVIEW UPDATE



ELECTRICAL DATA

Case Length	Fans Per Case	High Efficiency Fans		Anti-Condensate Fans		Drain Heaters		Optional Defrost Heaters	
		120 Volts		120 Volts		120 Volts		208 Volts	
		Amps	Watts	Amps	Watts	Amps	Watts	Amps	Watts
4'	1	0.30	36	---	---	---	---	---	---
6'	2	0.60	72	---	---	---	---	---	---
8'	2	0.60	72	---	---	---	---	---	---
10'	3	0.90	108	---	---	---	---	---	---
12'	4/*3	1.20/0.90	144/108	---	---	---	---	---	---

LIGHTING DATA

Case Length	Lights Per Row	Light Length	Clearvoyant 4 LED Lighting (Per Light Row)			
			Standard Power (Cornice or Shelf)		High Power (Cornice)	
			120 Volts		120 Volts	
			Amps	Watts	Amps	Watts
4'	---	---	---	---	---	---
6'	---	---	---	---	---	---
8'	---	---	---	---	---	---
10'	---	---	---	---	---	---
12'	---	---	---	---	---	---

GUIDELINES AND CONTROL SETTINGS (DX)

	BTUH/ft		Superheat Set Point @ Bulb (°F)	Evaporator (°F)	Discharge Air (°F)	Discharge Air Velocity (FPM)
	Conventional	Parallel				
DX (Ice)	135	123	10	24	29	115

GUIDELINES AND CONTROL SETTINGS (GLYCOL)

GUIDELINES AND CONTROL SETTINGS (GLYCOL)				
BTUH/ft	Glycol			Coil Volume (gal)
	Supply Temp (°F)		Flow Rate (GPM/ft)	
	20°	25°		
135	---	---	0.0675	0.26

NOTES:

- "—" Indicates that the feature is not an option on this case model and/or the data is not yet available at this time.
- * Fans required in an inlet/outlet case design.
- Listed discharge air velocity represents the average velocity at the peak of defrost.
- Glycol supply of 20°F is for a propylene glycol mixture of 35% concentration by weight.
- Glycol supply of 25°F is for a propylene glycol mixture of 30% concentration by weight.
- ** Time-off duration for defrost with no termination control.



ENGINEERED FOR STORES WITH AMBIENT CONDITIONS NOT TO EXCEED 75° AND 55% RELATIVE HUMIDITY. DUE TO ENGINEERING IMPROVEMENTS SPECIFICATIONS MAY CHANGE WITHOUT NOTICE. ALL MEASUREMENTS ARE TAKEN PER ASHRAE-72-2005 SPECIFICATIONS. HILLPHOENIX REFRIGERATED DISPLAY CASES FOR SALE IN THE UNITED STATES MEET OR EXCEED DEPARTMENT OF ENERGY 2017 REQUIREMENTS. NUMBERS ARE BASED ON STANDARD CASE SIZES. CONSULT ENGINEERING.

BSD-SW-R

Rev. Date	Rev. #	Rev. Title
10-01-20	3	ENDVIEW UPDATE
09-29-20	2	ENDVIEW UPDATE



BSD-SW-R

Service Single-Deck Open Back Merchandiser w/ Flat Swing-Out Glass
4', 6', 8', 10' & 12' (Seafood)

DEFROST CONTROLS								
	Defrosts Per Day	Run-Off Time (Min)	Electric Defrost		Timed-Off Defrost		Hot Gas Defrost	
			Fail-Safe (Min)	Termination Temp (°F)	Fail-Safe (Min)	Termination Temp (°F)	Fail-Safe (Min)	Termination Temp (°F)
DX (Ice)	2	---	---	---	75/**60	42	---	---
Glycol	2	---	---	---	90	45	---	---



ENGINEERED FOR STORES WITH AMBIENT CONDITIONS NOT TO EXCEED 75° AND 55% RELATIVE HUMIDITY. DUE TO ENGINEERING IMPROVEMENTS SPECIFICATIONS MAY CHANGE WITHOUT NOTICE. ALL MEASUREMENTS ARE TAKEN PER ASHRAE-72-2005 SPECIFICATIONS. HILLPHOENIX REFRIGERATED DISPLAY CASES FOR SALE IN THE UNITED STATES MEET OR EXCEED DEPARTMENT OF ENERGY 2017 REQUIREMENTS. NUMBERS ARE BASED ON STANDARD CASE SIZES. CONSULT ENGINEERING.

BSD-SW-R

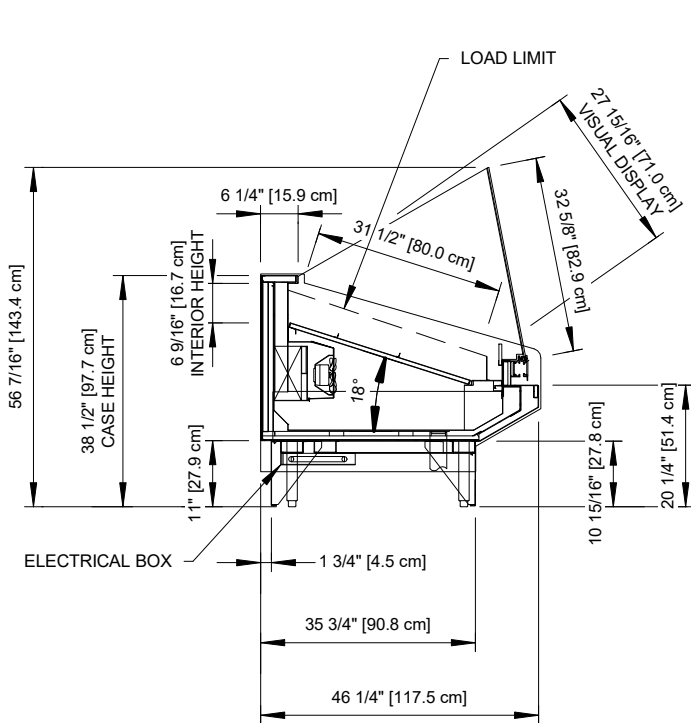
Rev. Date	Rev. #	Rev. Title
10-01-20	3	ENDVIEW UPDATE
09-29-20	2	ENDVIEW UPDATE

Clearvoyant™
LED SYSTEM

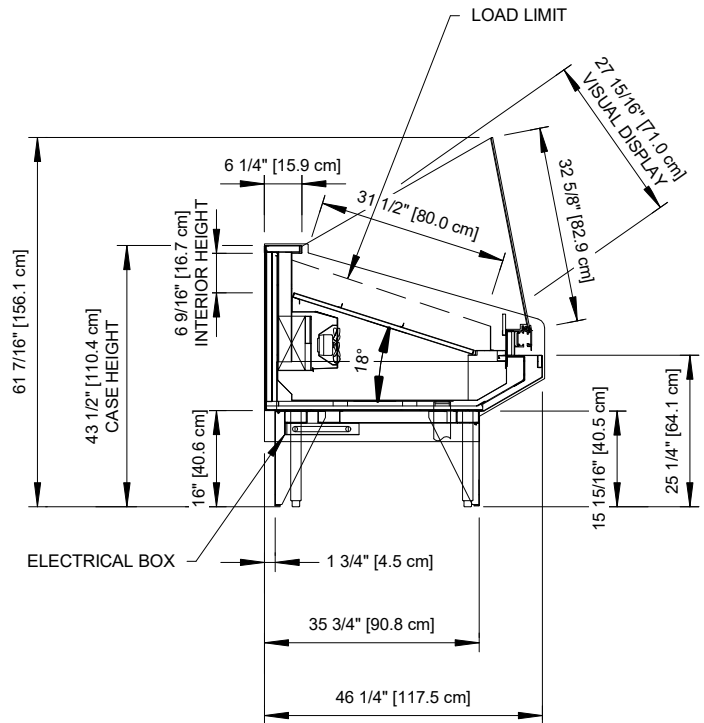
Hillphoenix
a DOVER company

BSD-SW-R

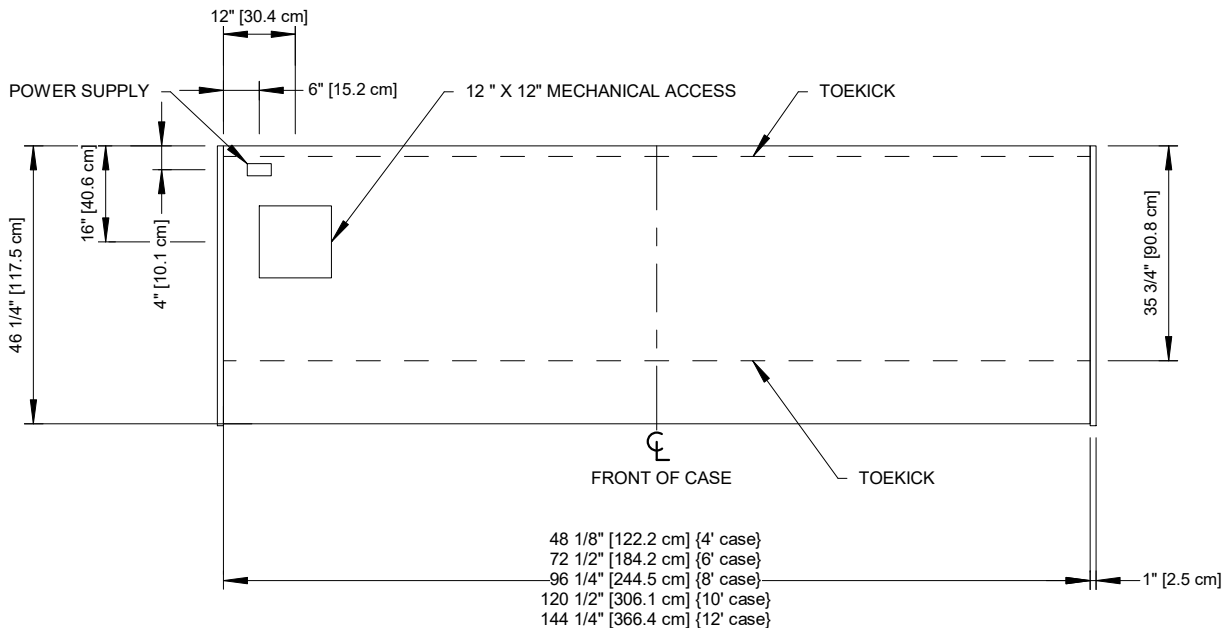
Service Single-Deck Open Back Merchandiser w/ Flat Swing-Out Glass
4', 6', 8', 10' & 12' (Seafood)



38\"



43\"



ENGINEERED FOR STORES WITH AMBIENT CONDITIONS NOT TO EXCEED 75° AND 55% RELATIVE HUMIDITY. DUE TO ENGINEERING IMPROVEMENTS SPECIFICATIONS MAY CHANGE WITHOUT NOTICE. ALL MEASUREMENTS ARE TAKEN PER ASHRAE-72-2005 SPECIFICATIONS. HILLPHOENIX REFRIGERATED DISPLAY CASES FOR SALE IN THE UNITED STATES MEET OR EXCEED DEPARTMENT OF ENERGY 2017 REQUIREMENTS. NUMBERS ARE BASED ON STANDARD CASE SIZES. CONSULT ENGINEERING.

BSD-SW-R

Rev. Date	Rev. #	Rev. Title
10-01-20	3	ENDVIEW UPDATE
09-29-20	2	ENDVIEW UPDATE

