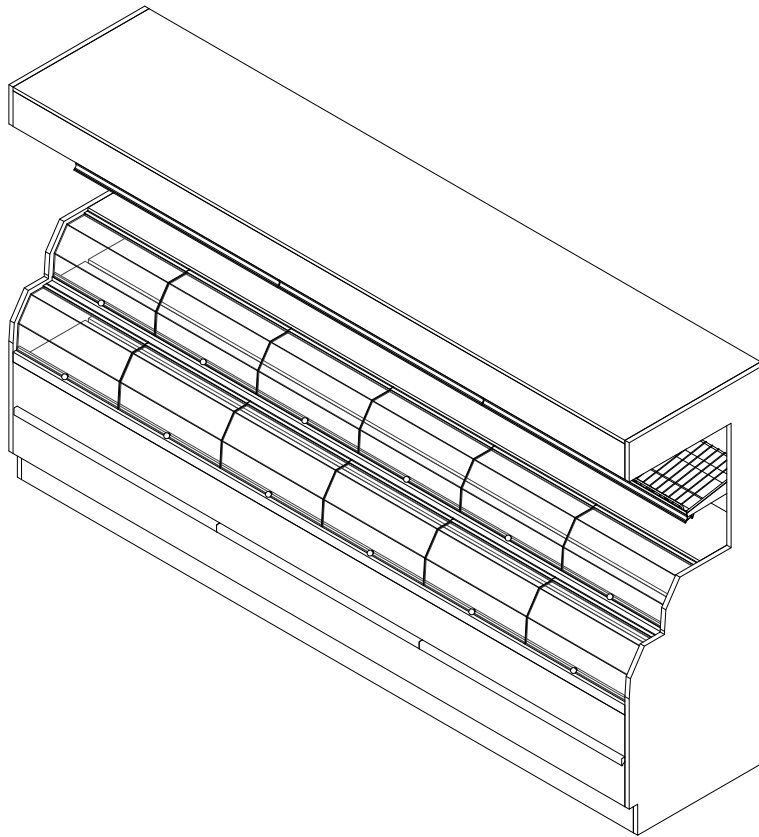


GENERAL NOTES:

- "---" Indicates that the feature is not an option on this case model and/or the data is not yet available at this time.



SHIPPING WEIGHT

| Case | Weight |
|--------|--------|
| BWS-RB | --- |



ENGINEERED FOR STORES WITH AMBIENT CONDITIONS NOT TO EXCEED 75° AND 55% RELATIVE HUMIDITY. DUE TO ENGINEERING IMPROVEMENTS SPECIFICATIONS MAY CHANGE WITHOUT NOTICE. ALL MEASUREMENTS ARE TAKEN PER ASHRAE-72-2005 SPECIFICATIONS. NUMBERS ARE BASED ON STANDARD CASE SIZES. CONSULT ENGINEERING.

BWS-RB

| Rev. Date | Rev. # | Rev. Title |
|-----------|--------|---------------|
| 04-28-21 | 1 | NEW STANDARDS |
| | | |



| LIGHTING DATA | | | | | | |
|---------------|----------------|--------------|---|-------|-------------------------|-------|
| Case Length | Lights Per Row | Light Length | Clearvoyant 4 LED Lighting (Per Light Row) | | | |
| | | | Standard Power (Cornice or Shelf) | | High Power (Cornice) | |
| | | | 120 Volts | | 120 Volts | |
| | | | Amps | Watts | Amps | Watts |
| 48" | 1 | 4' | 0.05 | 5.9 | 0.12 | 14.9 |
| 60" | 1 | 5' | 0.06 | 7.5 | 0.15 | 18.5 |
| 72" | 2 | 3' | 0.08 | 9.4 | 0.20 | 23.8 |
| 96" | 2 | 4' | 0.10 | 11.8 | 0.24 | 29.8 |
| 120" | 2 | 4' | 0.10 | 11.8 | 0.24 | 29.8 |
| 144" | 3 | 4' | 0.15 | 17.7 | 0.36 | 44.7 |

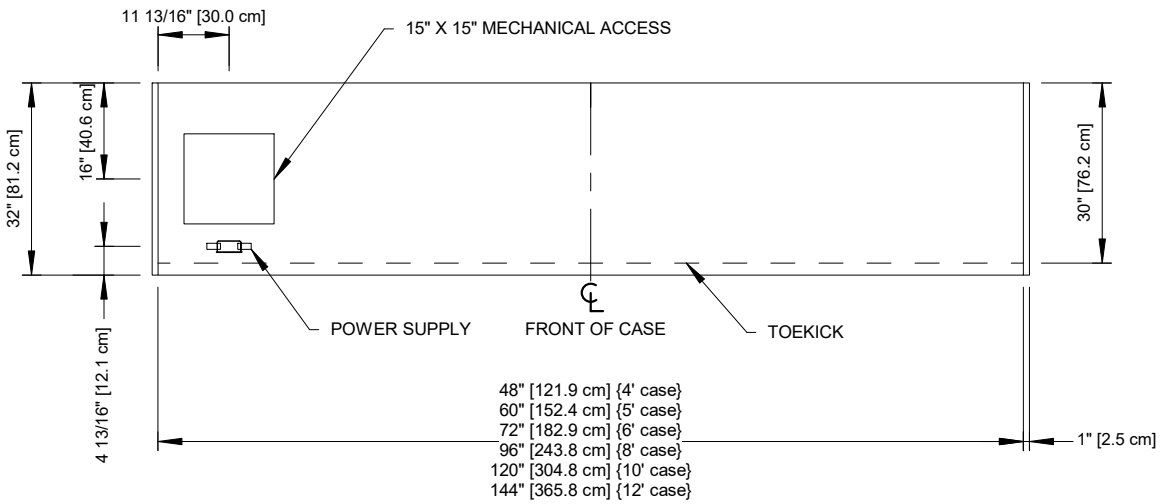
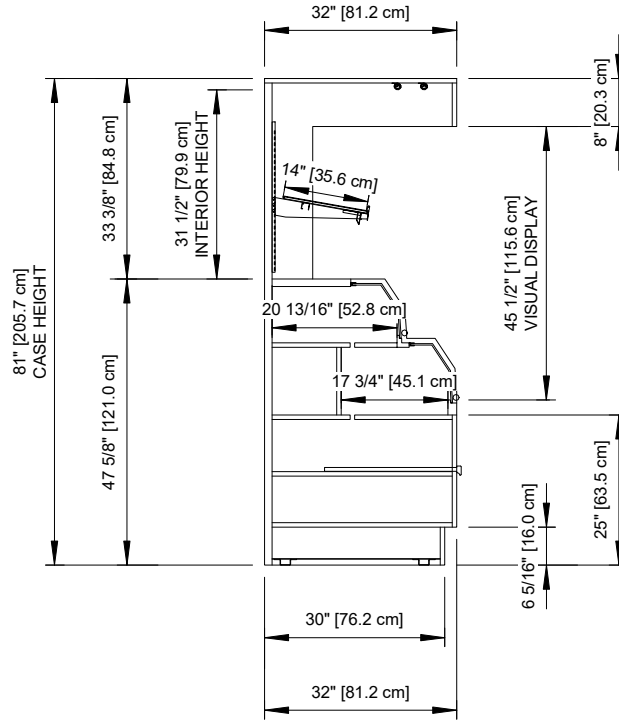


ENGINEERED FOR STORES WITH AMBIENT CONDITIONS NOT TO EXCEED 75° AND 55% RELATIVE HUMIDITY. DUE TO ENGINEERING IMPROVEMENTS SPECIFICATIONS MAY CHANGE WITHOUT NOTICE. ALL MEASUREMENTS ARE TAKEN PER ASHRAE-72-2005 SPECIFICATIONS. NUMBERS ARE BASED ON STANDARD CASE SIZES. CONSULT ENGINEERING.

BWS-RB

| Rev. Date | Rev. # | Rev. Title |
|-----------|--------|---------------|
| 04-28-21 | 1 | NEW STANDARDS |
| | | |





ENGINEERED FOR STORES WITH AMBIENT CONDITIONS NOT TO EXCEED 75° AND 55% RELATIVE HUMIDITY. DUE TO ENGINEERING IMPROVEMENTS SPECIFICATIONS MAY CHANGE WITHOUT NOTICE. ALL MEASUREMENTS ARE TAKEN PER ASHRAE-72-2005 SPECIFICATIONS. NUMBERS ARE BASED ON STANDARD CASE SIZES. CONSULT ENGINEERING.

BWS-RB

| Rev. Date | Rev. # | Rev. Title |
|-----------|--------|---------------|
| 04-28-21 | 1 | NEW STANDARDS |
| | | |



Hillphoenix

A DOVER COMPANY