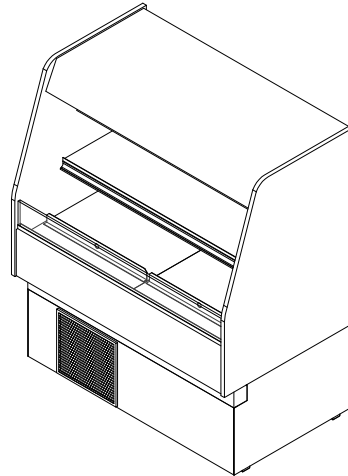




**GENERAL NOTES:**

- "---" Indicates that the feature is not an option on this case model and/or the data is not yet available at this time.



SHIPPING WEIGHT	
Case	Weight
CF-SC	---



**CF-SC**

Rev. Date	Rev. #	Rev. Title
12-03-20	1	NEW STANDARDS



ALL MEASUREMENTS ARE TAKEN PER ASHRAE-72-2005 SPECIFICATIONS. HILLPHOENIX REFRIGERATED DISPLAY CASES FOR SALE IN THE UNITED STATES MEET OR EXCEED DEPARTMENT OF ENERGY 2017 REQUIREMENTS.



SYSTEM REQUIREMENTS					
Case Length	Volts	Phase	Total Amps	Minimum Circuit Ampacity	Maximum Overcurrent Protection
2'	120	1	5.8	5.8	9.7
4'	120	1	20.77	11.9	20.3

SYSTEM REQUIREMENTS				
Case Length	Volts	Phase	Minimum Circuit Ampacity	Maximum Overcurrent Protection
2'	120/208	1	4.6	8.8
4'	120/208	1	10.5	18.9

ELECTRICAL DATA					
Case Length	Fans Per Case	High Efficiency Fans		Anit-Condensate Heaters	
		120 Volts		120 Volts	
		Amps	Watts	Amps	Watts
2'	1	0.30	25	.04	4.5
4'	2	0.60	25	.08	9.0

LIGHTING DATA						
Case Length	Lights Per Row	Light Length	Clearvoyant 4 LED Lighting (Per Light Row)			
			Standard Power (Cornice or Shelf)		High Power (Cornice)	
			120 Volts		120 Volts	
			Amps	Watts	Amps	Watts
2'	1	2'	0.02	1.9	0.03	3.8
4'	1	4'	0.05	5.9	0.12	14.9

GUIDELINES AND CONTROL SETTINGS			
Case Length	24hr Energy Usage (kWh/ft)	Discharge Air (°F)	Discharge Air Velocity (FPM)
2'	5.78	26	147
4'	10.98	26	161

**NOTES:**

- "—" Indicates that the feature is not an option on this case model and/or the data is not yet available at this time.
- Listed discharge air velocity represents the average velocity at the peak of defrost.
- RLA - Running Load Amps
- LRA - Locked Rotor Amps



**CF-SC**

ALL MEASUREMENTS ARE TAKEN PER ASHRAE-72-2005 SPECIFICATIONS. HILLPHOENIX REFRIGERATED DISPLAY CASES FOR SALE IN THE UNITED STATES MEET OR EXCEED DEPARTMENT OF ENERGY 2017 REQUIREMENTS.

Rev. Date	Rev. #	Rev. Title
12-03-20	1	NEW STANDARDS





CONDENSING UNIT DATA									
Case Length	Volts	Phase	HP	RLA (Amps)	LRA (Amps)	Refrig.	Grams	Condenser Fans	
								Amps	Watts
2'	120	1	---	3.9	25.1	R290	82	0.43	25
4'	120	1	---	8.4	41.5	R290	136	0.53	30

DEFROST CONTROLS								
Case Length	Defrosts Per Day	Run-Off Time (Min)	Electric Defrost		Timed-Off Defrost		Hot Gas Defrost	
			Fail-Safe (Min)	Termination Temp (°F)	Fail-Safe (Min)	Termination Temp (°F)	Fail-Safe (Min)	Termination Temp (°F)
2'	6	---	---	---	30	45	---	---
4'	6	---	---	---	30	45	---	---

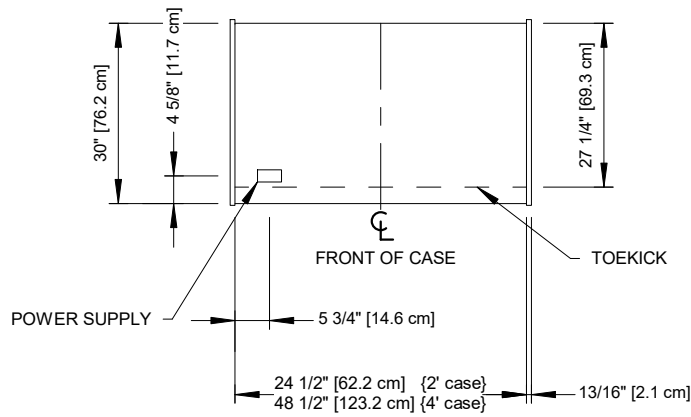
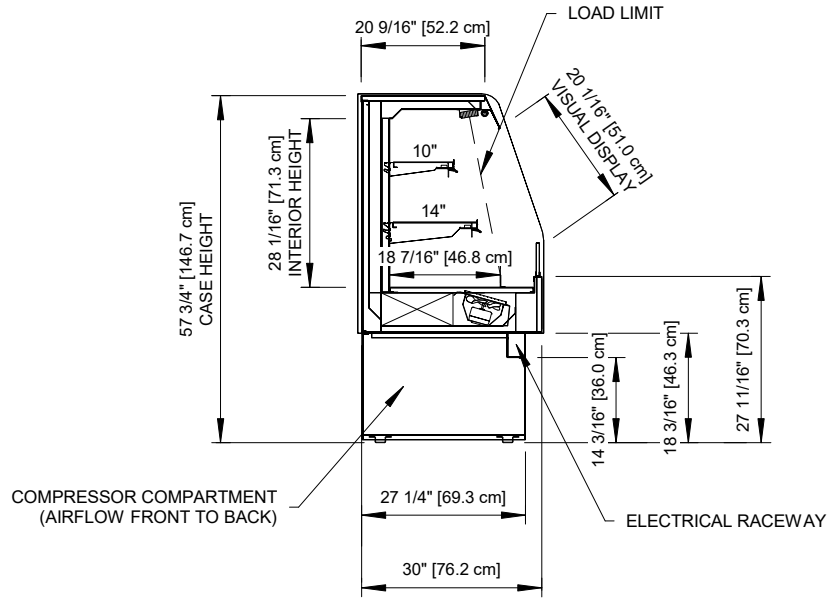


## CF-SC

ALL MEASUREMENTS ARE TAKEN PER ASHRAE-72-2005 SPECIFICATIONS. HILLPHOENIX REFRIGERATED DISPLAY CASES FOR SALE IN THE UNITED STATES MEET OR EXCEED DEPARTMENT OF ENERGY 2017 REQUIREMENTS.

Rev. Date	Rev. #	Rev. Title
12-03-20	1	NEW STANDARDS





## CF-SC

Rev. Date	Rev. #	Rev. Title
12-03-20	1	NEW STANDARDS



ALL MEASUREMENTS ARE TAKEN PER ASHRAE-72-2005 SPECIFICATIONS. HILLPHOENIX REFRIGERATED DISPLAY CASES FOR SALE IN THE UNITED STATES MEET OR EXCEED DEPARTMENT OF ENERGY 2017 REQUIREMENTS.