

**Hillphoenix**

Dover Food Retail  
2016 Gees Mill Road  
Conyers, GA 30013  
844.591.5937  
www.hillphoenix.com

©2021 Hillphoenix, Inc.

**Hillphoenix**

**The  
SFC  
Group**

*Solutions for  
convenience sake*



**CF-SC**

**Self-Service Multi-Deck**

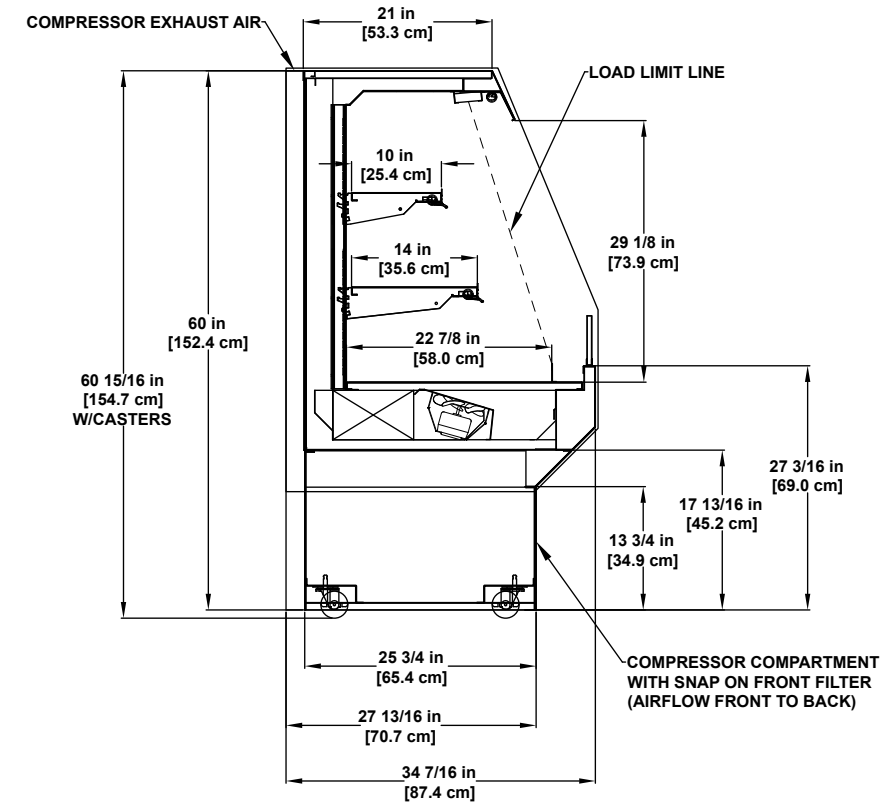
Medium temperature general merchandiser.

**DOVER**  
FOOD RETAIL

SFC-CF-SC\_v0921

**DOVER**  
FOOD RETAIL

## CF-SC Self-Service Multi-Deck



Please consult Hillphoenix Engineering Reference Manual for dimensions, plan views and technical specifications. Specifications are subject to change without notice. Certified to UL 471 and ANSI/NSF standard 7.

Designed for optimal performance in store environments where temperatures and humidity do not exceed 75°F and 55%R.H.

### Featured Laminates



### Base Model Features

- Closed base construction with leveling pads.
- Case dimensions: 60"H and 34-7/16"D.
- 17-3/16"H painted black metal base, front and sides.
- Painted metal exterior.
- Outside back and 20-9/16"D case top painted to match exterior.
- Stainless steel exterior trim.
- 5-1/2"H x 1/2" thick polished, straight die board plex.
- Painted Matte black metal interior and trim.
- (1) row Clearvoyant® LED canopy top light.
- (1) row each 10" and 14" non-lighted adjustable angled (0°, 5° and 15°) black painted metal shelving with black price tag molding with 3" polycarbonate product stop.
- Painted black metal, flat bottom deck with 2" metal product stop.
- Solid end panels with mirror-polished, stainless steel interior.
- Main power switch and on/off light switch.
- Solar digital thermometer.
- Refrigeration: Self-contained, high-efficiency fan motors, and digital temperature control with automatic defrost.
- Stainless steel removable mesh condenser filter.
- Front electrical raceway.
- Front to back airflow.
- 6' Cord and plug.

### Available Options

- Case length: 3', 5' and 6'.
- Case length self-contained R-290: 4' (Refer to the CF-SC R-290 sales sheet for more information).
- No miters or wedges available.
- Exterior finishes: Exterior grade laminate. additional paint colors or stainless steel.
- White or stainless steel case interior
- Additional 12" adjustable angled (0°, 5° and 15°) black painted metal shelving with black price tag molding with 3" polycarbonate product stop.
- Clearvoyant® LED under shelf lighting.
- Cart bumper mounted on front panel of case.
- Cart bumper added to end panels.
- Recessed casters.
- Retractable night curtain with or without locking feature.
- Polycarbonate night cover.
- Lift gate shipping option.

## Fast Facts...

- The LED lighting, combined with the flexibility of adjustable shelves, provides a superior product visibility design allowing the customer to see the product at a distance while always keeping it in the refrigerated zone at the desired NSF temperature.
- Built-in, rear condenser chimney exhaust provides flexibility in placement of the display case and improved shopper comfort with heat released from the top of the chimney.
- Easy-to-remove painted or stainless metal interior parts ensure ease of case cleaning piece-by-piece without tools for improved food safety, reduced labor costs and a sanitary environment ready to be merchandised.