

JNRBHS AK

High Narrow Reach-In Self Contained Merchandiser
2 Door & 4' (Meal Kit)

GENERAL NOTES:

- Lighting Controls and Anti Sweat Heat Controls are Required

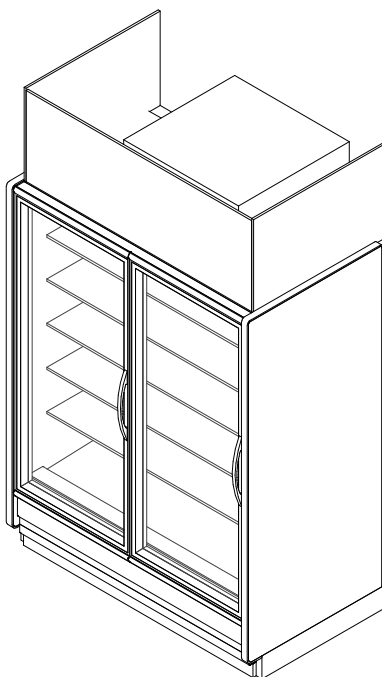
- Option 1: OEM Provided:

Occupancy Sensor Based Lighting Controls (On/Off) & Hillphoenix provided embedded Anti Sweat Controls are standard, unless otherwise specified

- Option 2: End User Provided:

Lighting Controls should be Occupancy Sensor Based or on a minimum 8 Hour Off Schedule. Customer provided A/S Heat Controls should be set to 30% minimum off time at 75°F/55%RH

- 4' case lengths available in 120V R448A condensing unit configuration.
- 2 door lengths available in 208V R404A/R448A condensing unit configuration.



SHIPPING WEIGHT	
Case	Weight
JNRBHS AK	---



COMPONENT

ALL MEASUREMENTS ARE TAKEN PER ASHRAE-72-2005 SPECIFICATIONS. HILLPHOENIX REFRIGERATED DISPLAY CASES FOR SALE IN THE UNITED STATES MEET OR EXCEED DEPARTMENT OF ENERGY 2017 REQUIREMENTS.

JNRBHS AK

Rev. Date	Rev. #	Rev. Title
12-18-19	4	DATA UPDATE
10-17-19	3	ENDVIEW UPDATE

Hillphoenix
A DOVER COMPANY

JNRBHSK (R404A)

High Narrow Reach-In Self Contained Merchandiser
2 Door & 4' (Meal Kit)

SYSTEM REQUIREMENT (R-404A)

Case Length	Volts	Phase	Frequency	Minimum Circuit Ampacity (MCA)	Maximum Overcurrent Protection (MOP)	24hr Energy Usage (kWh)
2 Door	208	1	60	16.3	20.0	6.4

GUIDELINES AND CONTROL SETTINGS (R404A)

Case Length	Application	Superheat Set Point @ Bulb (°F)	Discharge Air (°F)	Set Point Differential (°F)	Discharge Air Velocity (FPM)
2 Door	Meal Kit	6 - 8	29	6	230

CONDENSING UNIT DATA (R404A)

Case Length	Volts	Phase	Frequency	Horsepower	Running Load Amps (RLA) (Amps)	Locked Rotor Amps (LRA) (Amps)	Refrigerant	Lbs. of Refrigerant
2 Door	208	1	60	1/3	4.2	16.8	R404A	2.2

DEFROST CONTROLS (R404A)

Case Length	Application	Defrosts Per Day	Run-Off Time (Min)	Fail-Safe (Min)	Termination Temp (F)
2 Door	Meal Kit	2	0	46	44

DEFROST SCHEDULE (R404A)

Defrosts Per Day	Time
2	12 a.m. - 12 p.m.

NOTES:

- "---" indicates that this feature is not an option on this case model.
- Listed discharge air velocity represents the average velocity at the peak of defrost.
- Temperature and defrost settings listed below are recommended start-up settings. Final operational settings may need to be adjusted for the store conditions in which the case operates.
- The recommended evaporator temperatures may need to be adjusted based on system setup, store conditions, etc. The minimum recommended evaporator temperature is 4°F below the listed evaporator temperature.
- The 24 Hour Energy Value is based upon AHRI 1200 test conditions with Hillphoenix provided evaporator fans, condensing unit, LED lights, occupancy sensor based (on/off) lighting control, dew point based anti-sweat heat controller, condensate pump, evaporator pan, heated door frame, and un heated glass doors/off cycle defrost on medium temp cases.



ALL MEASUREMENTS ARE TAKEN PER ASHRAE-72-2005 SPECIFICATIONS. HILLPHOENIX REFRIGERATED DISPLAY CASES FOR SALE IN THE UNITED STATES MEET OR EXCEED DEPARTMENT OF ENERGY 2017 REQUIREMENTS.

JNRBHSK (R404A)

Rev. Date	Rev. #	Rev. Title
12-18-19	4	DATA UPDATE
10-17-19	3	ENDVIEW UPDATE

Hillphoenix
A DOVER COMPANY

JNRBHSK(R448A)

High Narrow Reach-In Self Contained Merchandiser
2 Door & 4' (Meal Kit)

SYSTEM REQUIREMENT (R448A)

Case Length	Volts	Phase	Frequency	Minimum Circuit Ampacity (MCA)	Maximum Overcurrent Protection (MOP)	24hr Energy Usage (kWh)
2 Door	208	1	60	15.8	20.0	6.4
4'	120	1	60	11.8	15.0	5.4

GUIDELINES AND CONTROL SETTINGS (R448A)

Case Length	Application	Superheat Set Point @ Bulb (°F)	Discharge Air (°F)	Set Point Differential (°F)	Discharge Air Velocity (FPM)
2 Door	Meal Kit	6 - 8	29	6	230
4'	Meal Kit	6 - 8	30	4	183

CONDENSING UNIT DATA (R448A)

Case Length	Volts	Phase	Frequency	Horsepower	Running Load Amps (RLA) (Amps)	Locked Rotor Amps (LRA) (Amps)	Refrigerant	Lbs. of Refrigerant
2 Door	208	1	60	1/3	3.6	17.5	R448A	2.25
4'	120	1	60	1/4	4.0	26	R448A	2.5

DEFROST CONTROLS (R448A)

Case Length	Application	Defrosts Per Day	Run-Off Time (Min)	Fail-Safe (Min)	Termination Temp (F)
2 Door	Meal Kit	2	0	46	44
4'	Meal Kit	2	0	60	40

DEFROST SCHEDULE (R448A)

Defrosts Per Day	Time
2	12 a.m. - 12 p.m.

NOTES:

- "----" indicates that this feature is not an option on this case model.
- Listed discharge air velocity represents the average velocity at the peak of defrost.
- Temperature and defrost settings listed below are recommended start-up settings. Final operational settings may need to be adjusted for the store conditions in which the case operates.
- The recommended evaporator temperatures may need to be adjusted based on system setup, store conditions, etc. The minimum recommended evaporator temperature is 4°F below the listed evaporator temperature.
- The 24 Hour Energy Value is based upon AHRI 1200 test conditions with Hillphoenix provided evaporator fans, condensing unit, LED lights, occupancy sensor based (on/off) lighting control, dew point based anti-sweat heat controller, condensate pump, evaporator pan, heated door frame, and un heated glass doors/off cycle defrost on medium temp cases.



ALL MEASUREMENTS ARE TAKEN PER ASHRAE-72-2005 SPECIFICATIONS. HILLPHOENIX REFRIGERATED DISPLAY CASES FOR SALE IN THE UNITED STATES MEET OR EXCEED DEPARTMENT OF ENERGY 2017 REQUIREMENTS.

JNRBHSK(R448A)

Rev. Date	Rev. #	Rev. Title
12-18-19	4	DATA UPDATE
10-17-19	3	ENDVIEW UPDATE

Hillphoenix
A DOVER COMPANY

JNRBHSK (Meal Kit) Case Configuration		
Case Model	JNRBHSK (Meal Kit) Base Model	JNRBHSK (Meal Kit) Configured Options
Length	2 Door, Single Swing 4', French Swing	
Case Use	Beverage, Dairy, Deli, Meat	
Base Frame	Optional: Split Base Frame (2" +3.25) for 80" Doorway Restriction	Std 5"
Exterior Color	Black	Optional: Custom Color
Interior Color	White	Optional: Custom, Bright Stainless SA
LH End Type	Square	Optional: Square ends with unheated glass thermopane window
RH End Type	Square	Optional: Square ends with unheated glass thermopane window
End Skins	Interior: CC or WH Exterior: CC	Optional: Interior: SA Exterior: S3
End Trim Type/Color	Black PVC	Optional: Stainless Steel Metal Trim
Door Type (Std, Elim, Etc.)	ELMD (2 Door, Single Swing) Vista C (4', French Swing)	Optional: I90 (2 Door, Single Swing), I60 (4', French Swing)
Door Frame Style	101 (2 Door, Single Swing) Vista (4', French Swing)	
Door Lighting	LED-Optimax Radiant	
Door Handle (Full, Short)	Short (ELMD), Arch (Vista C)	Optional: Arch or Full I90
Door Color	Black	
Anti Fog	No	With Anti Fog Coating
Door Gasket Type	LifePlus	
Master Bumper	None	
Nose Bumper	Boston Bumper with End Caps/ Black	
Rack Type	White, 22" with 4" lip	
Shelf Arrangement	(5) 22" Shelves	
PTM Type	Aluminum	
Wiring	Top; 208V 4 Wire Single Point Connection, Carel Controller (2 Door, Single Swing) Top; 120V 3 Wire Single Point Connection, Carel Controller (4', French Swing)	
Refrigerant	DX R404A (2 Door, Single Swing), DX R448A (4', French Swing)	
Piping	Top	
Defrost	Off Cycle	
Heat Exchanger	None	
Fans (HE, STD)	ECM	
Refrigeration Accessories	None	
Thermometer	Std - Dial	
Probe	None	
Special Instructions	Ship Loose Condensing Unit + Drain Pump + Pan	Optional: Fully Installed Condensing Unit + Pump + Pan

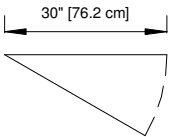
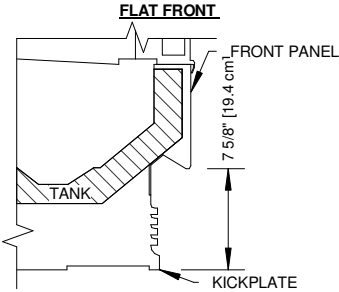
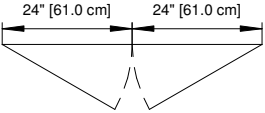


ALL MEASUREMENTS ARE TAKEN PER
ASHRAE-72-2005 SPECIFICATIONS. HILLPHOENIX
REFRIGERATED DISPLAY CASES FOR SALE IN THE
UNITED STATES MEET OR EXCEED DEPARTMENT
OF ENERGY 2017 REQUIREMENTS.

JNRBHSK

Rev. Date	Rev. #	Rev. Title
12-18-19	4	DATA UPDATE
10-17-19	3	ENDVIEW UPDATE

Hillphoenix
A DOVER COMPANY

DOOR OPTIONS	FRONT OPTIONS
<p>STANDARD SWING DOOR 2 - DOOR CASES</p> 	<p><u>FLAT FRONT</u></p> 
<p>BI- SWING DOOR 4' CASES</p> 	

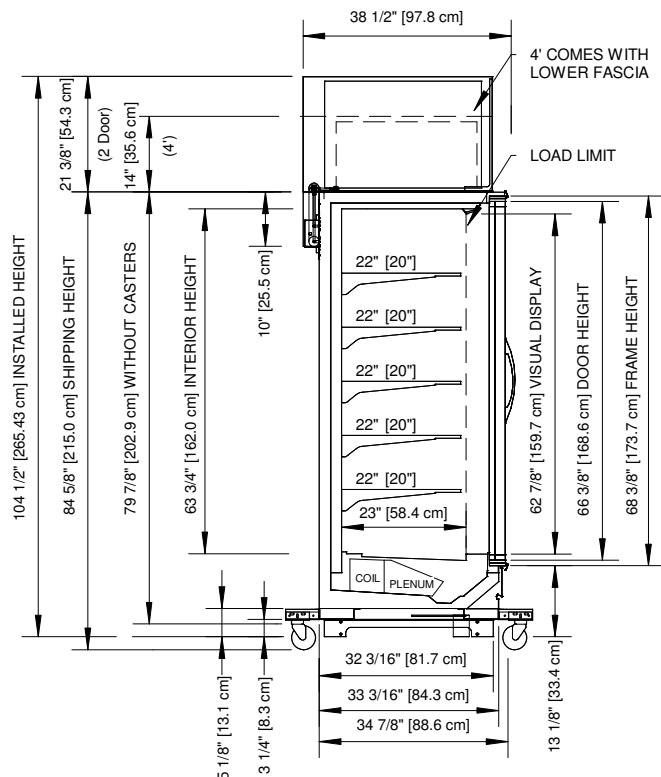


ALL MEASUREMENTS ARE TAKEN PER ASHRAE-72-2005 SPECIFICATIONS. HILLPHOENIX REFRIGERATED DISPLAY CASES FOR SALE IN THE UNITED STATES MEET OR EXCEED DEPARTMENT OF ENERGY 2017 REQUIREMENTS.

JNRBHSAK

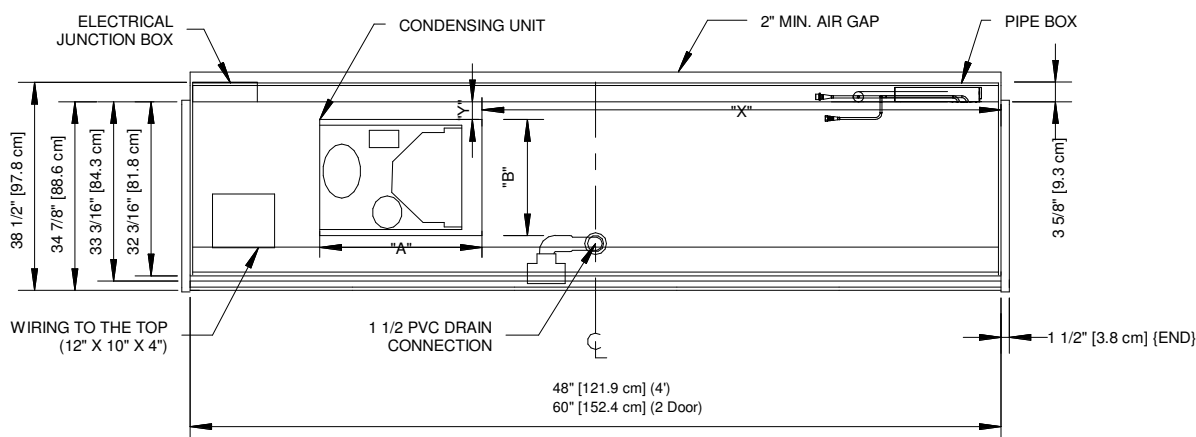
Rev. Date	Rev. #	Rev. Title
12-18-19	4	DATA UPDATE
10-17-19	3	ENDVIEW UPDATE

High Narrow Reach-In Self Contained Merchandiser
2 Door & 4' (Meal Kit)



CONDENSING UNIT SIZE AND POSITION R404A	
REFRIGERANT	R404 A
CASE LENGTH	2DR
"X"	19.5"
"Y"	4.5"
"A"	16.6"
"B"	13.1"

CONDENSING UNIT SIZE AND POSITION R448A		
REFRIGERANT	R448 A	
CASE LENGTH	2DR	4'
"X"	14"	5"
"Y"	2"	2.5"
"A"	18.3"	14.1"
"B"	13.4"	12.1"



NOTES:

* : STUB-UP AREA.

** : RECOMMENDED STUB-UP CENTERLINE FOR ELECTRICAL AND HUB DRAINS.

Specialized Base Frame:

- Case fits through 80" doorway with shipping undercarriage removed.
- 2" lifting brackets (installed) & 3.25" ship loose risers combine for 5" baseframe once installed.
- Drain traps ship loose.
- Ends add approximately 1" to case height, 1/2" to the back & 1" to the front.



ALL MEASUREMENTS ARE TAKEN PER
ASHRAE-72-2005 SPECIFICATIONS. HILLPHOENIX
REFRIGERATED DISPLAY CASES FOR SALE IN THE
UNITED STATES MEET OR EXCEED DEPARTMENT
OF ENERGY 2017 REQUIREMENTS.

JNRBHS AK

Rev. Date	Rev. #	Rev. Title
12-18-19	4	DATA UPDATE
10-17-19	3	ENDVIEW UPDATE

Hillphoenix
A BOWER COMPANY