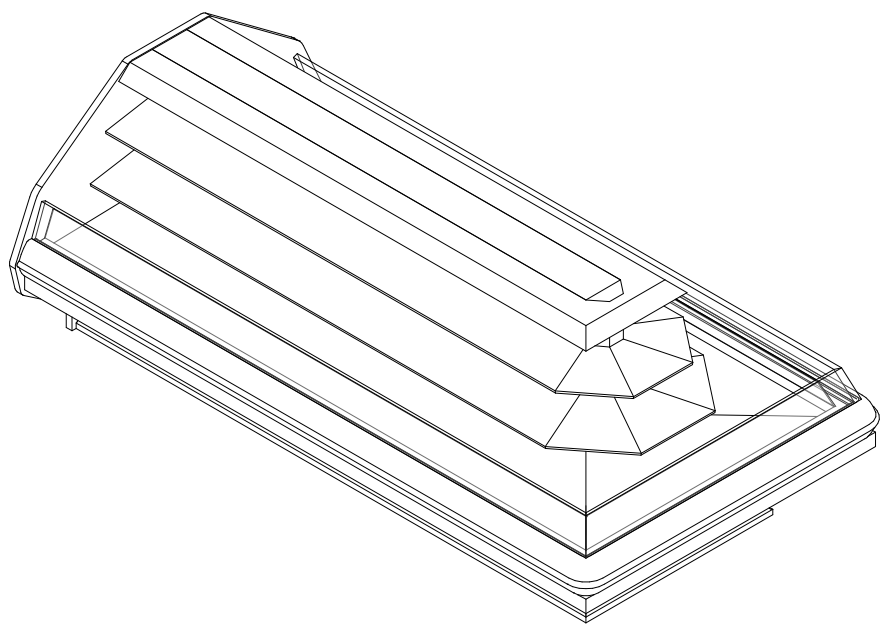


O3IMB

6', 8', & 12' Wide Multi-Deck Island Merchandiser
(Deli / Meat) Single Wrap-Around End

GENERAL NOTES

- "----" indicates that the feature is not an option on this case model and/or that the data is not yet available.
- LED lights only.
- Cornice lights are either standard or high output.
- Shelf lights are standard output only.



SHIPPING WEIGHT	
Case	Weight
O3IMB	----



COMPONENT

ALL MEASUREMENTS ARE TAKEN PER ASHRAE-72-2005 SPECIFICATIONS. HILLPHOENIX REFRIGERATED DISPLAY CASES FOR SALE IN THE UNITED STATES MEET OR EXCEED DEPARTMENT OF ENERGY 2017 REQUIREMENTS.

O3IMB

Rev. Date	Rev. #	Rev. Title
7-10-18	2	NEW STANDARDS
12-1-17	1	DOE 2017



A DOVER COMPANY

ELECTRICAL DATA

Case Length	Fans Per Case	High Efficiency Fans		Anti Condensate Heaters		Defrost Heaters			
		120 Volt		120 Volts		208 Volts		240 Volts	
		Amps	Watts	Amps	Watts	Amps	Watts	Amps	Watts
6'	4	0.31	18.4	0.63	76.0	5.77	1200	6.66	1596
8'	6	0.46	27.6	0.88	106.0	7.70	1600	8.88	2130
12'	8	0.62	36.8	1.24	149.0	11.54	2400	13.32	3200

LIGHTING DATA

Case Length	Shelf Depth	Lights Per Row	Lights Length	Standard Power (Cornice or Shelf)		High Power (Cornice Only)	
				120 Volts		120 Volts	
				Amps	Watts	Amps	Watts
6'	Top Sill	3	1 (2'), 2 (4')	0.12	14.8	0.31	37.6
6'	8"	3	1 (0.5'), 2 (3')	0.09	10.5	---	---
6'	10", 12", 14", 16"	3	1 (1'), 2 (3')	0.09	11.3	---	---
8'	Top Sill	5	1 (2'), 4 (3')	0.22	26.6	0.56	67.5
8'	8"	3	1 (0.5'), 2 (5')	0.13	16.1	---	---
8'	10", 12", 14", 16"	3	1 (1'), 2 (5')	0.14	16.9	---	---
12'	Top Sill	7	1 (2'), 6 (3')	0.32	38.4	0.81	97.4
12'	8"	5	1 (0.5'), 2 (4'), 2 (5')	0.23	27.9	---	---
12'	10", 12", 14", 16"	5	1 (1'), 2 (4'), 2 (5')	0.24	28.7	---	---

GUIDELINES AND CONTROL SETTINGS

Application	BTUH/ft		Superheat Set Point @ Bulb (°F)	Evaporator (°F)	Discharge Air (°F)	Discharge Air Velocity (FPM)
	Conventional	Parallel				
Meat	1530	1381	6 - 8	17	26	270
Deli	1409	1272	6 - 8	22	30	270

DEFROST CONTROLS

Defrosts Per Day	Run Off Time (Min)	Electric Defrost		Timed-Off Defrost		Hot Gas Defrost	
		Fail Safe (Min)	Termination Temp (°F)	Fail-Safe (Min)	Termination Temp (°F)	Fail Safe (Min)	Termination Temp (°F)
4	6 - 8	30	47	45	45	26	45

NOTES

- "---" indicates that the feature is not an option on this case model and/or that the data is not yet available.
- Listed LED lighting values represent a full row of shelves (including wrap-around ends).
- Listed BTUH/ft data represents unlighted shelves. For LED lighting, add 9 BTUH/ft per row of lighted shelving.
- Load data represents the sum of both coils.
- Listed evaporator temperature represents unlighted shelves. For lighted shelves and/or aftermarket merchandising accessories, reduce the listed evaporator temperature by 2°F.
- BTUH load increases by 132 BTUH/ft when aftermarket merchandising accessories are utilized.
- Listed discharge air velocity represents the average velocity at the peak of defrost.
- Temperature and defrost settings listed above are recommended start-up settings. Final operational settings may need to be adjusted for the store conditions in which the case operates.
- The recommended evaporator temperatures may need to be adjusted based on system setup, store conditions, etc. The minimum recommended evaporator temperature is 4°F below the listed evaporator temperature.



ALL MEASUREMENTS ARE TAKEN PER ASHRAE-72-2005 SPECIFICATIONS. HILLPHOENIX REFRIGERATED DISPLAY CASES FOR SALE IN THE UNITED STATES MEET OR EXCEED DEPARTMENT OF ENERGY 2017 REQUIREMENTS.

O3IMB

Rev. Date	Rev. #	Rev. Title
7-10-18	2	NEW STANDARDS
12-1-17	1	DOE 2017

Hillphoenix
A DOVER COMPANY

O3IMB

6', 8', & 12' Wide Multi-Deck Island Merchandiser
(Deli / Meat) Single Wrap-Around End

SECOND NATURE DATA

Case Model	No. of Coils	Application	Front Sill Type	BTUH/ft (DR)		GPM/ft (DR)	Supply Fluid Temp (F)	Discharge Air Temp (F)
				Conventional	Parallel			
O3IMB	2	Meat	6" Thermopane	1530	1381	1.14	20	26
O3IMB	2	Deli	6" Thermopane	1409	1272	1.05	20	30

SECOND NATURE DATA

Case Model	No. of Coils	Application	Front Sill Type	No. of Defrost	Timed Off Defrost		Warm Fluid Defrost	
					Fail Safe (Min)	Termination Temp (F)	Fail Safe (Min)	Termination Temp (F)
O3IMB	2	Meat	6" Thermopane	4	60	47	26	49
O3IMB	2	Deli	6" Thermopane	4	60	47	26	49

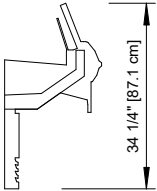
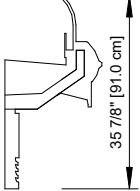
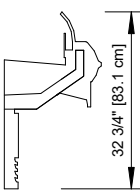
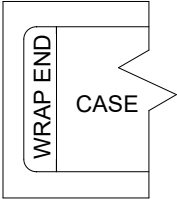
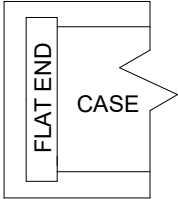
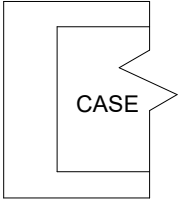
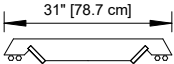
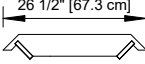


ALL MEASUREMENTS ARE TAKEN PER ASHRAE-72-2005 SPECIFICATIONS. HILLPHOENIX REFRIGERATED DISPLAY CASES FOR SALE IN THE UNITED STATES MEET OR EXCEED DEPARTMENT OF ENERGY 2017 REQUIREMENTS.

O3IMB

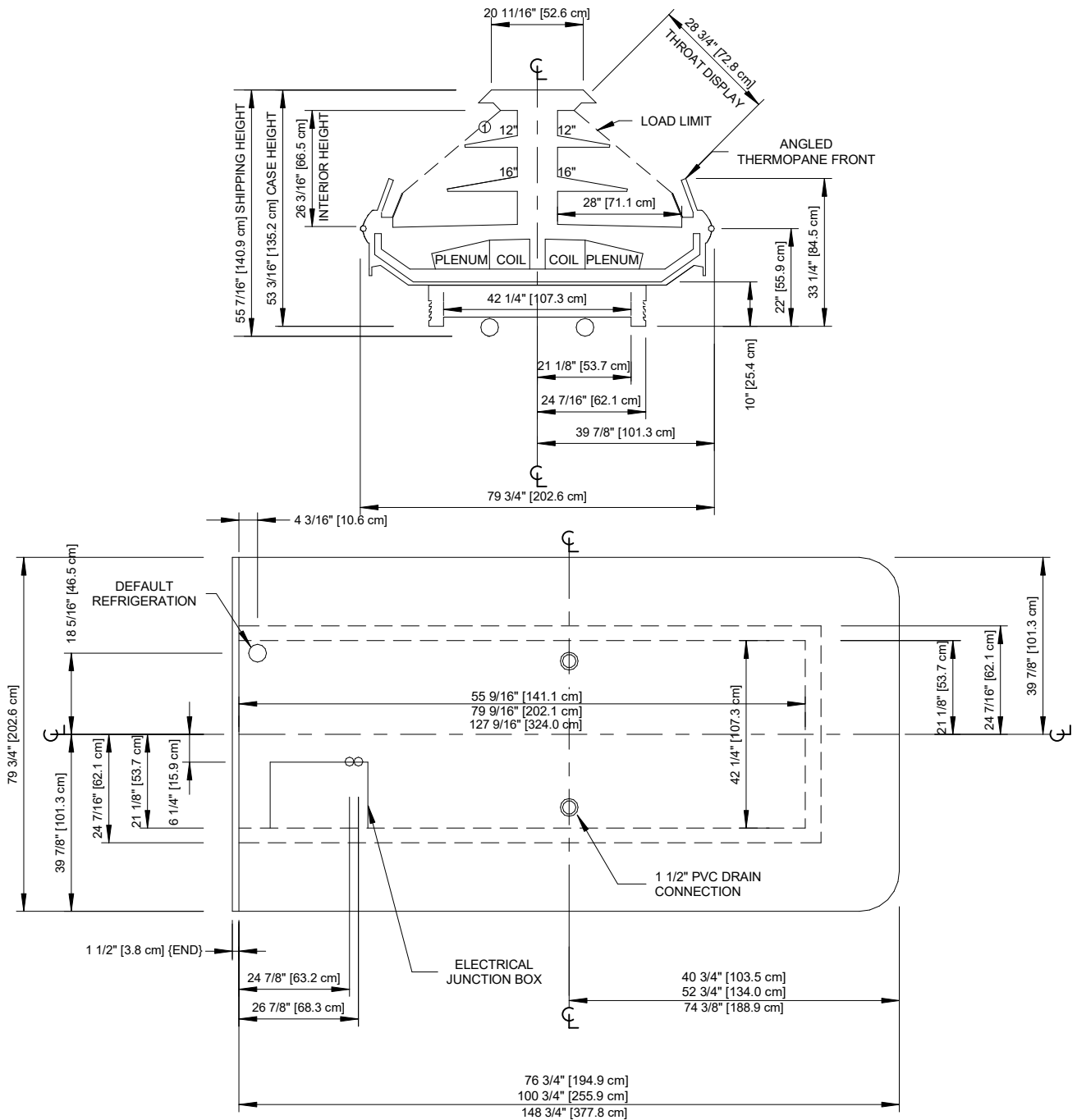
Rev. Date	Rev. #	Rev. Title
7-10-18	2	NEW STANDARDS
12-1-17	1	DOE 2017

Hillphoenix
A DOVER COMPANY

FRONT OPTIONS		
<u>ANGLED THERMOPANE</u> 	<u>8.75\" CURVED PLEXI</u> 	<u>5.5\" CURVED PLEXI</u> 
END OPTIONS		
<u>SINGLE WRAP END</u> 	<u>SINGLE FLAT END</u> 	<u>SINGLE JOINT (SINGLE BUTT)</u> 
CENTER TOWER OPTIONS		
<u>31\" LIGHTED TOWER</u> 	<u>24\" TOWER</u> 	

Rev. Date	Rev. #	Rev. Title
7-10-18	2	NEW STANDARDS
12-1-17	1	DOE 2017

6', 8', & 12' Wide Multi-Deck Island Merchandiser
(Deli / Meat) Single Wrap-Around End



NOTES

**** : STUB-UP AREA**

① : AVAILABLE SHELF SIZES: 10" , 12" , 14" , 16"

- Front and center sill heights vary with base frame height.



ALL MEASUREMENTS ARE TAKEN PER
ASHRAE-72-2005 SPECIFICATIONS. HILLPHOENIX
REFRIGERATED DISPLAY CASES FOR SALE IN THE
UNITED STATES MEET OR EXCEED DEPARTMENT
OF ENERGY 2017 REQUIREMENTS.

O3IMB

Rev. Date	Rev. #	Rev. Title
7-10-18	2	NEW STANDARDS
12-1-17	1	DOE 2017

Hillphoenix
A DOVER COMPANY