

**Hillphoenix**

a **DOVER** company

**The  
SFC  
Group**

*Solutions for  
convenience sake*



## **ON5DMX**

### Medium Temperature Open Multi-Deck

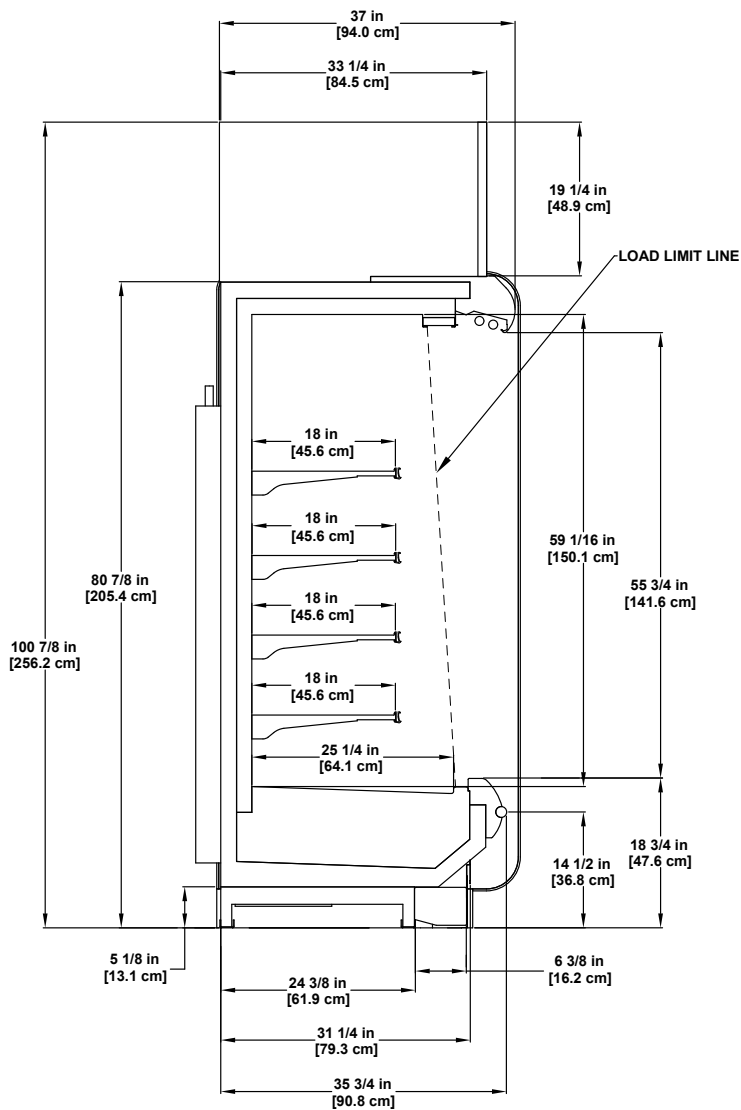
Small-store format, refrigerated open merchandiser for bakery, beverage, dairy, deli and produce.

## ON5DMX - Medium Temperature Open Multi-Deck



### Base Model Features

- Available lengths – 4', 6', 8' & 12'.
- 5" baseframe.
- Custom color 18" flat front panel and sill cap.
- 1" black bumper.
- Black PVC kick plates.
- Square end panels with black PVC trim.
- Black interior with black metal deck pans.
- Black flat bottom wire rack with 3" lip and black PVC PTM.
- (4) rows 20"x48" 2-position matte black solid shelves w/CC Alum PTM.
- (2) rows Clearvoyant LED canopy lights: 3000K standard output lights.
- Solar digital thermometer.
- Refrigeration:
  - R448A DX refrigerant.
  - TXV balance port sweat.
- Heat exchanger.
- Refrigeration lines piped to the bottom.
- Hand valve.
- EBM high-efficiency fan motors.
- Time-off defrost.
- Conforms to UL Standard 471, NSF Standard 7 and CAN/CSA C22.2.



2017  
DOE  
COMPLIANT

Please consult Hillphoenix Engineering Reference Manual for dimensions, plan views and technical specifications. Specifications are subject to change without notice. Certified to UL 471 and ANSI/NSF standard 7.

Designed for optimal performance in store environments where temperatures and humidity do not exceed 75°F and 55%R.H.

## Available Options

- Brushed stainless front end trim (S3).
- 21" front with nose light (3000K STD LED).
- Night curtain, bracket mount, non-cassette, magnet handle.
- White case interior.
- Heavy-duty front baffle & deck pans.
- Heavy-duty 22"x48" 2-position shelving.
- Lighted shelves with 3000K standard Clearvoyant LED lights.
- Slotted tag molding.
- 3.5" plexi product stops.
- Top wiring.
- R407A refrigerant.
- Top piping.
- Temperature control TStat.
- Temperature probe.
- Self-contained.

## Fast Facts...

- Unique design ensures uniform case performance and lower average product temperatures with optimum energy efficiency.
- All-steel construction for increased life span and structural integrity.
- Seamless tank liner provides positive drain runoff and enhanced sanitation.
- Bottom-mounted copper coil and modular interior components allow easy access to the coil, fans and drain for ease of maintenance.

**Hillphoenix**

a **DOVER** company

2016 Gees Mill Road  
Conyers, GA 30013  
844.591.5937  
[www.hillphoenix.com](http://www.hillphoenix.com)

©2018 Hillphoenix, Inc.