

FFJ - JUMBO ISLAND FROZEN FOOD

Tyler Refrigeration Corporation

625 Btuh/Ft. @ -25°F Suction & -15°F Entering Air Temp.

CASE MODELS	LINEAL FEET	75°F (24°C) Store 1000 Btuh/hr Req'd.	CONDENSING UNIT SELECTION CHART R22					LINE SIZING					ELECTRICAL DATA							
			AIR ENTERING THS CONDENSING					SUCTION LINE					LIQUID LINE	208 VOLT DEFROST			115 VOLT DATA			
			85F	90F	95F	100F	105F	M	E	T	E	R		ONE PHASE TOTAL AMPS	DEFROST CONTROL REQD 3-PHASE	THREE PHASE HIGH LEG(S)	Fan Amp hef Std.	A.S heat circ amps	A.S. heat w/S.S. amps	Opt. Shelf Lites per row
			30C	32C	35C	38C	41C	15	30	45	60	75								
8' 12'	8	5.0										3/8"	13.8	TG-30	12A	1.48 2.0	2.8	3.8 2.0	2.0	
	12	7.5	200L									7/8"	20.6	↓	18A	2.22 3.0	3.3	5.2	3.0	
2	16	10.0	300L									1 1/8"	27.6	TG-40 TG-3-30	18A	2.96 4.0	5.6	7.6	4.0	
1	20	12.5	D301L									1 1/8"	34.4	TG-50 TG-3-40	21A	3.70 5.0	6.1	9.0	5.0	
	24	15.0	D401L									1 1/8"	41.2	↓	27A	4.44 3.0	6.6	10.4	6.0	
2	28	17.5	D601L									1 1/8"		TG-3-40	30A	5.18 7.0	8.9	12.8	7.0	
1	32	20.0	D651L									1 3/8"		TG-3-50	33A	5.92 8.0	9.4	14.2	8.0	
	36	22.5	D661L									1 3/8"		↓	36A	6.66 9.0	9.9	15.6	9.0	
2	40	25.0	D751L									1 5/8"		↓	42A	7.40 10.0	12.2	18.0	10.0	
1	44	27.5	D901L									1 5/8"		TG-3-40-40	24/24A	8.14 11.0	12.7	19.4	11.0	
	48	30.0	D901L									5/8"		↓	27/27A	8.88 12.0	13.2	20.8	12.0	
2	52	32.5	D901L									5/8"		↓	30/30A	9.62 13.0	15.5	23.2	13.0	
1	56	35.0	D1001L									5/8"		TG-3-50-50	36/36A	10.36 14.0	16.0	24.6	14.0	

- Anti-Sweat Heater Note: Nameplate amps reflect a/s heater for case and superstructure. 3.8A for 8' and 5.2A for 12' cases.
- CASE CIRCUITS: In addition to the 208V defrost circuit, there is the 115V case Fan circuit plus the 115V case anti-sweat heater circuit. Anti-sweat heat is not required 100% of the time in most stores and the use of a Tyler ES-2 Energy Saver control to cycle this circuit as required is strongly recommended. Shelf or canopy lights require a separate 115V circuit which can be switched at the back room for convenience in controlling the lights.
- FFJE End Case: Refrigeration Load requirements are 2600 BTUH @ -25F for frozen food usage. Defrost Requirements: 8.6A @ 208V (one 1790W defrost heater). Matching shelves can be used to provide one or two levels of shelving supported from the superstructure end post on the FFJ case adjacent to the end case. There is an additional .2A load for anti-sweat heat on the lower or only shelf adn .3A for a lighted shelf over the end case.
- Meat rating 552 Btuh/Ft. @ +15° Suction & +24° Entering Temp. Dairy rating 524 Btuh/Ft. @ +25° Suction & +35° Entering temp.

ANNUAL COMPARATIVE OPERATING COST PER FOOT OF CASE (C.O.C.)

CASE	Fans/HEF*	A/S Heat	Lights	208V Defrost	Condensing Unit	TOTALS @ 1c/KWH	CONTROL SETTINGS (R-22)			PRESSURE
							DEFROST CONTROL	Mode	Failsafe	
	.767/.438	1.788		.654	\$6.425	\$9.634	Per Day			CUT IN:
8'	70w/40w	176w		1432	w/Opt HEF Motors	\$9.305	1	Electric	60	15-22#
12'	105w/60w	245w		2150	NET SAVINGS	\$.329	2-3	Gas Defr.	16-20	CUT OUT:
									Min.	4-8#

Case Ft. x C.O.C. = "Cost per Year" @ 1c/KWH. USE TOTALS TO COMPARE CASES & OPTIONS! Watts @ 115V *HEF = Hi-Efficiency Fans.

CASE BTUH REQUIREMENTS are calculated to produce approximately the indicated entering case air temp with operating ambient limits of 75°F & 55% RH. SUCTION LINE SIZING: Select the point of intersection of the case line-up and the equivalent footage. Allow for all fittings in addition to the actual line length. STEP SIZING is suggested for selections falling in the first half of a size range. Pipe one size smaller can be used on the 50' of the run closest to the cases when the entire run is 100 equivalent feet or more. LIQUID LINE SIZING is based on 5lb. pressure drop in 150' of line. See complete line size charts in front of the TYLER SPEC GUIDE BOOK.

The information contained herein is based on technical data and tests which we believe to be reliable and is intended for use by persons having technical skill, at their own discretion and risk. Since conditions of use are outside Tyler's control, we can assume no liability for results obtained or damages incurred through the applications of the data presented. SPECIFICATIONS ARE SUBJECT TO CHANGE WITHOUT NOTICE. Printed in the U.S.A.

Tyler Spec Sheet

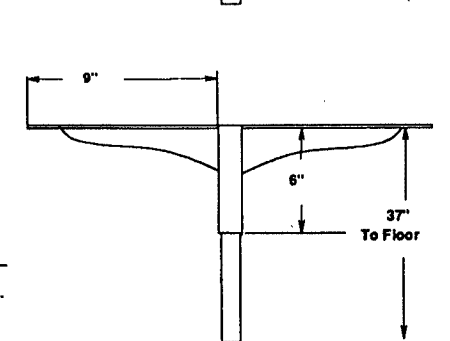
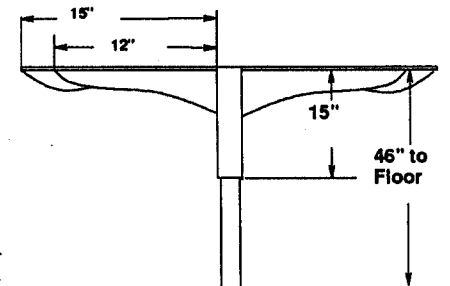
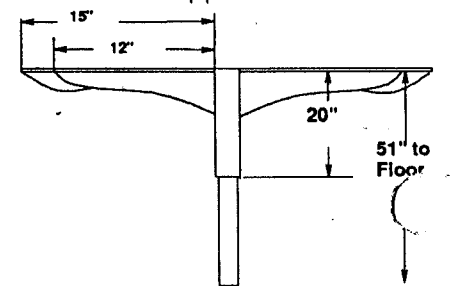
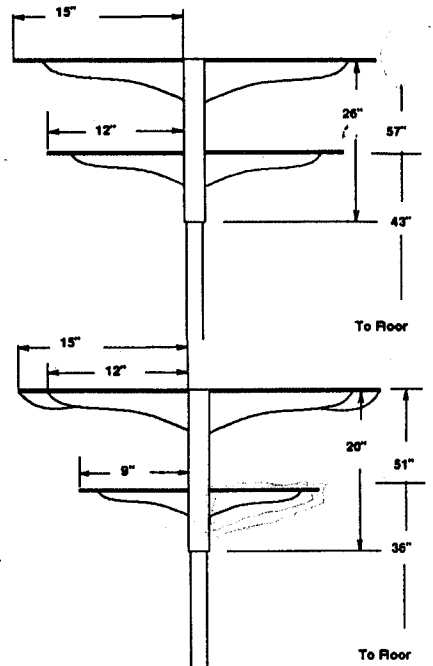
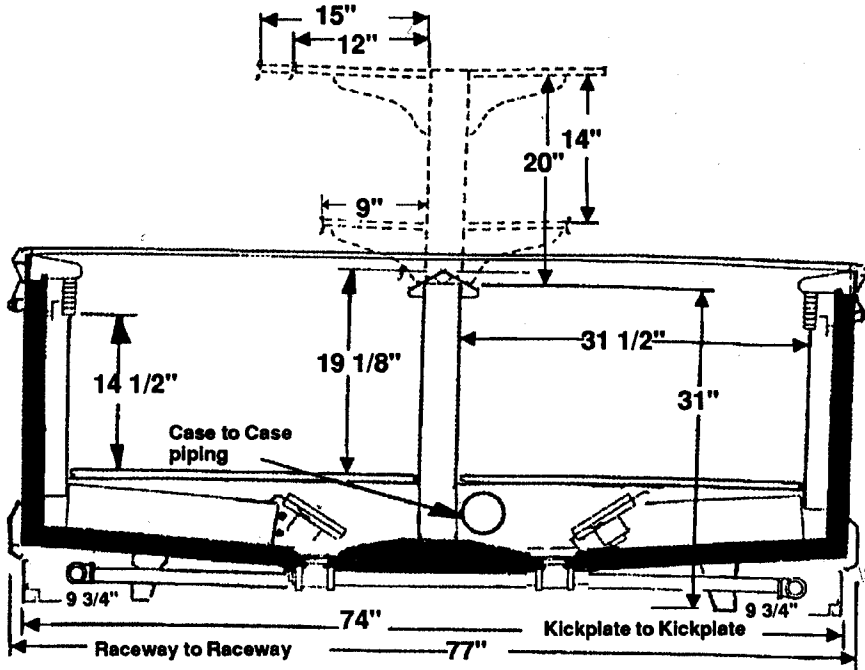
LT-19

FFJ

SG0458 Repl. 12/89 Rev. 10/92

JUMBO ISLAND FROZEN FOOD &/OR ICE CREAM DISPLAY CASES

OPTIONAL SUPERSTRUCTURES



Model	Description	Shelf Area	Capacity
FF(Z)J8	8" F.F.(I.C.)	42.0 Sq. Ft.	50.8 Cu. Ft.
FF(Z)J12	12" F.F.,(I.C.)	63.0 Sq. Ft.	76.1 Cu. Ft.
FF(Z)JE	7" F.F., (I.C.)	14.5 Sq. Ft.	17.5 Cu. Ft.

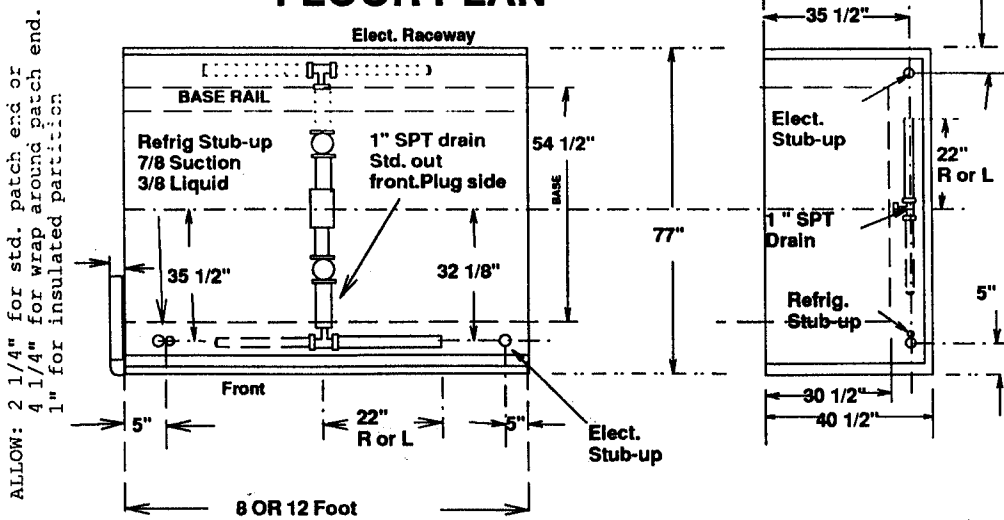
END CASE ELECTRICAL AND REFRIGERATION DATA

Model	Use	Btuh Requ.	115V Fans	115V A-S Wires	208V Defrost
FFJE	F.F.	2600 @ -25F	1.0A	1.3A(2.0A)*	8.6A
FZJE	I.C.	3400 @ -35F	70W	153W(225W)*	1788W

*With optional Rubrail Anti-sweat heater wires

TWIN-TEMP CASE NOTES: FTJ is the twin temp version of this case with ice cream on one side and frozen food on the other and is equipped with two electric defrost heaters on both sides. In addition, this version has an insulated center partition to aid in maintaining the temperature difference between the two sides. Both sides must defrost at the same time. See page 7 of the instructions for particulars.

FLOOR PLAN



Tyler Spec Sheet

LT-20

JUMBO ISLAND CASE

FFJE/FZJE