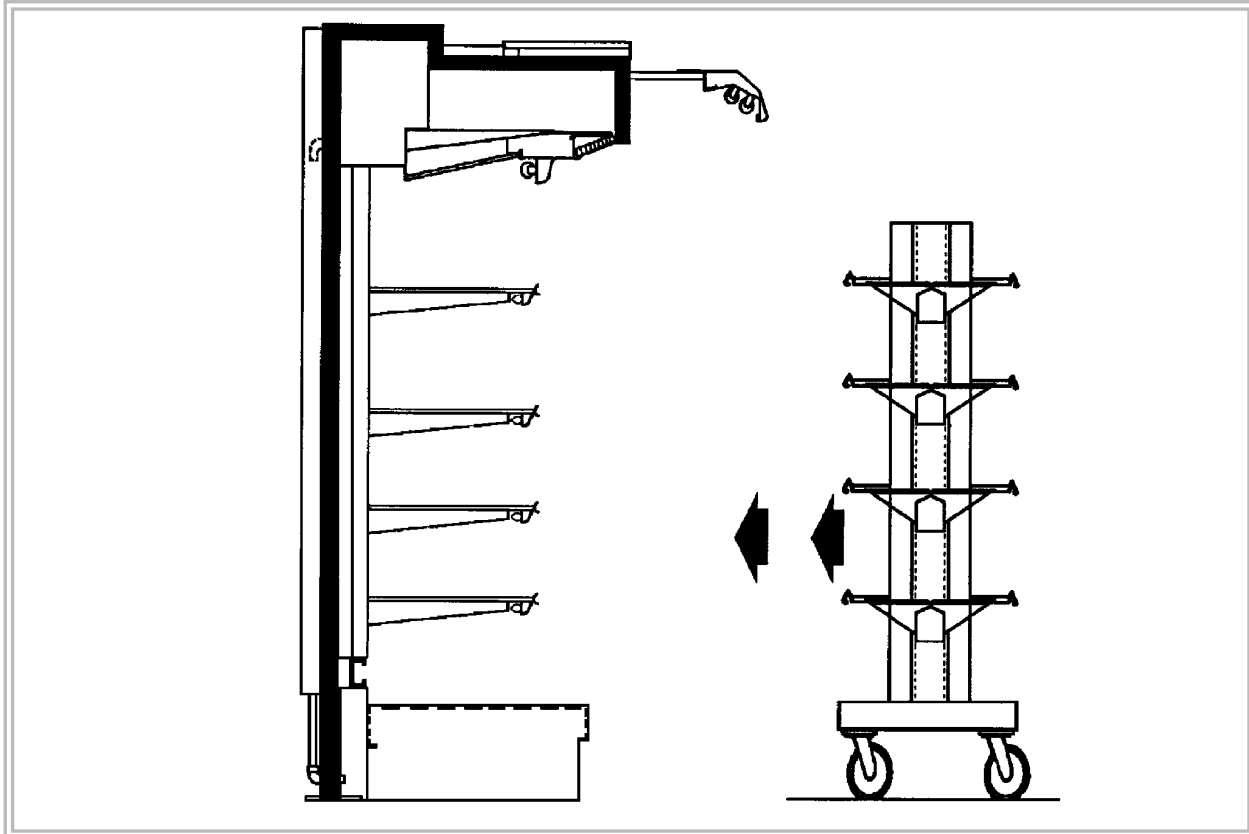


# Replacement Parts <sup>series</sup> Advantage



## Front Load Roll-in Dairy Merchandiser

Production began October 1, 1996

9000242	LDFL8	Med-Temp	8' Front Load Roll-in Dairy Merchandiser
9000243	LDFL12	Med-Temp	12' Front Load Roll-in Dairy Merchandiser

# LDFL



Issue date: AUGUST 1998

Replaces issue:

Part number: 9030986

Revision:

Tyler Refrigeration Corporation Niles, MI 49120  
Parts information subject to change without notice  
Printed in U.S.A.

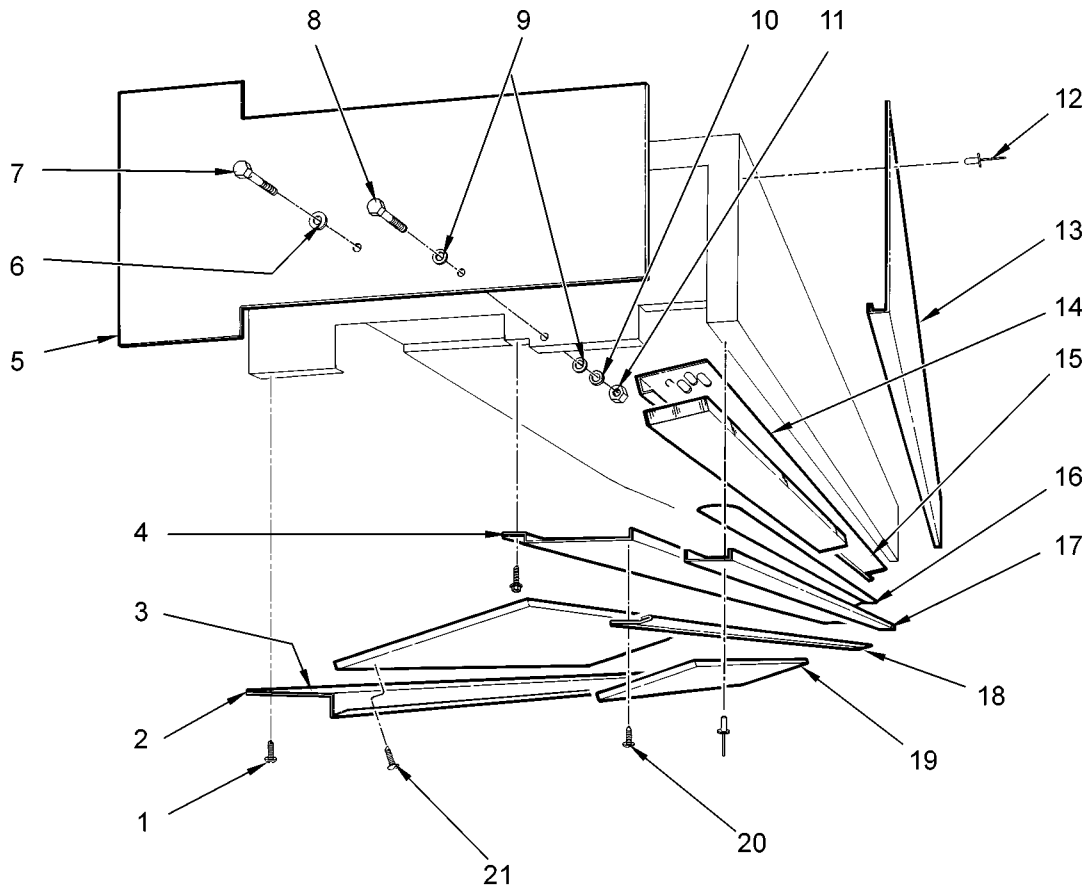


## CONTENTS

	<u>Page</u>
<b>Structural Components</b>	
Top Shelf Assemblies .....	S1
Canopy Assemblies	
Standard Canopy .....	S2
Optional Short Canopies .....	S3, S4
Ducts .....	S5
Rear Uprights and Add-on Base .....	S6
Patch Ends, Partitions and Dividers	
Solid Patch Ends .....	S7, S8
Partition .....	S9
 <b>Electrical System Components</b>	
Wiring Harnesses	
Wiring and Components - LDFL .....	E1
Top Lights .....	E2
Fan Systems .....	E3
 <b>Refrigeration System Components</b>	
Coil Assemblies .....	R1
 <b>Optional Case Accessories</b>	
Shelf Assemblies .....	A1 - A2
Milk Dolly and Egg Cart .....	A3
Thermometers .....	A4



**STRUCTURAL COMPONENTS  
TOP SHELF ASSEMBLIES - LDFL**

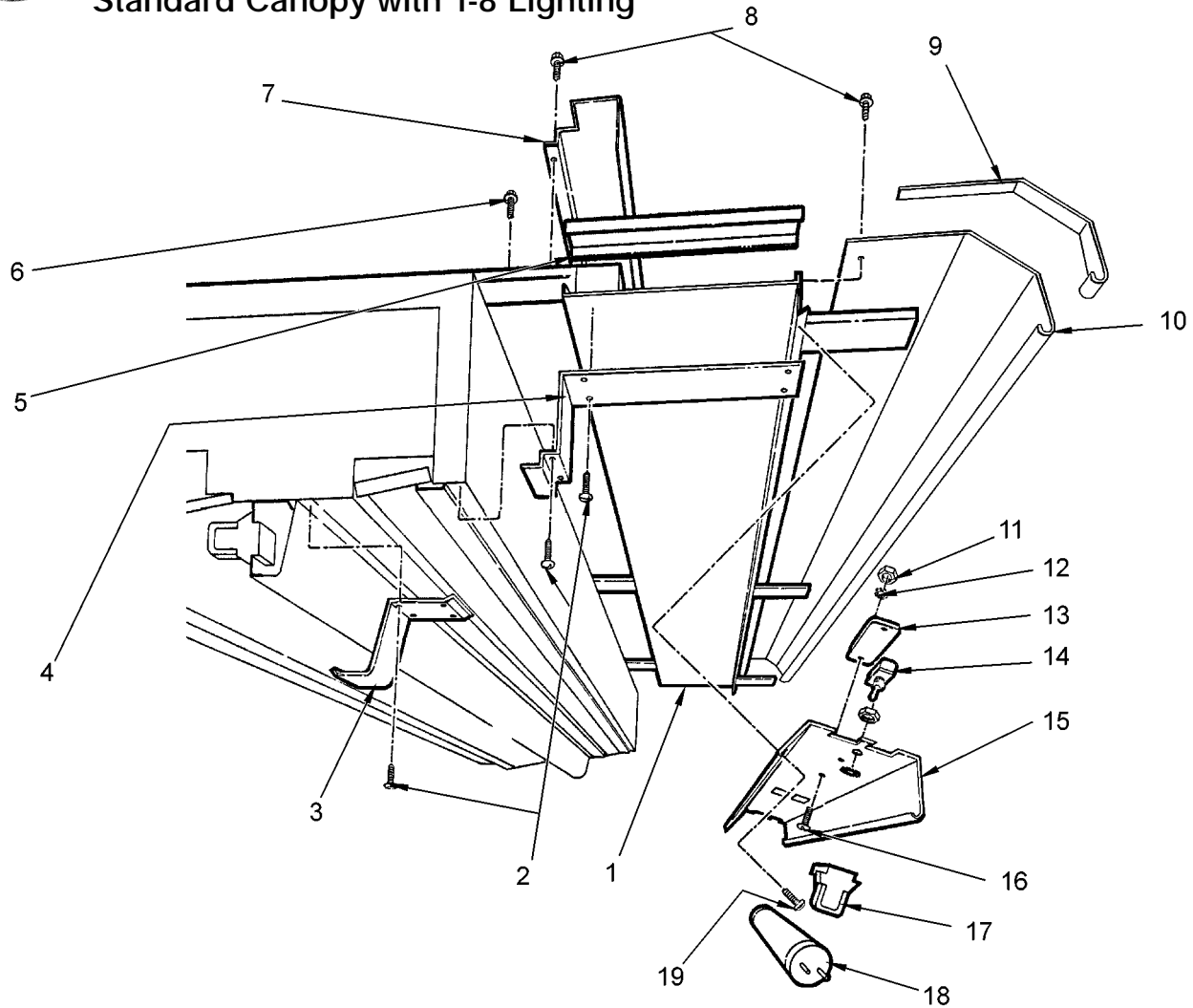


**8' and 12' Merchandiser**

Item	Part No.	Quantity		Description	Item	Part No.	Quantity		Description
		8'	12'				8'	12'	
1	5183536	35	52	Screw	14	5208580	2	3	Air Grid
2	5184577	1	-	Lower Saddle	15	5196237	1	-	Air Restrictor
	5184578	-	1	Lower Saddle		5196238	-	1	Air Restrictor
3	5055741	2	2	Upper End Tray	16	5124818	1	-	Heater Wire
4	5089985	1	-	LWR Grid & Lt. Chnl. Supt.	17	5124819	-	1	Heater Wire
	5089986	-	1	LWR Grid & Lt. Chnl. Supt.		5055731	1	-	Heater Wire Enclosure
5	5184602	2	2	End Spacer	5055732	-	1	Heater Wire Enclosure	
6	5100982	6	6	Washer	5186734	2	2	Heater Wire Encl. End Trim	
					18	5055735	1	-	Air Grid Support Bracket
7	5120913	3	3	Bolt	5055736	-	1	Air Grid Support Bracket	
					5100643	3	3	Nut	
8	5107443	1	1	Bolt	<b>19</b>	<b>5055508</b>	1	-	<b>Upper Center Tray Assy.</b>
9	5100979	2	2	Washer		<b>5055509</b>	-	1	<b>Upper Center Tray Assy.</b>
10	5101006	1	1	Lockwasher	5104702	15	17	Rivet	
11	5100634	1	1	Nut	20	5619204	10	20	Screw
12	5105037	6	8	Rivet	21	5100217	9	16	Screw
13	5210991	1	-	Front Cladding					
	5210992	-	1	Front Cladding					



**STRUCTURAL COMPONENTS - (CONT'D)**  
**CANOPY ASSEMBLIES - LDFL**  
**Standard Canopy with T-8 Lighting**

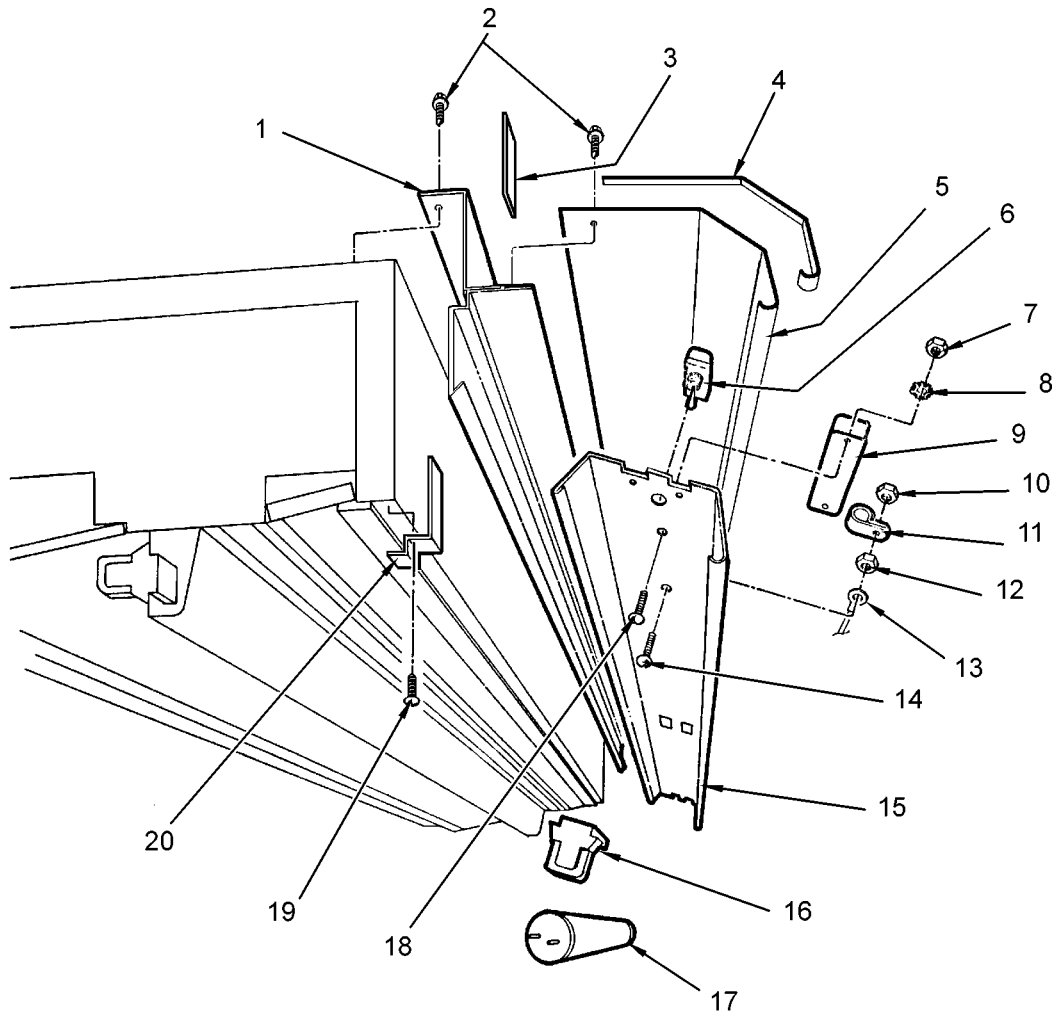


**8' and 12' Merchandiser**

Item	Part No.	Quantity		Description	Item	Part No.	Quantity		Description
		8'	12'				8'	12'	
1	9026544	1	-	Close-off Panel Assy.	11	5111198	2	4	Nut
	9026546	-	1	Close-off Panel Assy.	12	5195180	2	4	Lockwasher
2	5205439	20	20	Screw	13	5966635	1	-	Ballast, 4-Lamp
3	5222014	1	1	Light Channel Joint Trim		5991030	-	2	Ballast, 3-Lamp
4	5222015	1	1	Hood Joint Trim	14	5100565	1	1	Light Switch
5	9026548	1	1	Lower Close-off	15	9026017	1	-	Light Channel
6	1309067	9	12	Screw		9026018	-	1	Light Channel
7	5186277	1	-	Top Cover	16	5111197	2	4	Screw
	5186278	-	1	Top Cover	17	5232279	8	12	Lampholder
8	5183536	13	14	Screw	18	-----	4	6	Lamp
9	9025983	1	1	Hood Backer	19	5183536	10	10	Screw
10	9025223	1	-	Hood					
	9025224	-	1	Hood					



STRUCTURAL COMPONENTS - (CONT'D)  
 CANOPY ASSEMBLIES - LDFL  
 Optional Short Canopy with T-8 Lighting

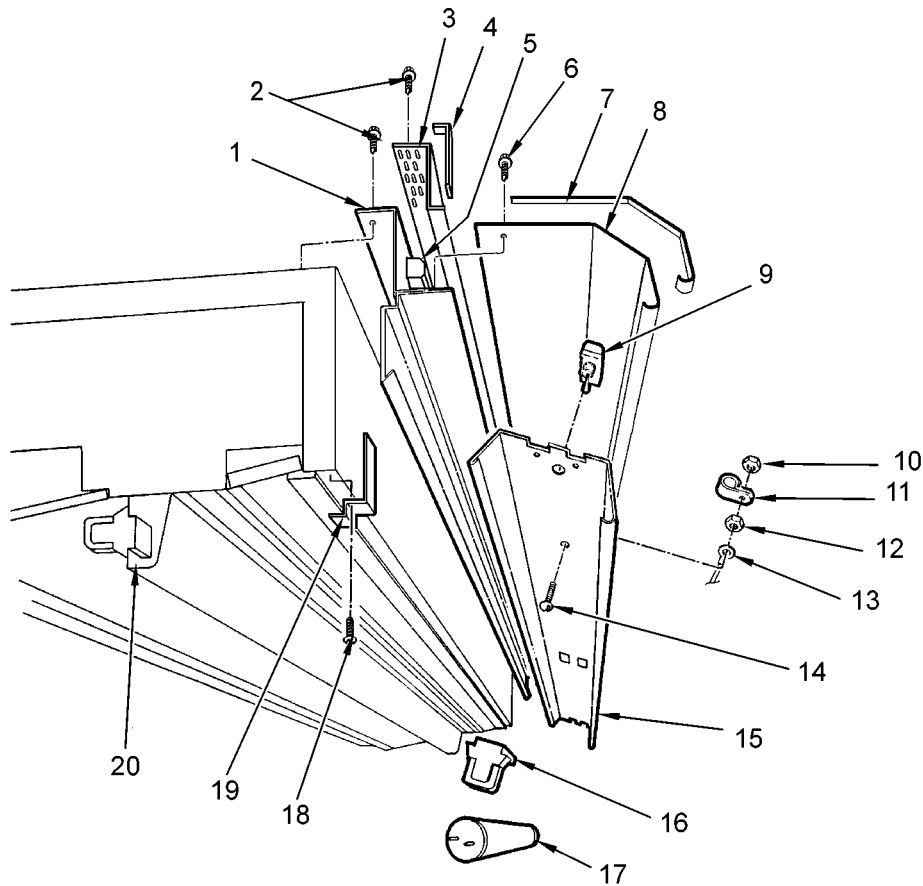


8' and 12' Merchandiser

Item	Part No.	Quantity		Description	Item	Part No.	Quantity		Description
		8'	12'				8'	12'	
*	9028487	1	-	Hood Assy.	9	5966635	1	-	Ballast, T-8 4-Lamp
*	9028488	-	1	Hood Assy.		5991030	-	2	Ballast, T-8 3-Lamp
1	5196224	1	-	Hood Ext. Weld Assy.	10	5100661	1	1	Nut
	5196225	-	1	Hood Ext. Weld Assy.	11	5106713	1	1	Clip
2	5183536	25	31	Screw	12	5100661	1	1	Nut
3	5229600	1	1	Joint Trim	13	5220621	1	1	Harness
4	9025983	1	1	Hood Canopy Backer	14	5100379	1	1	Screw
5	9025223	1	-	Front Hood	15	9026017	1	-	Light Channel
	9025224	-	1	Front Hood		9026018	-	1	Light Channel
*	9026538	1	-	Front Light Channel Assy.	16	5232279	8	12	Lampholder
*	9026539	-	1	Front Light Channel Assy.	17	----	4	6	Lamp, T-8
6	5100565	1	1	Switch	18	5111197	2	2	Screw
7	5111198	2	2	Nut	19	5205439	4	4	Screw
8	5195180	2	2	Lockwasher	20	5222048	1	1	Joint Trim



STRUCTURAL COMPONENTS - (CONT'D)  
 CANOPY ASSEMBLIES - LDFL  
 Optional Short Canopy with 800MA Lighting

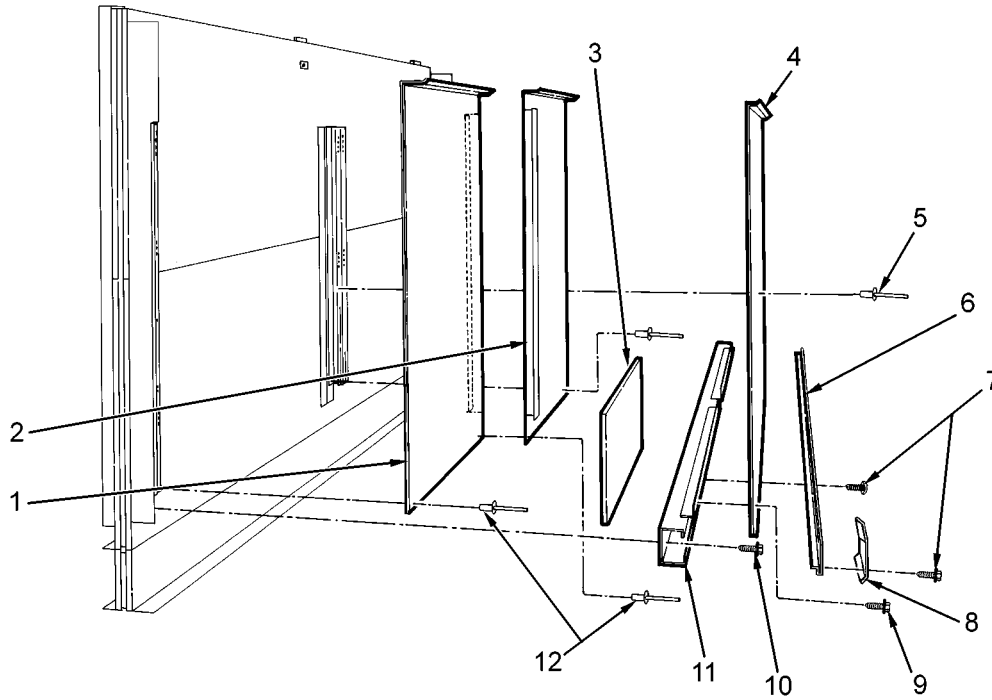


8' and 12' Merchandiser

Item	Part No.	Quantity		Description	Item	Part No.	Quantity		Description
		8'	12'				8'	12'	
*	9026553	1	-	Hood Assy.	14	5100379	1	1	Screw
*	9026554	-	1	Hood Assy.	15	9026019	1	-	Light Channel
1	5233850	1	-	Hood Ext. Weld Assy.		9026020	-	1	Light Channel
	5233851	-	1	Hood Ext. Weld Assy.	16	5614628	2	4	Lampholder, Telescoping
2	5183536	23	29	Screw		5614629	2	4	Lampholder, Stationary
3	5233846	1	-	Top Front Cladding	17	----	2	-	Lamp, 800MA 96"
	5233847	-	1	Top Front Cladding		----	-	4	Lamp, 800MA 72"
4	5234249	1	1	Joint Trim	18	5205439	4	4	Screw
5	5204769	1	2	Ballast, 800MA 2-Lamp	19	5222048	1	1	Joint Trim
	5183536	2	4	Screw	*	5958712	1	-	Top Light Channel Assy.
	5195180	2	4	Lockwasher	*	5958713	-	1	Top Light Channel Assy.
6	5183536	8	12	Screw	20	5958716	1	-	Light Channel Support
7	9025983	1	1	Hood Canopy Backer		5958717	-	1	Light Channel Support
8	9025223	1	-	Front Hood		5958714	1	-	Light Channel
	9025224	-	1	Front Hood		5958715	-	1	Light Channel
*	9026555	1	-	Front Light Channel Assy.		5049140	1	-	Ballast, 800MA 1-Lamp
*	9026556	-	1	Front Light Channel Assy.		5204769	-	1	Ballast, 800MA 2-Lamp
9	5100565	1	1	Switch		5100565	1	1	Switch
10	5100661	1	1	Nut		5614628	1	2	Lampholder, Telescoping
11	5106713	1	1	Clip		5614629	1	2	Lampholder, Stationary
12	5100661	1	1	Nut		----	1	-	Lamp, 800MA 96"
13	5220621	1	1	Harness		----	-	2	Lamp, 800MA 72"



STRUCTURAL COMPONENTS - (CONT'D)  
 DUCTS - LDFL

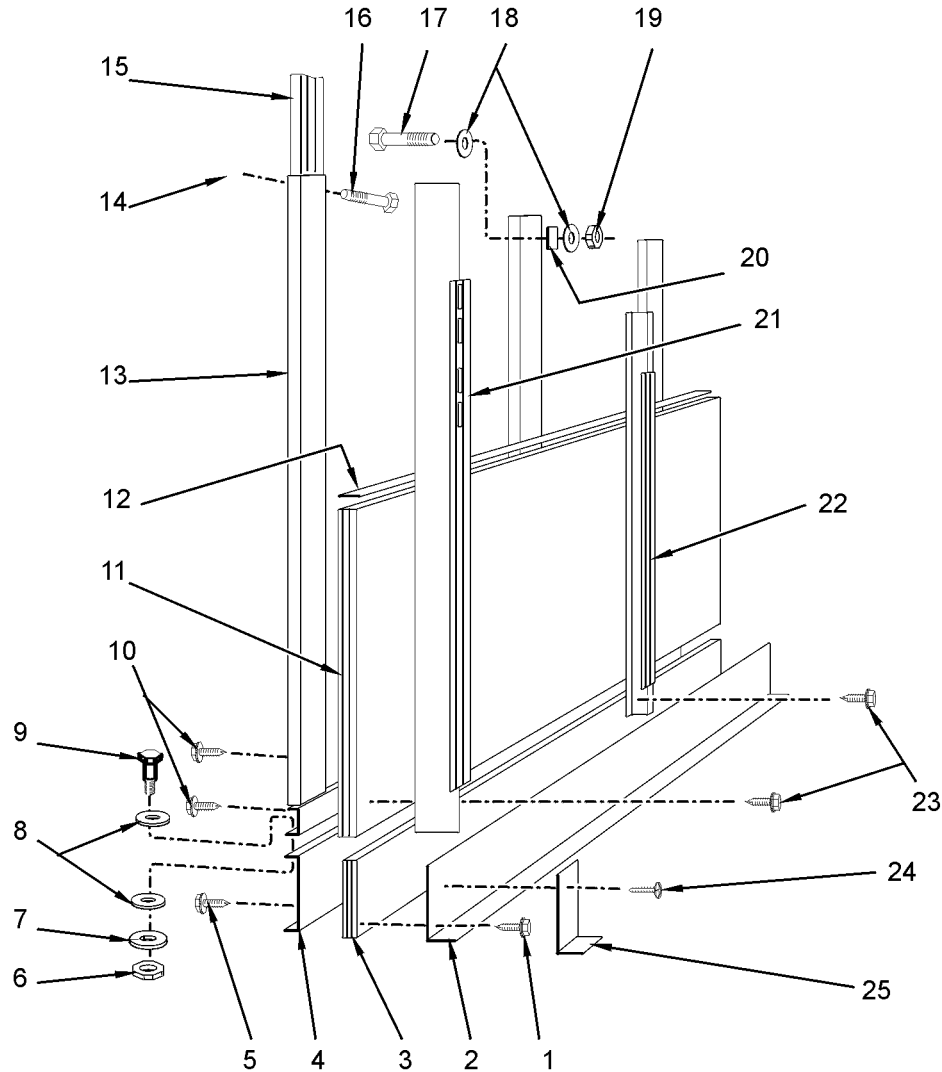


8' and 12' Merchandiser

Item	Part No.	Quantity		Description	Item	Part No.	Quantity		Description
		8'	12'				8'	12'	
1	5054166	2	3	LH Inner Support Duct	7	5111197	14	18	Screw
2	5054165	2	3	RH Inner Support Duct	8	5184497	2	2	Elec. Raceway Cover Plate
3	5054170	6	9	LH Insulation	9	5619204	2	3	Screw
	5054168	2	3	LH Top Insulation	10	5120943	6	8	Screw
	5054169	6	9	RH Insulation	11	5184500	1	1	<b>Electric Raceway Bench Assy.</b>
	5054167	2	3	RH Top Insulation					
4	5184495	2	3	Rear Duct		5184502	1	1	Electric Raceway
5	5104702	40	60	Rivet		5610652	2	2	Reinforcement Duct
6	5184498	1	1	Electric Raceway Cover	12	5120943	40	60	Screw



STRUCTURAL COMPONENTS - (CONT'D)  
 REAR UPRIGHTS AND ADD-ON BASE - LDFL



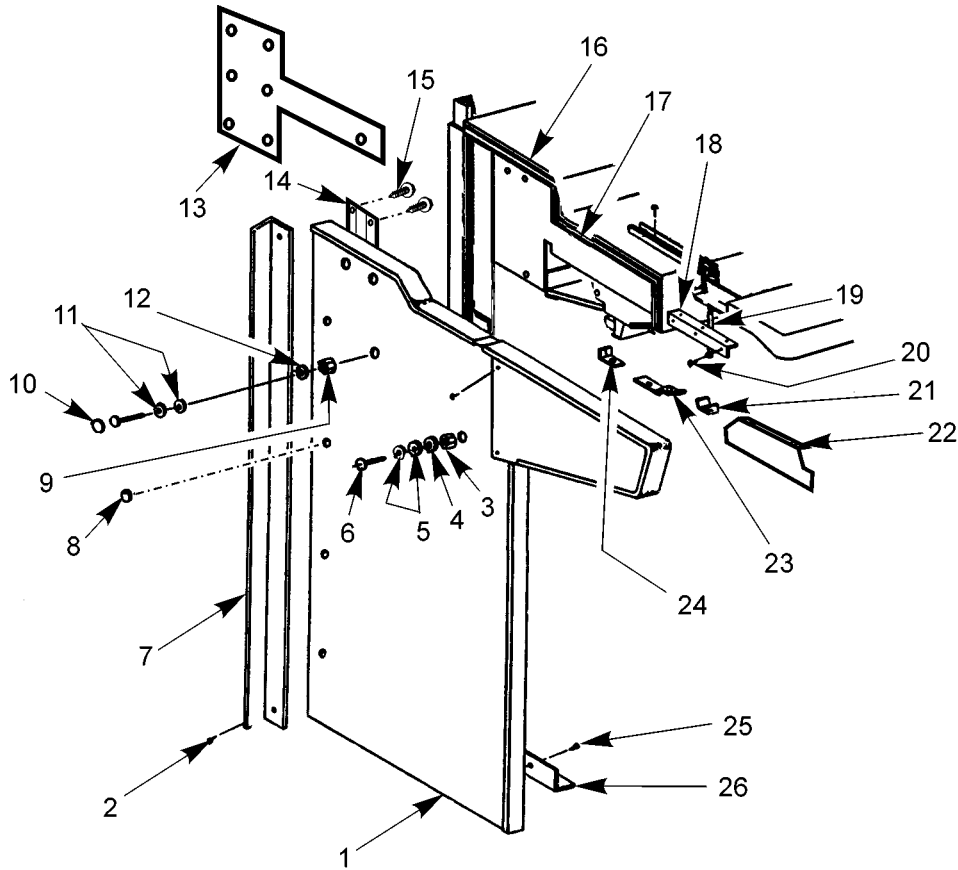
8' and 12' Merchandiser

Item	Part No.	Quantity		Description	Item	Part No.	Quantity		Description
		8'	12'				8'	12'	
*	5054944	1	-	Add-on Base Assy.	12	5107190	16	24	Sponge Rubber
*	5054945	-	1	Add-on Base Assy.	13	5184432	3	4	Rear Upright
1	1309067	12	12	Screw	14	5100634	3	4	Nut
2	5054946	1	-	Base Cladding	15	5610694	3	4	Rear Upper Inner Extension
	5054947	-	1	Base Cladding	16	5145961	3	4	Bolt
3	5054973	1	-	Base External Foam Assy.	17	5100748	1	2	Bolt
	5054974	-	1	Base External Foam Assy.	18	5100979	2	4	Washer
4	5055031	1	-	Reinforcement Channel	19	5100634	1	1	Nut
	5055032	-	1	Reinforcement Channel	20	5616645	1	1	Pull-up Plate
5	1309067	6	8	Screw	21	5054157	1	2	Center Upright Assy.
6	5100634	4	4	Nut	22	5054409	1	1	LH End Assy.
7	5101006	4	4	Lockwasher		5054408	1	1	RH End Assy.
8	5100979	8	8	Washer	23	1309067	16	16	Screw
9	5100752	4	4	Bolt	24	5205439	22	22	Screw
10	1306067	27	36	Screw	25	5184554	1	1	Base Cladding Joint Trim
11	5187510	2	-	UPR & LWR Section Assy.					
	5187511	-	2	UPR & LWR Section Assy.					





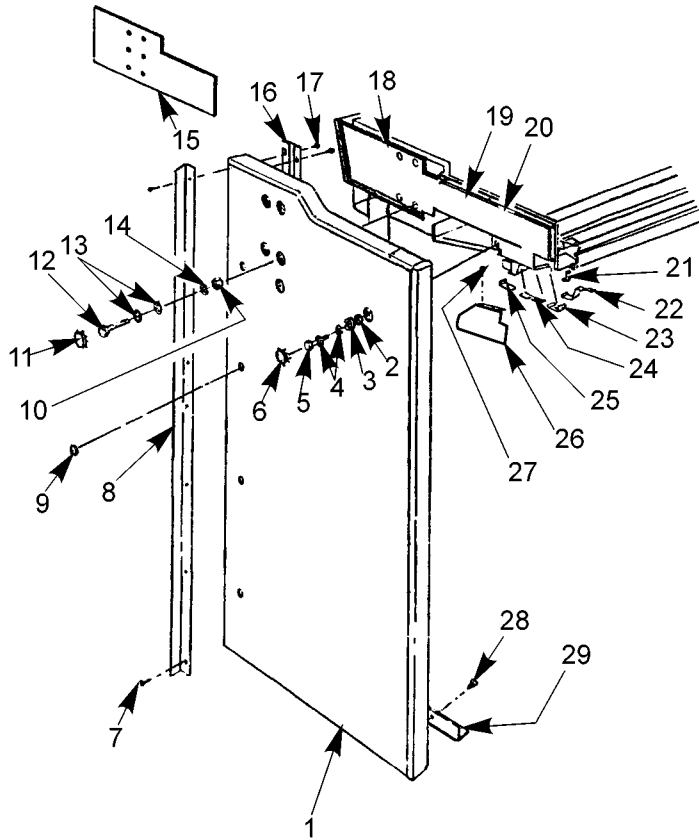
**STRUCTURAL COMPONENTS - (CONT'D)**  
**PATCH ENDS, PARTITIONS AND DIVIDERS - LDFL**  
**Solid Patch Ends, Standard Hood Boxed**



Item	Part No.	Qty.	Description	Item	Part No.	Qty.	Description
*	9022298	1	LH Contoured Box End Assy., Ptd. w/MB SS Liner	9	5100643	4	Nut, 1/2"-13
*	9022297	1	RH Contoured Box End Assy., Ptd. w/MB SS Liner	10	5100913	6	Plug Button, 1 3/8"
1	9030198	1	LH Contoured Box End Bench Assy.	11	5100982	8	Washer, 1/2"
	9030197	1	RH Contoured Box End Bench Assy.	12	5628631	4	Lockwasher, 1/2"
	9030815	1	LH Cont. Box End Panel, Ptd.	13	5089402	1	End Spacer
	9030814	1	RH Cont. Box End Panel, Ptd.	14	5183473	1	Inside Cooler & End Joint Trim
	9030813	1	LH Cont. Box Liner, MB SS	15	5205439	18	Screw
	9030812	1	RH Cont. Box Liner, MB SS	16	5107190	A/R	Sponge Rubber, 1/2"
2	5205439	18	Screw	17	5145225	A/R	Ethofoam Gasket
3	5100634	1	Nut, 3/8"-16	18	5617747	1	Upper Panel End Trim
4	5101006	1	Lockwasher, 3/8"	19	5210999	1	Front Cladding End Trim
5	5100979	2	Washer, 3/8"	20	5205439	6	Screw
6	5149341	1	Machine Screw, 3/8"-16	21	5186734	1	Htr. Wire Enclosure End Trim
7	5183475	1	Outside Cooler & End Joint Trim	22	9030254	1	LH Hood End Close-off
8	5100918	4	Plug Button, 5/8"		9030253	1	RH Hood End Close-off
				23	5186732	1	Front Grid End Trim
				24	5089303	1	Rear Grid End Trim
				25	5111030	2	Screw
				26	5613835	1	Floor Angle



STRUCTURAL COMPONENTS - (CONT'D)  
 PATCH ENDS, PARTITIONS AND DIVIDERS - LDFL  
 Solid Patch Ends, Short Hood Boxed

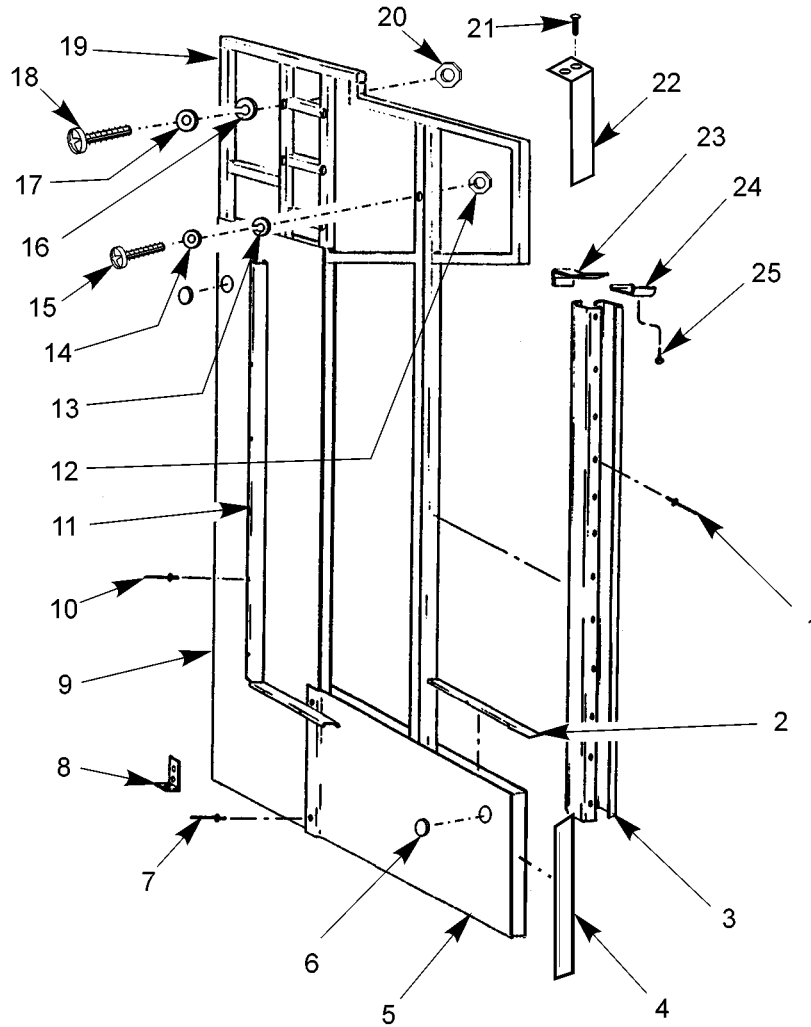


Item	Part No.	Qty.	Description
	9028672	1	RH Box End Bench Assy., BRT SS w/BRT SS Liner
	9028673	1	LH Box End Bench Assy., BRT SS w/BRT SS Liner
	9030755	1	RH Box End Bench Assy., BRT SS w/MB SS Liner
	9030756	1	LH Box End Bench Assy., BRT SS w/MB SS Liner
	9030814	1	RH End Panel, Ptd.
	9030815	1	LH End Panel, Ptd.
	9030816	1	RH End Panel, BRT SS
	9030817	1	LH End Panel, BRT SS
	9030812	1	RH End Liner, MB SS
	9030813	1	LH End Liner, MB SS
	9030810	1	RH End Liner, BRT SS
	9030811	1	LH End Liner, BRT SS
2	5100634	1	Nut, 3/8"-16
3	5101006	1	Lockwasher, 3.8"
4	5100979	2	Washer, 3/8"
5	5149341	1	Machine Screw, 3/8"-16
6	5105054	1	Plug Button. 1"
7	5205439	18	Screw
8	5183475	1	OUT Cooler & End Joint Trim
9	5100918	4	Plug Button
10	5100643	4	Nut, 1/2"-13
11	5100913	5	Plug Button, 1 3/8"
12	5221251	4	Machine Screw, 1/2"-13
13	5100982	8	Washer, 1/2"
14	5628631	4	Lockwasher, 1/2"
15	5089402	1	End Spacer
16	5183474	1	INS Cooler & End Joint Trim
17	5205439	18	Screw
18	5107190	A/R	Sponge Rubber, 1/2"
19	5145225	A/R	Ethofoam Gasket
20	5618908	6	Foam Spline Fastener
21	5210994	1	Front Cladding Joint Trim
22	5232142	1	Light Channel Joint Trim
23	5186734	1	Htr. Wire Enclosure End Trim
24	5186732	1	Front Grid End Trim
25	5089303	1	Rear Grid End Trim
26	9030227	1	LH Canopy Close-off, Ptd.
	9035381	1	LH Canopy Close-off, BRT SS
	9035383	1	LH Canopy Close-off, MB SS
	9030226	1	RH Canopy Close-off, Ptd.
	9035380	1	RH Canopy Close-off, BRT SS
	9035382	1	RH Canopy Close-off, MB SS
27	5120943	2	Screw
28	5111030	2	Screw
29	5613835	1	Floor Angle

Item	Part No.	Qty.	Description
*	9022291	1	RH Box End Assy., Ptd. w/MB SS Liner (Short Hd.)
*	9022292	1	LH Box End Assy., Ptd. w/MB SS Liner (Short Hd.)
*	9022293	1	RH Box End Assy., Ptd. w/BRT SS Liner (Short Hd.)
*	9022294	1	LH Box End Assy., Ptd. w/BRT SS Liner (Short Hd.)
*	9022295	1	RH Box End Assy., BRT SS w/BRT SS Liner (Short Hd.)
*	9022296	1	LH Box End Assy., BRT SS w/BRT SS Liner (Short Hd.)
*	9030753	1	RH Box End Assy., BRT SS w/MB SS Liner (Short Hd.)
*	9030754	1	LH Box End Assy., BRT SS w/MB SS Liner (Short Hd.)
1	9030197	1	RH Box End Bench Assy., Ptd. w/MB SS Liner
	9030198	1	LH Box End Bench Assy., Ptd. w/MB SS Liner
	9030229	1	RH Box End Bench Assy., Ptd. w/BRT SS Liner
	9030230	1	LH Box End Bench Assy., Ptd. w/BRT SS Liner



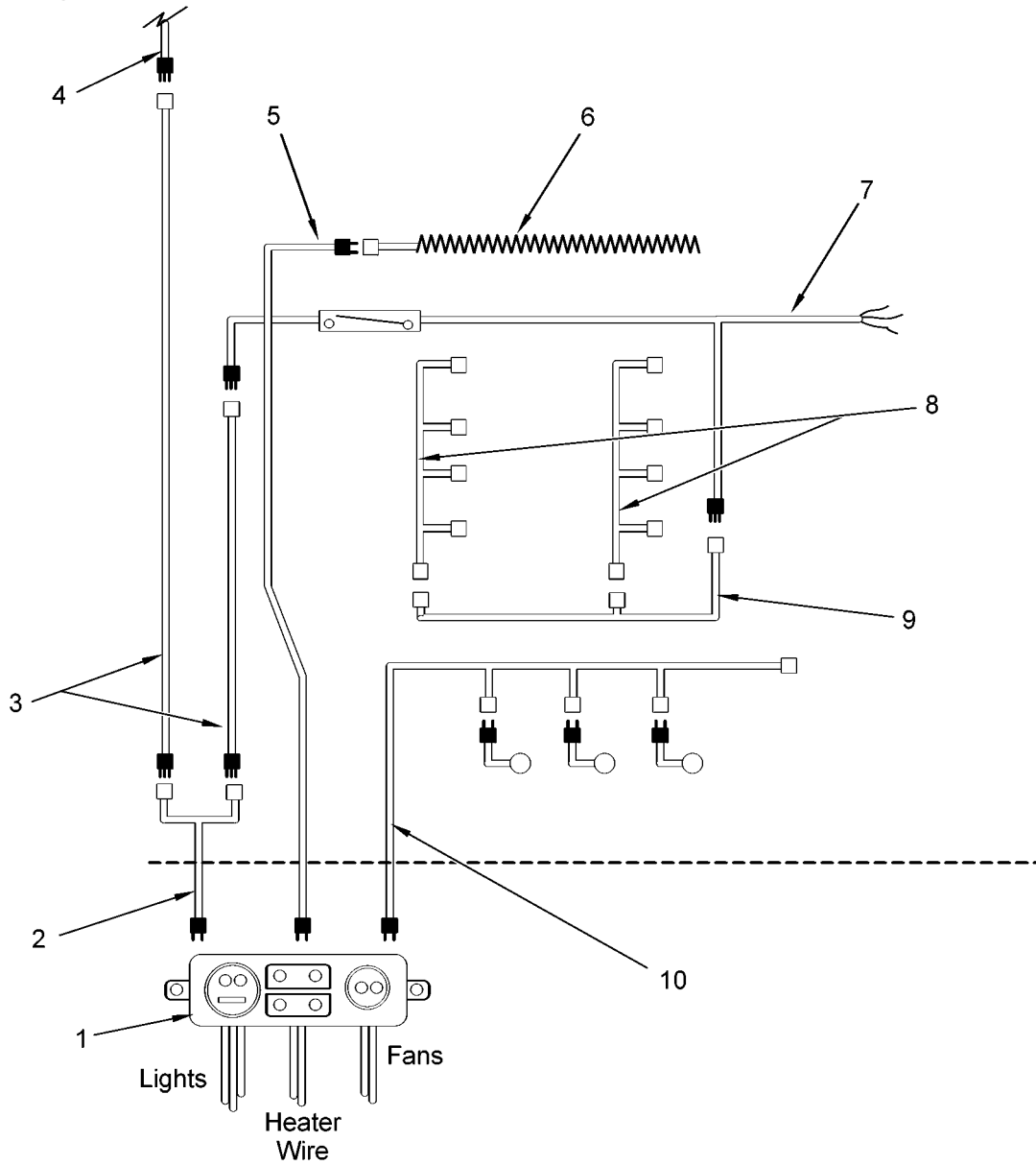
STRUCTURAL COMPONENTS - (CONT'D)  
 PATCH ENDS, PARTITIONS AND DIVIDERS - LDFL  
 Partition, 13" Front



Item	Part No.	Qty.	Description	Item	Part No.	Qty.	Description
*	<b>9030683</b>	<b>1</b>	<b>Partition Assy., 13" Front</b>	11	9030689	1	Vertical Trim Rail
1	5179715	12	Rivet	12	5100634	1	Nut, 3/8"-16
2	9030691	1	Front Trim Rail	13	5101006	1	Lockwasher, 3/8"
	5104702	4	Rivet (2 per side of rail)	14	5100979	1	Washer, 3/8"
3	9030688	2	Trim Post	15	5100748	1	Machine Screw, 3/8"-16
4	9030690	1	Lower Trim Rail	16	5628631	4	Lockwasher, 1/2"
	5104702	4	Rivet (2 per side of rail)	17	5100982	4	Washer, 1/2"
5	9030687	1	LH Lower Panel	18	5625256	4	Machine Bolt, 1/2"-13
	9030686	1	RH Lower Panel	19	9030685	1	Frame Assy.
6	5100913	4	Plug Button, 1 3/8"	20	5100643	4	Nut, 1/2"-13
7	5104957	3	Rivet	21	5183536	2	Screw
8	5940119	1	Partition Hold Down Bracket	22	9031345	1	Top Front Joint Trim
	1309067	2	Screw	23	5940120	1	Front Grid Joint Trim
9	5208337	1	LH Vertical Panel	24	5940121	1	Htr. Wire Enclosure Joint Trim
	5208336	1	RH Vertical Panel	25	5058099	2	Screw
10	5104957	16	Rivet (8 per side of rail)				



**ELECTRICAL SYSTEM COMPONENTS**  
**WIRING HARNESSSES - LDFL**  
**Wiring and Components**

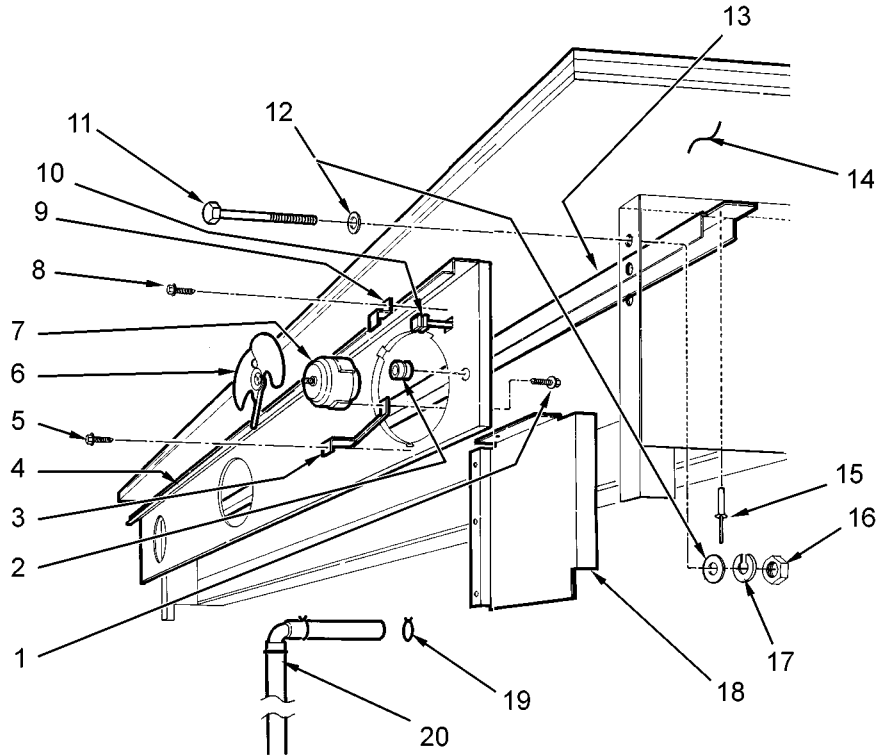


**8' and 12' Merchandiser**

Item	Part No.	Quantity		Description	Item	Part No.	Quantity		Description
		8'	12'				8'	12'	
1	5199459	1	1	Input Harness, 115V	7	5220493	1	1	Shelf Light Harness
2	5220500	1	1	Light "Y" Harness	8	5220487	2	3	Shelf Light Harness
3	5220491	2	2	Light Harness	9	5220485	1	-	Shelf Light Harness
4	5220493	1	1	Light Harness		5220486	-	1	Shelf Light Harness
5	5123837	1	1	Heater Wire Harness	10	5199415	1	-	Fan Harness
6	5124818	1	-	Heater Wire		5199437	-	1	Fan Harness
	5124819	-	1	Heater Wire					



ELECTRICAL SYSTEM COMPONENTS - (CONT'D)  
 FAN SYSTEMS - LDFL

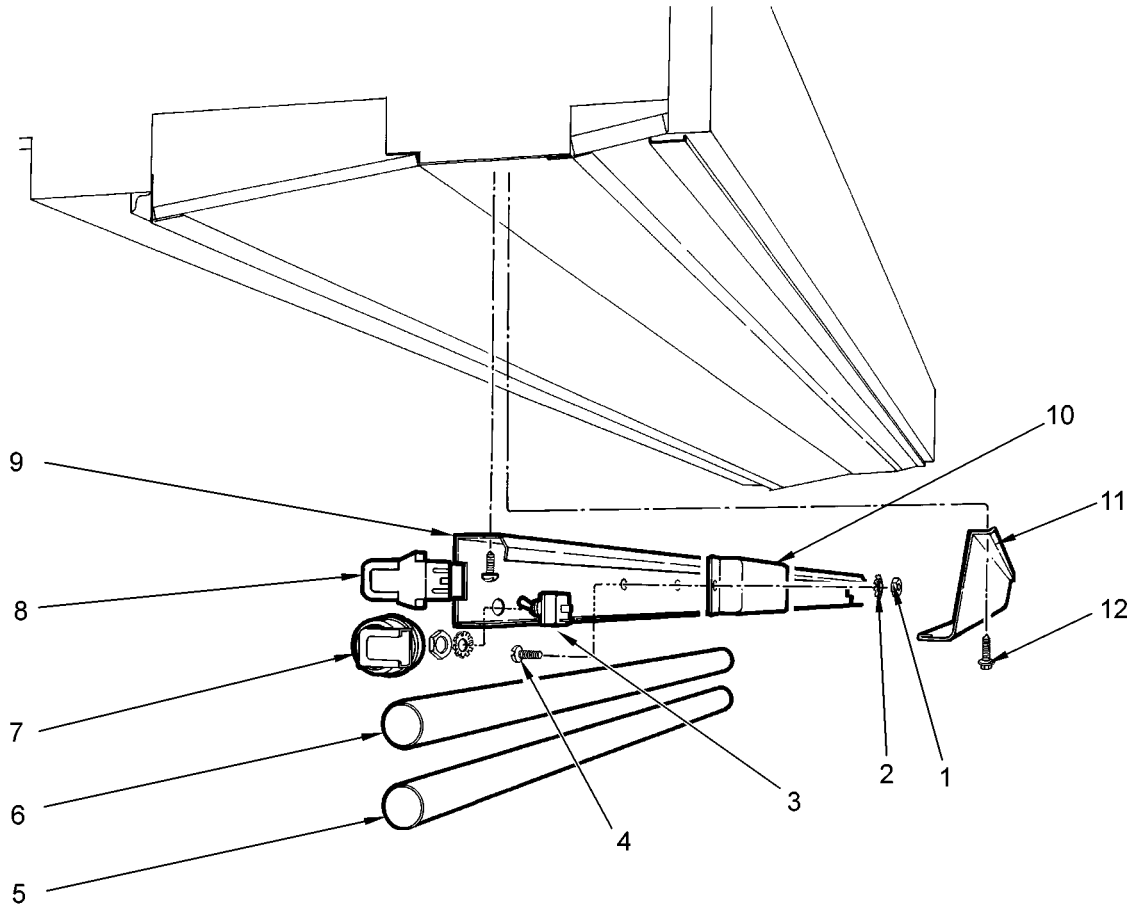


8' and 12' Merchandiser

Item	Part No.	Quantity		Description	Item	Part No.	Quantity		Description
		8'	12'				8'	12'	
*	5054215	1	-	Fan Panel Assy.	11	5625256	2	2	Bolt
*	5054216	-	1	Fan Panel Assy.		5100748	4	4	Screw
1	5183536	9	12	Screw	12	5100982	4	4	Washer
2	5123674	3	4	Strain Relief		5100979	8	8	Washer
3	5205112	9	12	Fan Motor Bracket	13	5184581	1	1	Fan Panel Support Channel
4	5238270	1	-	Fan Panel	14	<b>5184569</b>	1	-	<b>Fan Panel Close-off Assy.</b>
	5238271	-	1	Fan Panel		<b>5184570</b>	-	1	<b>Fan Panel Close-off Assy.</b>
5	5224128	9	12	Screw	15	5105037	4	4	Rivet
6	5104858	3	4	Fan Blade, 8.75" 31° 5B	16	5100643	2	2	Nut
	5187551	3	4	Opt. ECM Fan Blade, 8.75" 30° 5B		5100634	4	4	Nut
7	5243498	3	4	Fan Motor, 9W	17	5101009	2	2	Lockwasher
	9025000	3	4	Opt. ECM Fan Motor, 12W	18	5184542	1	1	LH Fan Panel Close-off
8	5183536	3	4	Screw		5184541	1	1	RH Fan Panel Close-off
9	5120359	3	4	Clip	19	5619774	4	4	Hose Clamp
10	5199415	1	-	Harness	20	<b>5184419</b>	1	1	<b>Drain Hose Assy.</b>
	5199437	-	1	Harness		5147702	2	2	Tube Clamp
						<b>5054949</b>	1	1	<b>External Drain Assy.</b>



ELECTRICAL SYSTEM COMPONENTS - (CONT'D)  
TOP LIGHT ASSEMBLIES - LDFL

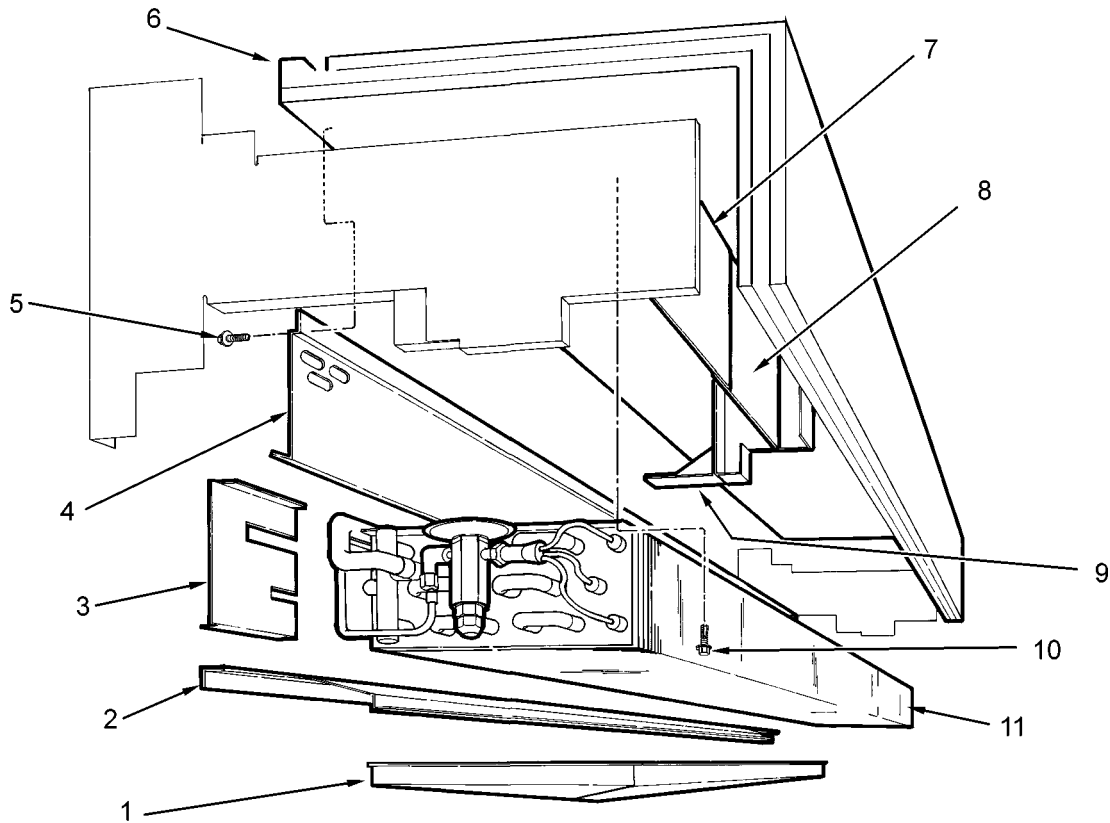


8' and 12' Merchandiser

Item	Part No.	Quantity		Description	Item	Part No.	Quantity		Description
		8'	12'				8'	12'	
*	5991137	1	-	Top Light Channel Assy.	9	5190170	1	-	Light Channel
*	5991138	-	1	Top Light Channel Assy.		5190171	-	1	Light Channel
1	5111198	3	5	Nut	10	5991030	1	1	Ballast, 3-Lamp
2	5195180	5	9	Lockwasher		5220493	1	1	Harness
	5100973	2	2	Washer		5211734	2	2	Insulated Flag Connector
3	5100565	1	1	Switch		5222014	1	1	Light Channel Joint Trim
4	5111197	3	5	Screw	11	5089985	1	-	Light Channel & Lower Grid Support
5	----	2	3	Lamp, T-8		5089986	-	1	Light Channel & Lower Grid Support
6	5232536	2	3	Lamp Shield	12	5183536	32	51	Screw
7	5235709	4	6	Lampholder Cap					
8	5232279	4	6	Lampholder					



REFRIGERATION SYSTEM COMPONENTS  
COIL ASSEMBLIES - LDFL

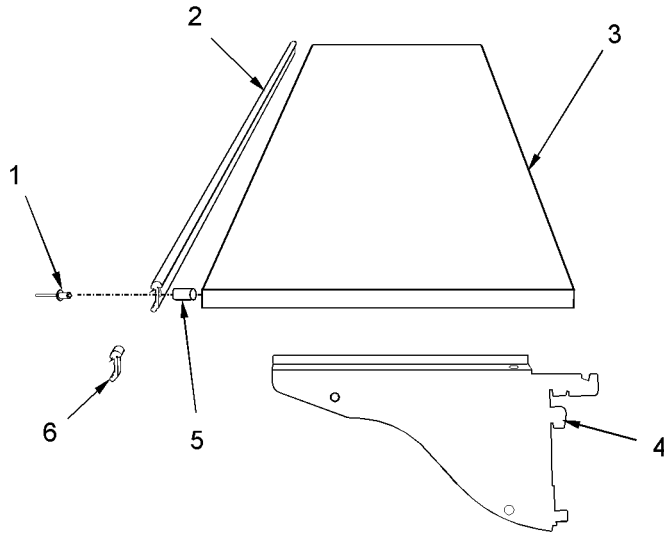


8' and 12' Merchandiser

Item	Part No.	Quantity		Description	Item	Part No.	Quantity		Description
		8'	12'				8'	12'	
1	5186750	1	-	Drain Pan Assy.	6	5180723	1	-	Top Shelf Foam Assy.
	5186751	-	1	Drain Pan Assy.		5180724	-	1	Top Shelf Foam Assy.
	5180690	3	5	Front Support Clip		7	5055733	8	12
2	5055093	1	-	Coil & Drain Pan Close-off	8	5183596	3	5	Front Support Gusset
	5055094	-	1	Coil & Drain Pan Close-off		9	5183595	3	5
3	5186742	1	1	LH Coil End Close-off	10	5183536	74	94	Screw
	5183599	1	1	RH Coil End Close-off		11	5180698	1	-
4	5183597	1	-	Rear Coil Restrictor	5180699		-	1	Coil Assy.
	5183598	-	1	Rear Coil Restrictor	5184583	1	-	Lower Rear Close-off	
	1309067	26	32	Screw	5184584	-	1	Lower Rear Close-off	
									Bench Assy.
									Bench Assy.



OPTIONAL CASE ACCESSORIES  
 SHELF ASSEMBLIES - LDFL  
 Optional 48" Wide Shelves w/o Lights

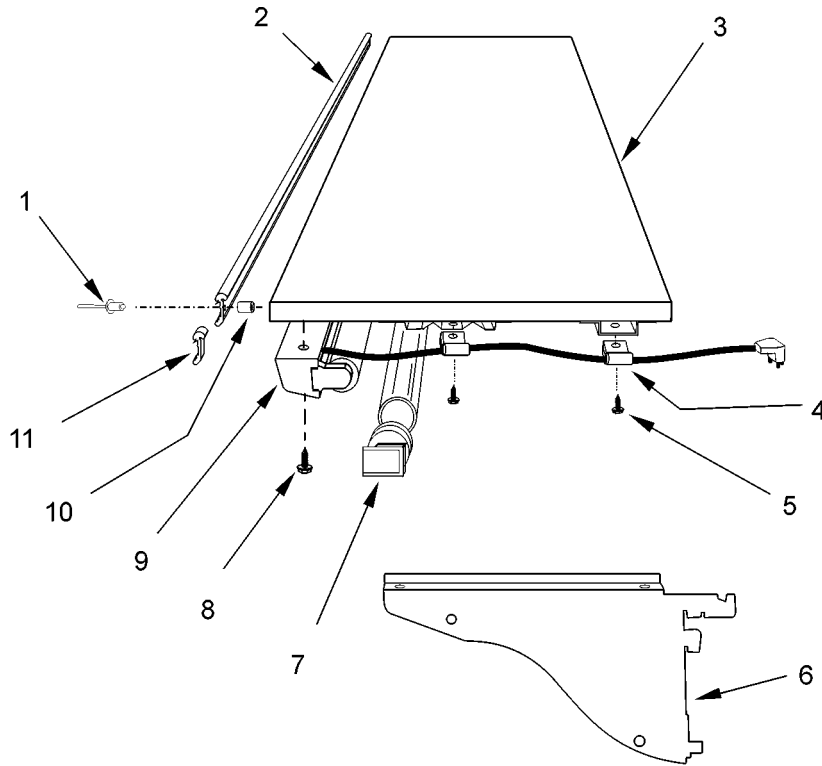


Item	Part No.	Qty.	Description	Item	Part No.	Qty.	Description
*	5619374	1	18" x 48" Shelf Assy., Ptd.	*	5237623	1	22" x 48" Shelf Bench Assy., MB SS
*	5619375	1	20" x 48" Shelf Assy., Ptd.				
*	5185961	1	22" x 48" Shelf Assy., Ptd.	3	5220613	1	18" x 48" Shelf, Ptd.
*	5958906	1	22" x 48" Shelf Assy., MB SS		5220614	1	20" x 48" Shelf, Ptd.
1	5144974	4	Rivet		5220615	1	22" x 48" Shelf, Ptd.
	5104702	4	Rivet (MB SS shelf only)		5958907	1	22" x 48" Shelf, MB SS
2	5236879	1	Narrow Card Molding, 48"	4	5088412	1	RH Shelf Bracket, 18" Ptd.
*	5184620	1	18" x 48" Shelf Bench Assy., Ptd.		5088413	1	LH Shelf Bracket, 18" Ptd.
*	5184621	1	20" x 48" Shelf Bench Assy., Ptd.		5185812	1	RH Shelf Bracket, 20" Ptd.
*	5198722	1	22" x 48" Shelf Bench Assy., Ptd.		5185813	1	LH Shelf Bracket, 20" Ptd.
					5185814	1	RH Shelf Bracket, 22" Ptd.
					5185815	1	LH Shelf Bracket, 22" Ptd.
				5	5127438	4	Spacer (exc. MB SS shelf)
				6	5941919	1	Card Molding Joint Trim





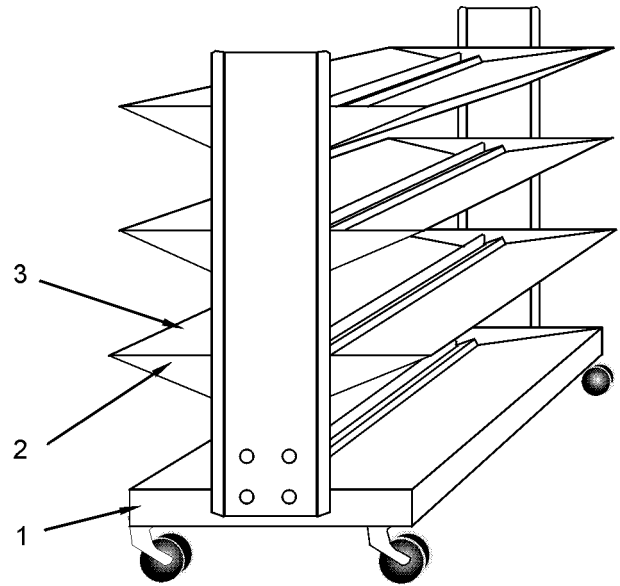
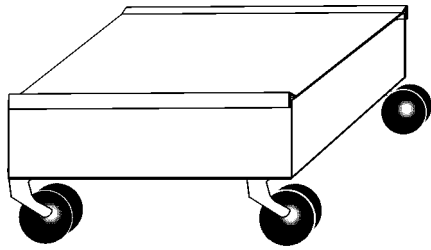
OPTIONAL CASE ACCESSORIES - (CONT'D)  
 SHELF ASSEMBLIES - LDFL  
 Optional 48" Wide Shelves w/ T-8 Lights



Item	Part No.	Qty.	Description	Item	Part No.	Qty.	Description
*	5991103	1	20" Lighted Shelf Assy., Ptd.		5185815	1	LH Shelf Bracket, 20" Ptd.
*	5991104	1	22" Lighted Shelf Assy., Ptd.		5100212	2	Screw
1	5144974	4	Rivet	7	5637996	1	Lamp
2	5236879	1	Narrow Card Molding, 48"		5981627	2	Lampshield Cap
3	5220614	1	20" x 48" Shelf, Ptd.	8	5619204	2	Screw
	5220615	1	22" x 48" Shelf, Ptd.	9	5991055	1	Light Channel Assy., Ptd.
4	5100902	1	Clamp		5220488	1	Shelf Harness
5	5183536	3	Screw		5232279	2	Lampholder w/ 12" Lead
6	5185812	1	RH Shelf Bracket, 20" Ptd.		5991029	1	T-8 Ballast, 2-Lamp
	5185813	1	LH Shelf Bracket, 20" Ptd.	10	5127438	4	Spacer
	5185814	1	RH Shelf Bracket, 22" Ptd.	11	5941919	1	Card Molding Joint Trim



OPTIONAL CASE ACCESSORIES - (CONT'D)  
MILK DOLLY AND EGG CART



**Optional Two-Stack Milk Dolly**

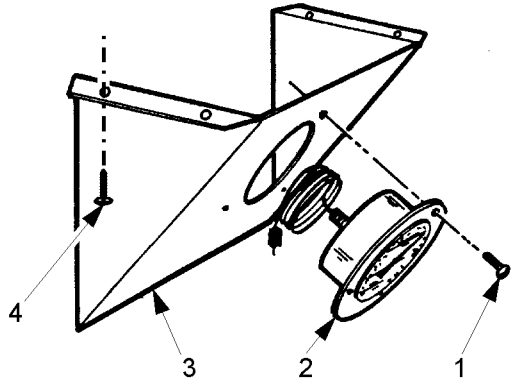
Item	Part No.	Qty.	Description
*	5184306	1	Two-Stack Milk Dolly Assy.
-	5184720	1	Frame Weld Assy.
-	5184721	1	Upper Panel
-	5184361	4	Caster
-	5100982	4	Washer, 1/2"
-	5101009	4	Lockwasher, 1/2"
-	5100643	4	Nut, 1/2"-13

**Optional Egg Cart with Shelves**

Item	Part No.	Qty.	Description
*	5186608	1	27" Egg Cart Assy.
1	5186609	1	27" Base Assy.
-	5120943	18	#7 x 1/2" Tappit Screw
-	5103996	6	#8 Lockwasher
2	5197222	6	Shelf Bracket Assy.
-	5626215	1	Outer Support Plate
-	5197223	1	RH Bracket
-	5197224	1	LH Bracket
3	5186596	6	Front Shelf Assy.
-	5186597	1	Shelf Weld Assy.
-	5186599	1	Basket Back Stop
-	5120943	5	#7 x 1/2" Tappit Screw

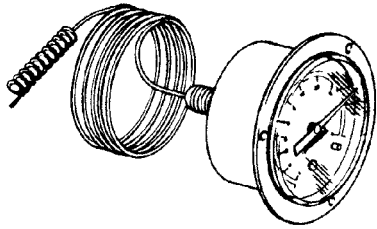


## OPTIONAL CASE ACCESSORIES - (CONT'D) THERMOMETERS

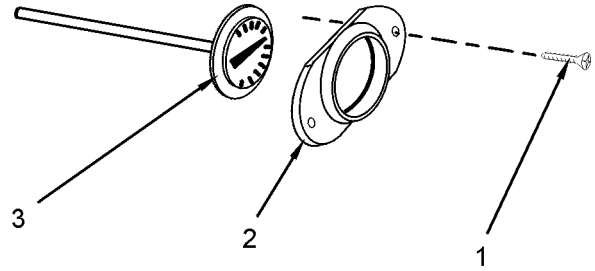


### 2" Dial Thermometers

Item	Part No.	Qty.	Description
*	5081504	1	Thermometer Assembly
1	5111242	2	Screw
2	5204006	1	2" Dial Thermometer
3	5204762	1	Thermometer Housing
4	5199134	4	Screw

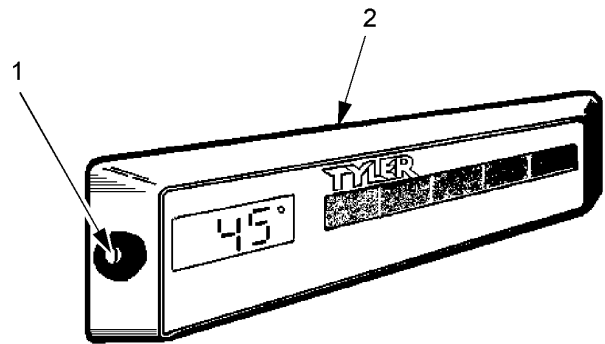


Item	Part No.	Qty.	Description
-	5204006	1	2" Dial Thermometer



### 1" Dial Thermometer

Item	Part No.	Qty.	Description
*	5980450	1	Thermometer Assembly
1	5319883	2	Screw
2	----	1	Mounting Ring (furnished with thermometer)
3	5203829	1	1" Dial Thermometer



### Digital Solar Thermometer

Item	Part No.	Qty.	Description
*	5230908	1	Digital Thermometer Assy., °F
1	5230884	2	Screw
2	5239500	1	Digital Thermometer, °F