

The N5D series narrow multi-deck merchandiser provides a narrow depth footprint, when space in aisles and behind service cases is a premium. These remote cases are great for displaying dairy, deli and beverages. This case is also available in a self-contained model, the N5DSC (see the following page).



Model N5D shown

Features & Benefits

- Energy-efficient copper tube and aluminum fin coils.
- Double row of energy-efficient T8 canopy lights.
- Hinged light channel allows easy access to ballasts.
- Solid steel base adds strength and durability.
- Easily removable interior components for quicker cleaning.
- Fan assembly design allows access to coil and drain pan.
- Off-cycle defrost.

Options

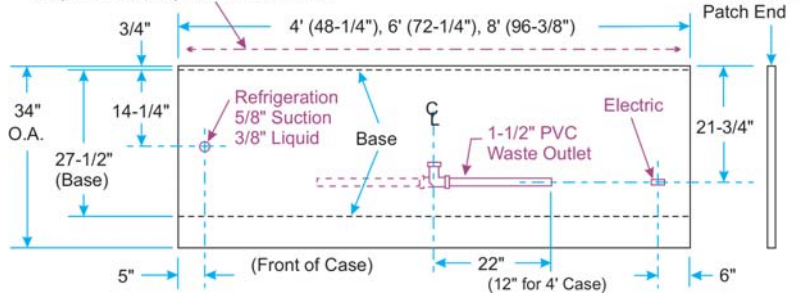
- ECM fan motors for additional energy savings.
- Energy-efficient T8 shelf lighting with remote ballasts for greater product illumination.
- 20" deep lighted or unlighted shelves.
- 3 or 6 position shelf brackets for varied shelf display angles.

Specifications are subject to engineering changes without notice.

Model	Case Length	Description	Capacity in Cubic Feet*
N5D	4' • 6' • 8'	Narrow Multi-Deck, standard coil	27.9 • 41.8 • 55.7
N5DH	4' • 6' • 8'	Low Front, Narrow Multi-Deck, standard coil	31.4 • 47.0 • 62.7
N5DL	4' • 6' • 8'	Deep Well, Narrow Multi-Deck, standard coil	31.4 • 47.0 • 62.7

* Cubic capacity is based on four rows of 20" shelves.

Allow a 3" SPACE between the back of this case and the store wall, other cases, or coolers to minimize possible condensation problems. FORCED VENTILATION may be necessary in some situations.



Optional Accessories



Patch ends with glass inserts promote all-around product visibility and illumination.

