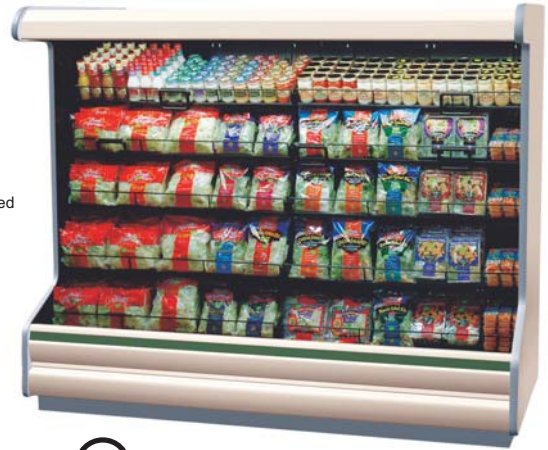


N6D & N6DHPA vertical multi-deck merchandisers offer maximum product exposure and merchandising options for your produce displays. These versatile cases can also be used to display dairy, deli, and beverage products.



Model N6DL8 shown with customer supplied rack system.

High Performance TC Coil™

High Performance (HP) Merchandisers feature our patented TC Coil™ design, which represents a major technology breakthrough for the commercial refrigeration industry. Developed jointly by Carrier Corporation and Tyler, the TC Coil™ enables HP merchandisers to operate more efficiently, providing energy savings that allow faster payback periods for food retailers.

Note: For more information about Tyler high performance display merchandisers featuring TC Coil™, go to the Technologies section of this catalog on page 8.

Features & Benefits

- Energy-efficient copper tube and aluminum fin coils.
- Double row of energy-efficient T8 canopy lights.
- Hinged light channel allows easy access to ballasts.
- Solid steel base adds strength and durability.
- Easily removable interior components for quicker cleaning.
- Fan assembly design allows access to coil and drain pan.
- Off-cycle defrost.

Options

- ECM fan motors for additional energy savings.
- Energy-efficient T8 nose light or T8 shelf lighting with remote ballasts for greater product illumination.
- Multiple depth shelving alternatives.
- 3 or 6 position shelf brackets for varied shelf display angles.
- Peg bar display systems.
- Electric or gas defrost. (N6D cases only)

Specifications are subject to engineering changes without notice.

Model	Case Length	Description	Capacity in Cubic Feet*
N6DL	4' • 6' • 8' • 12'	18" Front, Multi-Deck Bulk Produce, standard coil	37.4 • 56.1 • 74.7 • 112.1
N6DM	4' • 6' • 8' • 12'	22" Front, Multi-Deck Bulk Produce, standard coil	37.4 • 56.1 • 74.7 • 112.1
N6DH	6' • 8' • 12'	26" Front, Multi-Deck Bulk Produce, standard coil	56.1 • 74.7 • 112.1
N6DHPLA	4' • 6' • 8' • 12'	18" Front, Multi-Deck Bulk Produce, TC Coil	37.4 • 56.1 • 74.7 • 112.1
N6DHPMA	4' • 6' • 8' • 12'	22" Front, Multi-Deck Bulk Produce, TC Coil	37.4 • 56.1 • 74.7 • 112.1
N6DHPHA	6' • 8' • 12'	26" Front, Multi-Deck Bulk Produce, TC Coil	56.1 • 74.7 • 112.1

* Cubic capacity is based on four rows of 22" shelves.



IN ACCORDANCE WITH NSF SANITATION PROCEDURES

