

NFD Fixed Curved Glass



NFD service merchandisers provide forced air, lower-coil cooling that maximizes product integrity. A single sealed triple-pane front glass offers seamless front viewing while increasing the case's insulating factor, providing an energy-efficient alternative to lift glass versions.

Features & Benefits

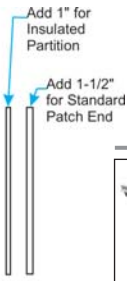
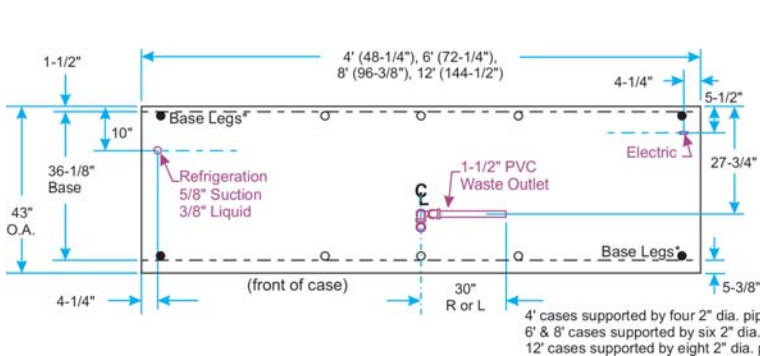
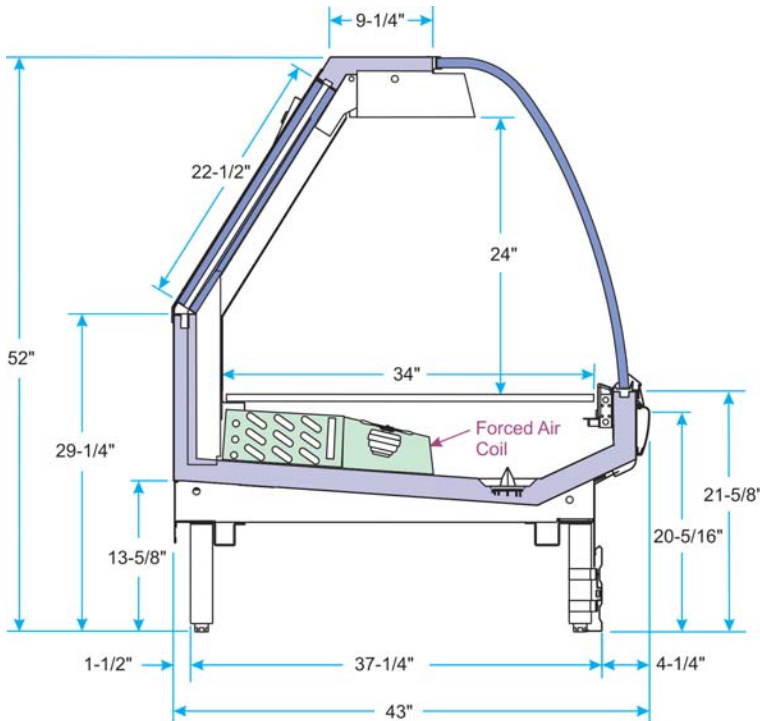
- ♦ Energy-efficient copper tube and aluminum fin coils.
- ♦ Single row of T8 top lights for increased product illumination.
- ♦ 22-1/2" clear sliding rear doors for easy access to interior.
- ♦ Easily removable interior components for quicker cleaning.
- ♦ Pipe leg base and removable kickplate facilitate cleaning under the case.
- ♦ Off-cycle defrost.

Options

- ♦ Glass windows on patch end panels.
- ♦ ECM fan motors for additional energy savings.
- ♦ A second row of T8 top lights with remote electronic ballast.
- ♦ White powder-coated display screens.
- ♦ Lighted or unlighted stainless steel mezzanine shelves.
- ♦ Step trays and food pans.
- ♦ Scale shelves.

Specifications are subject to engineering changes without notice.

Model	Case Length	Description	Capacity in Cubic Feet
NFD	4' • 6' • 8' • 12'	Fixed Curved Front Glass with forced air standard coil	15.4 • 23.0 • 30.7 • 46.1



Optional Accessories



Stainless steel mezzanine shelves help to maximize the product viewing area and can be ordered with or without lights.



Scale Shelves add more functionality to the work area.

Dairy / Deli