

NMF, NMFG



Model NMFG6 shown



NMF and NMFG single-deck merchandisers are perfect for quick and easy stocking of products. The NMF's wide open display area allows efficient presentation of packaged frozen food items. For additional product viewing opportunities, choose the NMFG glass front merchandiser.

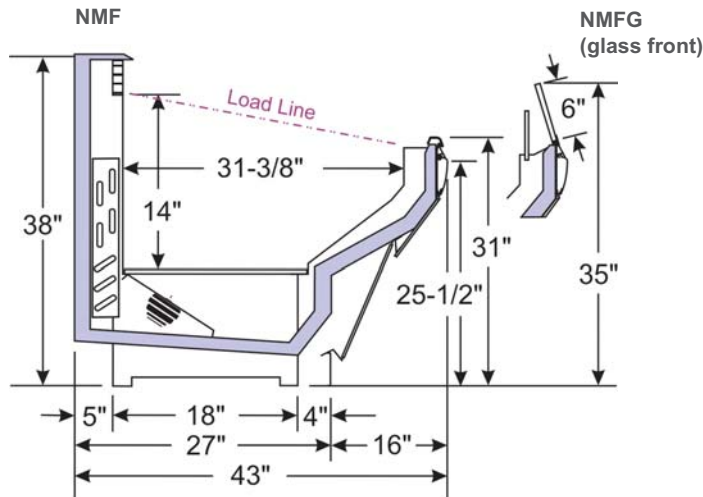
Features & Benefits

- ♦ Energy-efficient copper tube and aluminum fin coils.
- ♦ NMFG models have 6" angled clear front glass that enhances product visibility.
- ♦ Solid steel base adds strength and durability.
- ♦ Easily removable interior components for quicker cleaning.
- ♦ Fan assembly design allows access to coil and drain pan.
- ♦ Electric defrost.

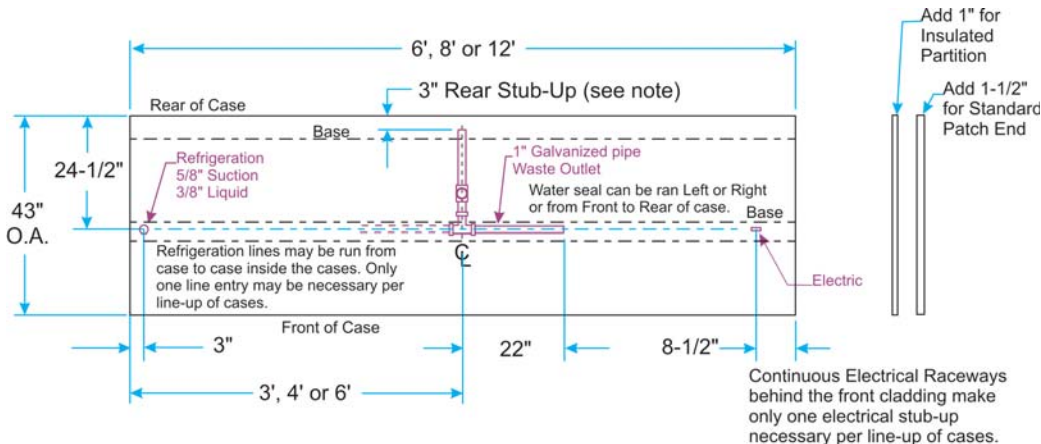
Options

- ♦ ECM fan motors for additional energy savings.
- ♦ Adjustable white powder-coated display screens enhance product presentation.
- ♦ Dual and medium temperature applications are available.
- ♦ Gas defrost.

Specifications are subject to engineering changes without notice.



Model	Case Length	Description	Capacity in Cubic Feet
NMF	6' • 8' • 12'	Solid Front Single-Deck Frozen Food, standard coil	12.3 • 16.4 • 24.6
NMFG	6' • 8' • 12'	Glass Front Single-Deck Frozen Food, standard coil	13.1 • 17.5 • 29.2



Frozen Foods