

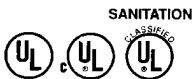
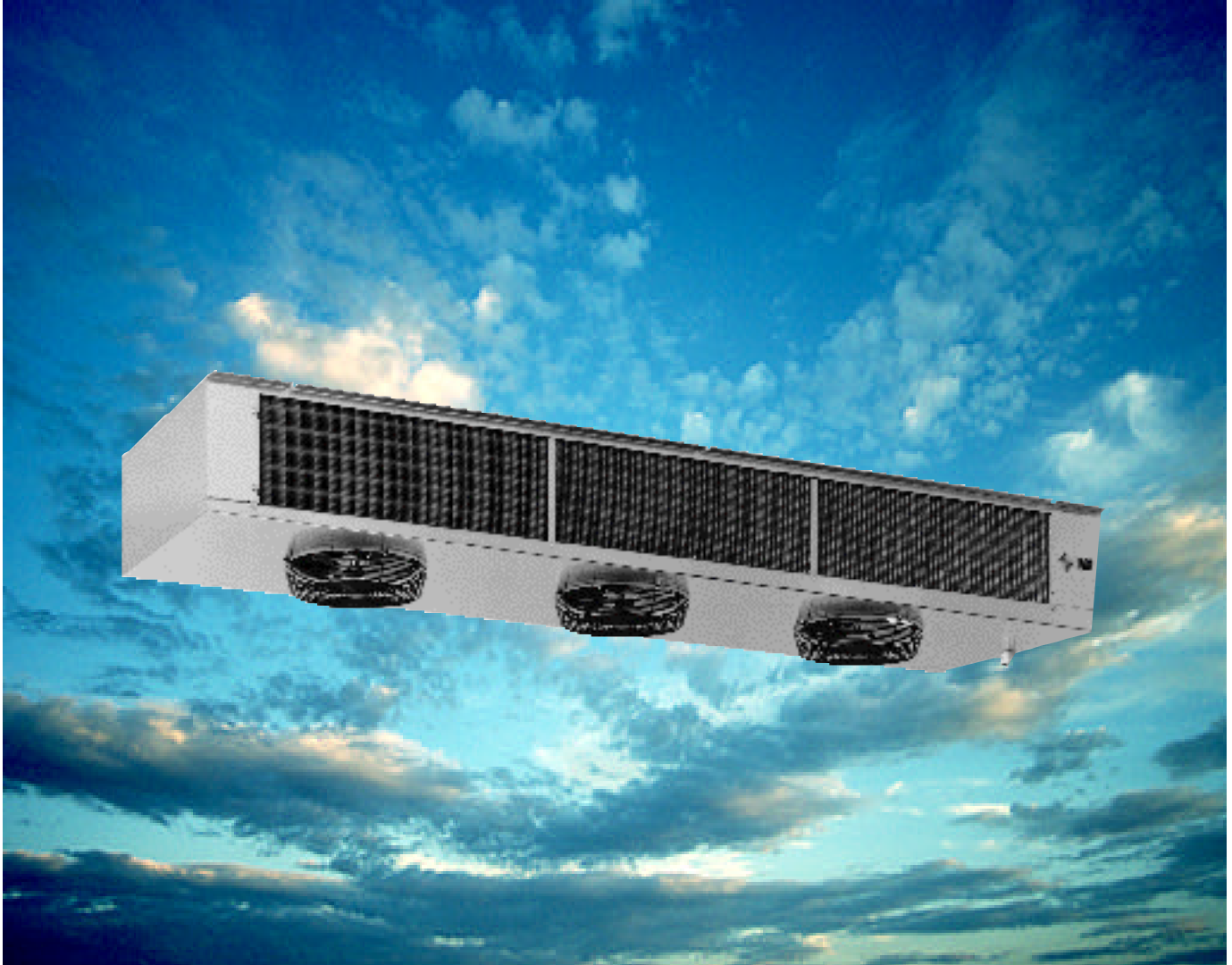


Witt

Easy-Flo

**Low Air Velocity
Unit Cooler**

Catalog 430

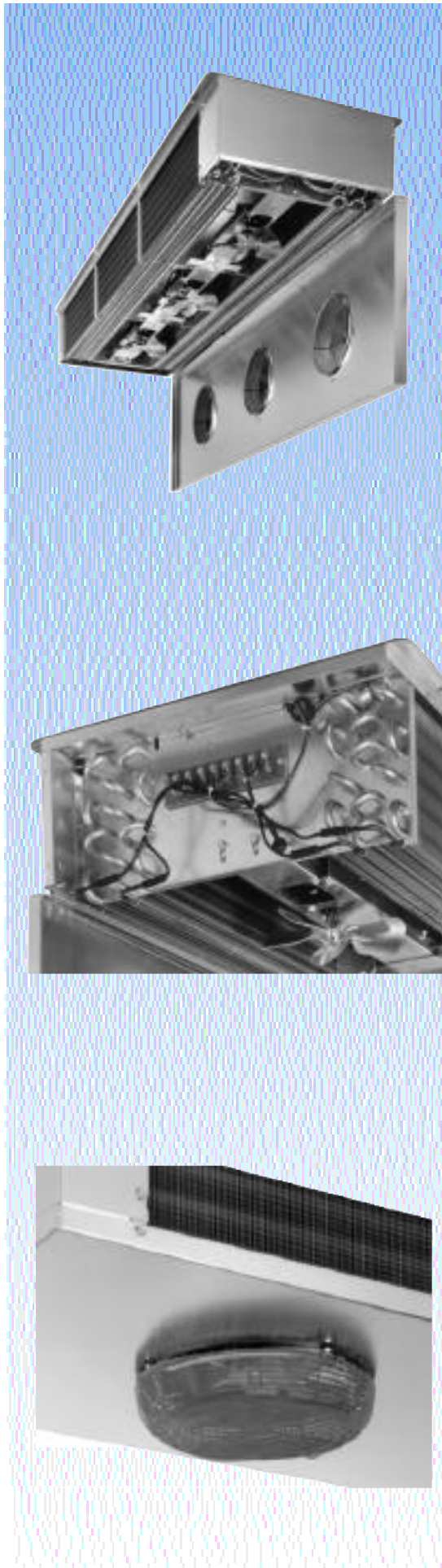


Great Design – Featuring

- 9 Models - 5000 to 34000 BTUH
- Ultra-Quiet Motor Mounting
- Mill-Finish Aluminum Casing
- Ideal for - Fresh Fruits & Vegetables
Meat Prep Rooms
Floral Storage



Witt



Standard Features

Easy Installation

- UL Sanitation listed
- Flush ceiling mount
- Pitched drain pan for level mounting

Full Service Accessibility

- Hinged drain pan
- Removable end panels

U-Section Fan Motor Mounting Rail

- Ultra-quiet motor operation
- Heavy galvanized steel
- Mounted to end plates and tube sheets
- Adds to unit structural strength

All Factory Wiring Run to Numbered Strip

Circuited for New Refrigerants

Internal Expansion Valve Mounting

Performance Data

Model Size	CFM	Capacity in BTUH						
		General Cooler Applications 30° to 45° Room Temperature			Prep Room @ 30° Evaporator Temp. 50° DB/55% RH			
		10° TD	12° TD	15° TD	Sensible Clg.	Total Clg.	Sensible Clg.	Total Clg.
050M	580	5000	6000	7500	9500	10500	11600	14500
075M	800	7500	9000	11250	14200	16200	17400	22200
100M	1110	10000	12000	15000	19000	21200	23200	19100
130M	1720	13000	15600	19500	24700	27600	30200	37800
160M	1720	16000	19200	24000	30400	35100	37200	47600
190M	2330	19000	22800	28500	36100	41000	44100	55900
220M	2290	22000	26400	33000	41800	48300	51100	65500
270M	2860	27000	32400	40500	51300	59500	62700	80500
340M	3420	34000	40800	51000	64600	75200	79000	101700

Ordering Information

All stock unit coolers are circuited for operation from 9° to 12° TD. Special circuiting may be required for other TD's. Please contact factory.

Please Specify:

- Model Number
- Motor electrical-volts/hertz/phase
- Heater electrical-volts/phase
- Evaporator temperature - °F
- Design TD or operating capacity
- Liquid temp. at TX valve (100° F is standard)
- Refrigerant

Applications

EFA units are suitable for rooms +35° F & above
EFE & EFG units are suitable for rooms +28° F & above

Refrigerants

All stock units are suitable for R-22, 134a, 404A, 502, 507, R401A (MP-39) and R402A (HP80)

50 Hertz Power

Divide the BTUH requirement by 0.92, then select the unit cooler directly from the table above.

Air Throw

Up to 15 feet based on 9' ceiling and no obstructions

Electrical Data

Model Size	No. Motors	Motor Data †						Defrost Heater Data - EFE Only		
		115/1/60		208-230/1/60		460/1/60		Amps - 60 Hz		Total Watts
		Total Amps	Total Watts	Total Amps	Total Watts	Total Amps	Total Watts	208-230V 1 Ph	460V 1 Ph	
050M	1	1.6	108	0.9	108	0.5	139	4.3	2.2	1000
075M	2	3.2	216	1.8	216	1	278	4.3	2.2	1000
100M	2	3.2	216	1.8	216	1	278	4.3	2.2	1000
130M	3	4.8	324	2.7	324	1.5	417	10.4	5.2	2400
160M	3	4.8	324	2.7	324	1.5	417	10.4	5.2	2400
190M	4	6.4	432	3.6	432	2	556	10.4	5.2	2400
220M	4	6.4	432	3.6	432	2	556	10.4	5.2	2400
270M	5	8	540	4.5	540	2.5	695	17.4	8.7	4000
340M	6	9.6	648	5.4	648	3	834	21.7	10.9	5000

† Standard Motors

1/30 HP (1/20 HP on 460 v.), 1550 RPM, shaded-pole. Optional PSC motors are available — contact factory.

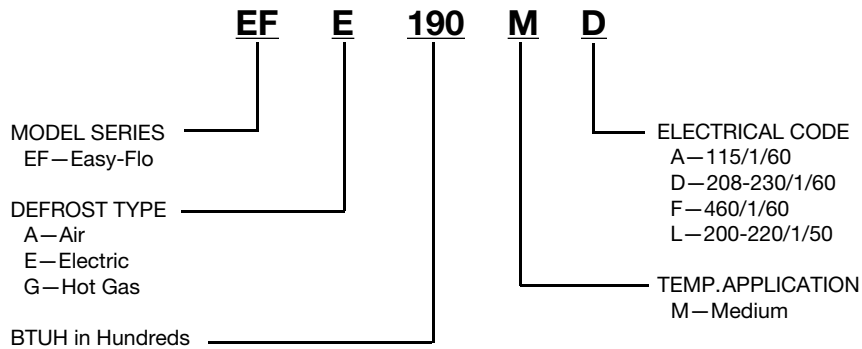
50 Hertz Power

208-230 volt units are suitable for 50 HZ voltage from 187-220. Contact factory if job site voltage is beyond this range.

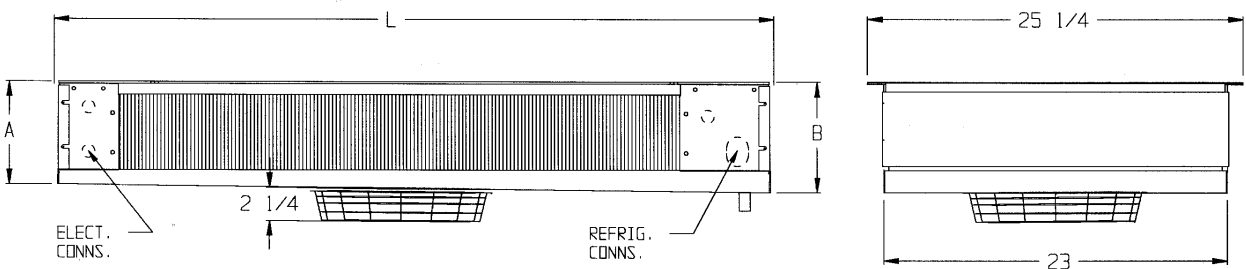
50 HZ motor watts = 60 HZ. motor watts x 0.83



Nomenclature



Dimensional Drawing



Dimensional Data

Model Size	Dimensions in Inches						Suction Conn. * ODM	Approx. R-22 Charge	Approx. Shipping Weight
	A	B	Mounting Slot Centers			L			
			C	D	E				
050M	7	7 1/12	35	—	—	48	7/8	2.6	76
075M	7	7 3/4	54	—	—	67	7/8	5.0	117
100M	7	7 3/4	54	—	—	67	7/8	5.0	120
130M	8 1/2	9 3/8	—	36	—	85	1 1/8	6.1	149
160M	10	10 7/8	—	36	—	85	1 1/8	9.8	171
190M	13	13 7/8	—	36	—	85	1 1/8	9.8	182
220M	13	13 7/8	—	36	—	85	1 1/8	13.0	201
270M	13	14	—	41 1/2	—	96	1 3/8	14.9	260
340M	13	14 1/4	—	—	35 11/16	120	1 3/8	17.7	344

*Other Connection Sizes

Liquid — 1/2" ODM	Drain — 3/4" FPT
Hot Gas — 1/2" ODM	Ext. Equal. — 1/4" ODM