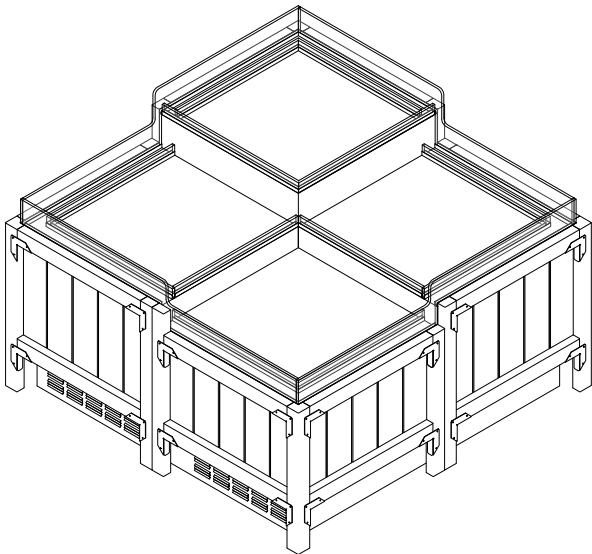




GENERAL NOTES:

- "---" Indicates that the feature is not an option on this case model and/or the data is not yet available at this time.



SHIPPING WEIGHT	
Case	Weight
OB-SC	---

OB-SC

Rev. Date	Rev. #	Rev. Title
07-01-21	6	DATA UPDATE
06-01-21	5	END VIEW UPDATE



**SYSTEM REQUIREMENTS**

Case Length	Volts	Phase	Total Amps	Minimum Circuit Ampacity	Maximum Overcurrent Protection
1 Tier	120	1	6.03	7.36	12.66
2 Tier	120	1	9.23	11.33	19.73
4 Tier	120	1	18.46	20.56	28.96
2 Tier	120/208	1	5.30	6.63	11.93
4 Tier	120/208	1	8.40	10.50	18.95

ELECTRICAL DATA

Case Length	Fans Per Case	Volts	High Efficiency Fans	
			Amps	Watts
1 Tier	1	120	0.30	25
2 Tier	1	120	0.30	25
4 Tier	2	120	0.60	50

GUIDELINES AND CONTROL SETTINGS

Case Length	24hr Energy Usage (kWh/ft)	Discharge Air (°F)	Discharge Air Velocity (FPM)
1 Tier	7.13	28	117*
2 Tier	10.00	28	170
4 Tier	20.00	28	150 - 170

CONDENSING UNIT DATA

Case Length	Volts	Phase	BTUHS	RLA (Amps)	LRA (Amps)	Refrig.	Qty	Grams	Condenser Fans	
									Amps	Watts
1 Tier	120	1	2734	5.3	32.0	R290	1	126	0.43	25
2 Tier	120	1	3533	8.4	41.5	R290	1	88	0.53	30
4 Tier	120	1	3533	8.4	41.5	R290	2	88	0.53	30

DEFROST CONTROLS

Defrosts Per Day	Run-Off Time (Min)	Electric Defrost		Timed-Off Defrost		Hot Gas Defrost	
		Fail-Safe (Min)	Termination Temp (°F)	Fail-Safe (Min)	Termination Temp (°F)	Fail-Safe (Min)	Termination Temp (°F)
6	---	---	---	45	46	---	---

NOTES:

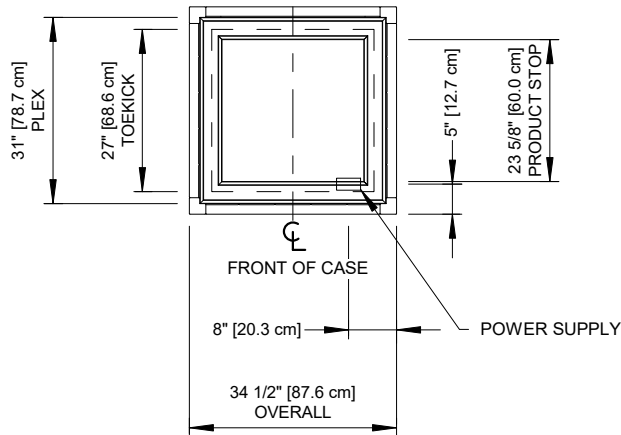
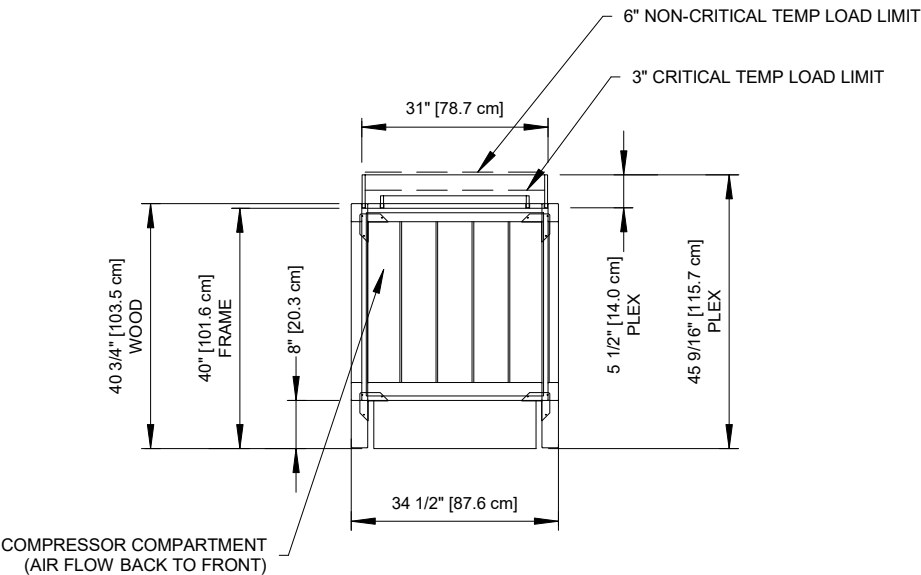
- "—" Indicates that the feature is not an option on this case model and/or the data is not yet available at this time.
- Listed discharge air velocity represents the average velocity at the peak of defrost measured from front facing discharge wall vents to lower tier.
- RLA - Running Load Amps
- LRA - Locked Rotor Amps
- Discharge air velocity measured from deck perforations.

**OB-SC**

ALL MEASUREMENTS ARE TAKEN PER ASHRAE-72-2005 SPECIFICATIONS. HILLPHOENIX REFRIGERATED DISPLAY CASES FOR SALE IN THE UNITED STATES MEET OR EXCEED DEPARTMENT OF ENERGY 2017 REQUIREMENTS.

Rev. Date	Rev. #	Rev. Title
07-01-21	6	DATA UPDATE
06-01-21	5	END VIEW UPDATE





NOTES:

- Shown with optional wood cladding.

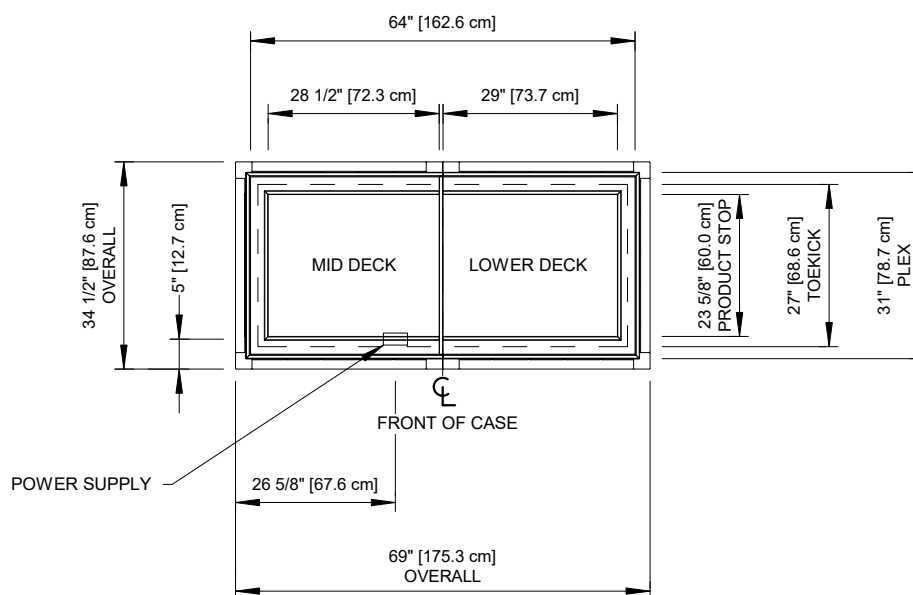
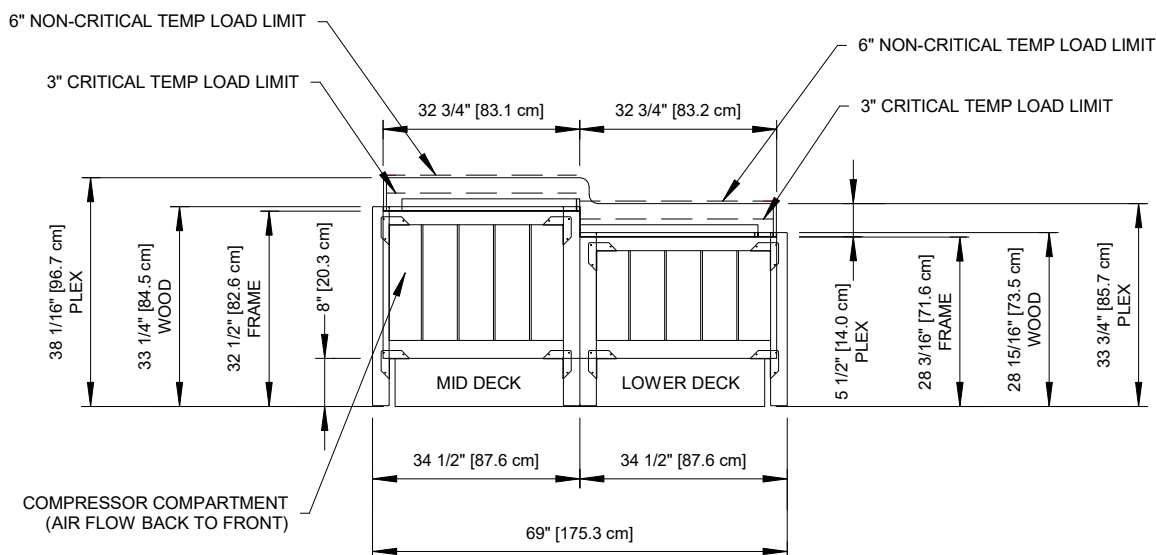


ALL MEASUREMENTS ARE TAKEN PER ASHRAE-72-2005 SPECIFICATIONS. HILLPHOENIX REFRIGERATED DISPLAY CASES FOR SALE IN THE UNITED STATES MEET OR EXCEED DEPARTMENT OF ENERGY 2017 REQUIREMENTS.

OB-SC

Rev. Date	Rev. #	Rev. Title
07-01-21	6	DATA UPDATE
06-01-21	5	END VIEW UPDATE



**NOTES:**

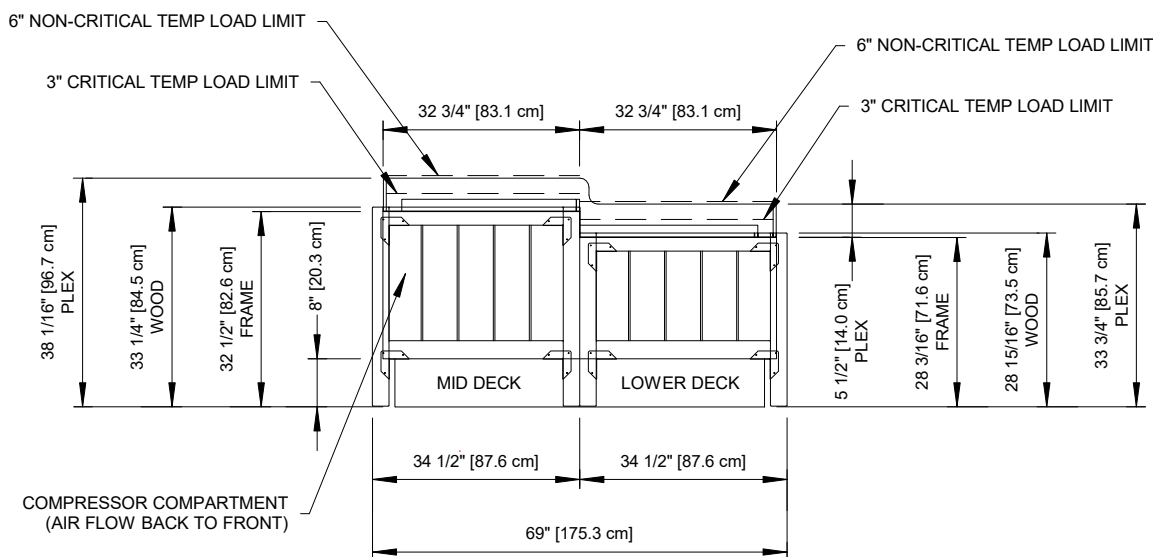
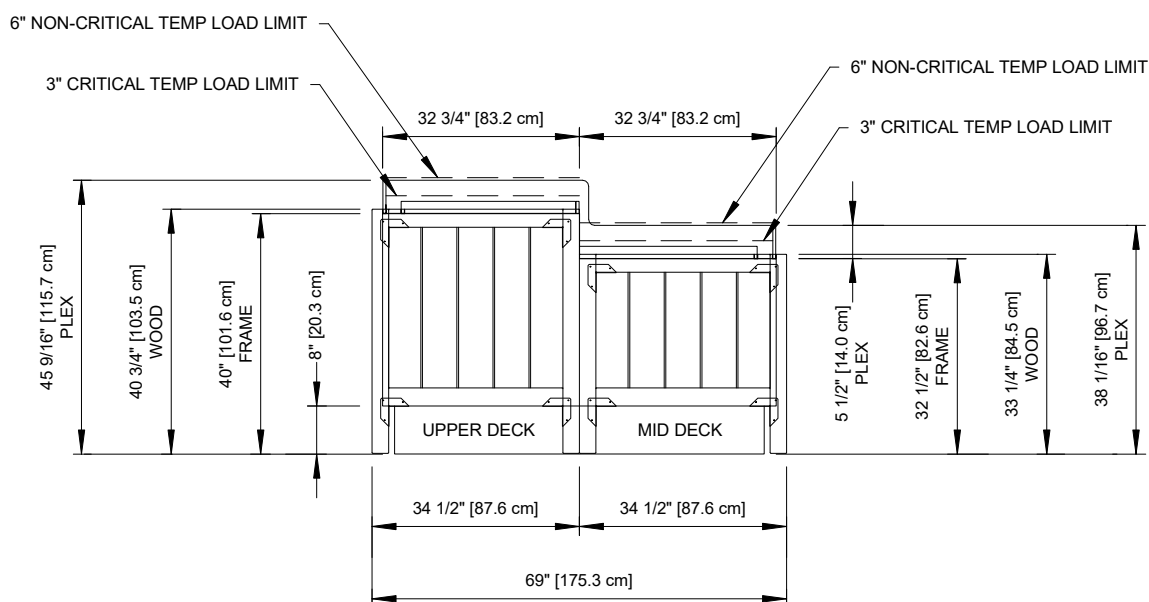
- Shown with optional wood cladding.

**OB-SC**

Rev. Date	Rev. #	Rev. Title
07-01-21	6	DATA UPDATE
06-01-21	5	END VIEW UPDATE



ALL MEASUREMENTS ARE TAKEN PER ASHRAE-72-2005 SPECIFICATIONS. HILLPHOENIX REFRIGERATED DISPLAY CASES FOR SALE IN THE UNITED STATES MEET OR EXCEED DEPARTMENT OF ENERGY 2017 REQUIREMENTS.



NOTES:

- Shown with optional wood cladding.



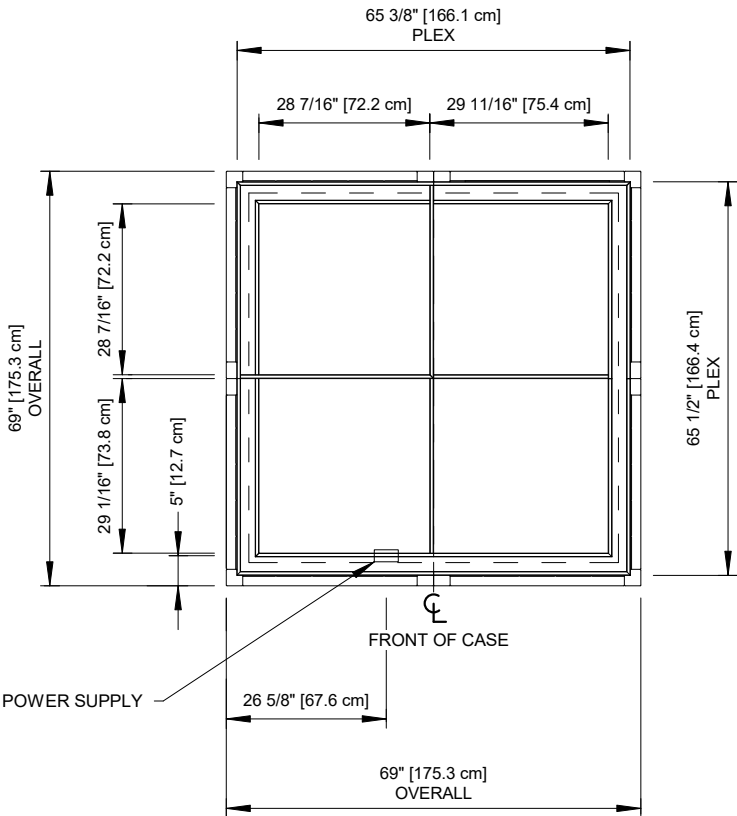
OB-SC



ALL MEASUREMENTS ARE TAKEN PER ASHRAE-72-2005 SPECIFICATIONS. HILLPHOENIX REFRIGERATED DISPLAY CASES FOR SALE IN THE UNITED STATES MEET OR EXCEED DEPARTMENT OF ENERGY 2017 REQUIREMENTS.

Rev. Date	Rev. #	Rev. Title
07-01-21	6	DATA UPDATE
06-01-21	5	END VIEW UPDATE





ALL MEASUREMENTS ARE TAKEN PER ASHRAE-72-2005 SPECIFICATIONS. HILLPHOENIX REFRIGERATED DISPLAY CASES FOR SALE IN THE UNITED STATES MEET OR EXCEED DEPARTMENT OF ENERGY 2017 REQUIREMENTS.

OB-SC

Rev. Date	Rev. #	Rev. Title
07-01-21	6	DATA UPDATE
06-01-21	5	END VIEW UPDATE

