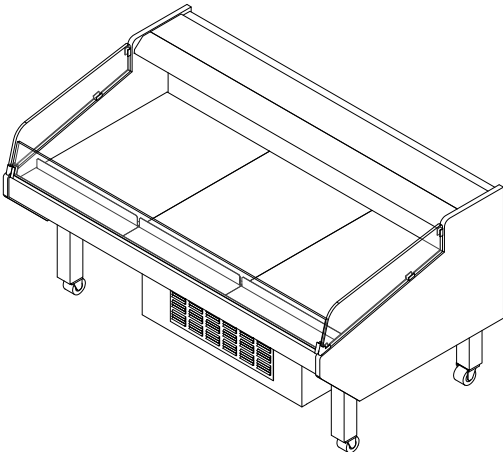




GENERAL NOTES:

- "---" Indicates that the feature is not an option on this case model and/or the data is not yet available at this time.



SHIPPING WEIGHT	
Case	Weight
HSON-SC	---

HSON-SC

Rev. Date	Rev. #	Rev. Title
01-11-21	1	NEW STANDARDS



SYSTEM REQUIREMENTS

Case Length	Volts	Phase	Total Amps	Minimum Circuit Ampacity	Maximum Overcurrent Protection
4'	120	1	7.47	9.0	15
6'	120	1	12.46	13.8	20

SYSTEM REQUIREMENTS

Case Length	Volts	Phase	Total Amps	Minimum Circuit Ampacity	Maximum Overcurrent Protection
4'	120/208	1	6.10	7.6	15
6'	120/208	1	6.43	7.8	15

ELECTRICAL DATA

Case Length	Fans Per Case	High Efficiency Fans		Anti-Condensate Fans		Drain Pumps	
		120 Volts		120 Volts		120 Volts	
		Amps	Watts	Amps	Watts	Amps	Watts
4'	2	0.60	50	---	---	---	---
6'	2	0.60	50	---	---	---	---

LIGHTING DATA

Case Length	Lights Per Row	Light Length	Clearvoyant 4 LED Lighting (Per Light Row)			
			Standard Power (Cornice or Shelf)		High Power (Cornice)	
			120 Volts		120 Volts	
			Amps	Watts	Amps	Watts
4'	1	3'	0.04	4.7	0.10	11.9
6'	1	5'	0.06	7.5	0.15	18.5

GUIDELINES AND CONTROL SETTINGS

Case Length	24hr Energy Usage (kWh/ft)	Discharge Air (°F)	Discharge Air Velocity (FPM)
4'	9.82	28 - 30	206
6'	15.60	28 - 30	169

NOTES:

- "—" Indicates that the feature is not an option on this case model and/or the data is not yet available at this time.
- Listed discharge air velocity represents the average velocity at the peak of defrost.
- RLA - Running Load Amps
- LRA - Locked Rotor Amps



HSO-SC

ALL MEASUREMENTS ARE TAKEN PER ASHRAE-72-2005 SPECIFICATIONS. HILLPHOENIX REFRIGERATED DISPLAY CASES FOR SALE IN THE UNITED STATES MEET OR EXCEED DEPARTMENT OF ENERGY 2017 REQUIREMENTS.

Rev. Date	Rev. #	Rev. Title
01-11-21	1	NEW STANDARDS





CONDENSING UNIT DATA										
Case Length	Volts	Phase	BTUHs	RLA (Amps)	LRA (Amps)	Qty	Refrig.	Grams	Condenser Fans	
									Amps	Watts
4'	120	1	4495	6.1	42	1	R290	144	0.53	30
6'	120	1	2734	5.3	32	2	R290	122	0.43	25

DEFROST CONTROLS							
Defrosts Per Day	Run-Off Time (Min)	Electric Defrost		Timed-Off Defrost		Hot Gas Defrost	
		Fail-Safe (Min)	Termination Temp (°F)	Fail-Safe (Min)	Termination Temp (°F)	Fail-Safe (Min)	Termination Temp (°F)
6	---	---	---	30	45	---	---



ALL MEASUREMENTS ARE TAKEN PER ASHRAE-72-2005 SPECIFICATIONS. HILLPHOENIX REFRIGERATED DISPLAY CASES FOR SALE IN THE UNITED STATES MEET OR EXCEED DEPARTMENT OF ENERGY 2017 REQUIREMENTS.

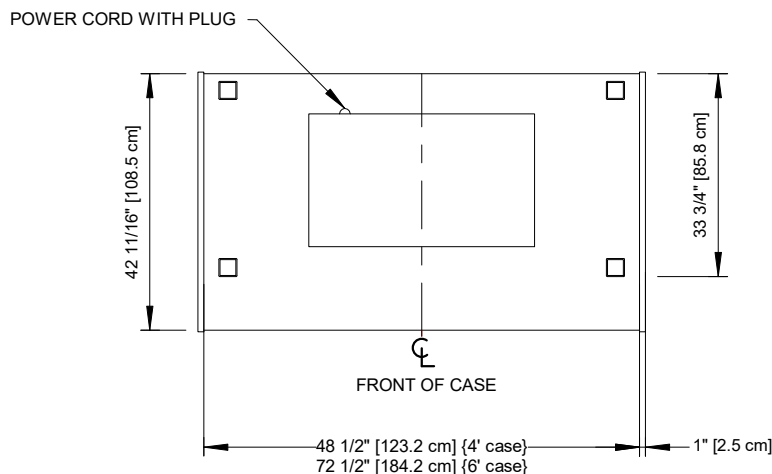
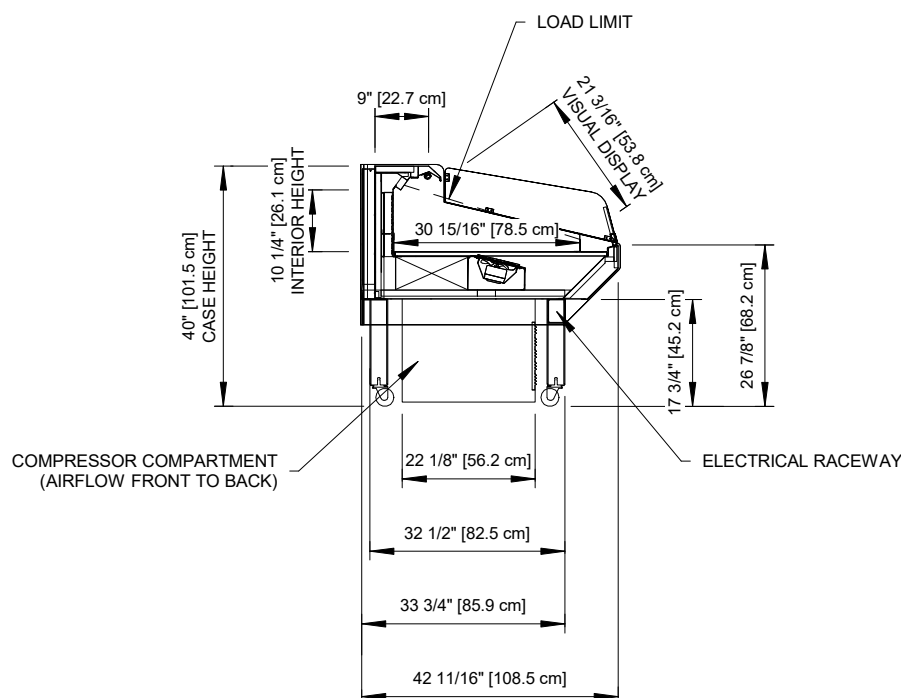
HSO-SC

Rev. Date	Rev. #	Rev. Title
01-11-21	1	NEW STANDARDS



HSON-SC

Self-Service Open Multi-Deck Merchandiser
4' & 6' (Bakery/Beverage/Cheese/Deli/Meat/Produce)



HSON-SC

Rev. Date	Rev. #	Rev. Title
01-11-21	1	NEW STANDARDS



a DOVER company

ALL MEASUREMENTS ARE TAKEN PER ASHRAE-72-2005 SPECIFICATIONS. HILLPHOENIX REFRIGERATED DISPLAY CASES FOR SALE IN THE UNITED STATES MEET OR EXCEED DEPARTMENT OF ENERGY 2017 REQUIREMENTS.