

Hillphoenix.

Dover Food Retail
2016 Gees Mill Road
Conyers, GA 30013
844.591.5937
www.hillphoenix.com

©2021 Hillphoenix, Inc.

Hillphoenix.

DOVER
FOOD RETAIL

**The
SFC
Group**

*Solutions for
convenience sake*



CF-SC R-290

Self-Service Multi-Deck

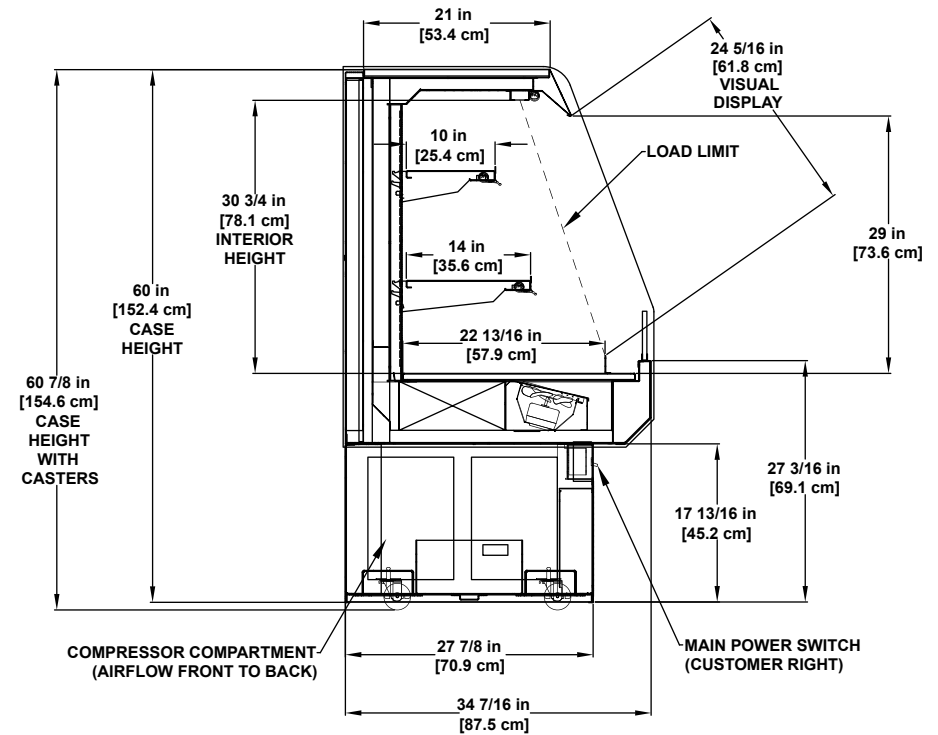
Medium temperature general merchandiser.

DOVER
FOOD RETAIL

SFC-CF-SC_R-290_v0921

 **SECOND NATURE[®]**
NATURAL

CF-SC R-290 Self-Service Multi-Deck



This self-contained models utilize Second Nature® NATURAL environmentally friendly R-290 hydrocarbon refrigerant that has zero (0) ozone depletion potential (ODP) and three (3) global warming potential.

Listed for NSF Type 2.



Please consult Hillphoenix Engineering Reference Manual for dimensions, plan views and technical specifications. Specifications are subject to change without notice. Certified to UL 471 and ANSI/NSF standard 7.

Designed for optimal performance in store environments where temperatures and humidity do not exceed 80°F and 55%R.H.

Featured Laminates



Base Model Features

- Case length: 4'.
- Closed base construction with leveling pads.
- Case dimensions: 60"H and 34-7/16"D.
- 17-3/16"H painted black metal base, front and sides.
- Painted metal exterior.
- Outside back and 21"D case top painted to match exterior.
- Stainless steel exterior trim.
- 5-1/2"H x 1/2" thick polished, straight die board plex.
- Painted matte black metal interior and trim.
- (1) row Clearvoyant® LED canopy top light.
- (1) row each 10" and 14" non-lighted adjustable angled (0°, 5° and 15°) black painted metal shelving with black price tag molding with 3" polycarbonate product stop.
- Painted black metal, flat bottom deck with 2" metal product stop.
- Solid end panels with mirror-polished, stainless steel interior.
- Main power switch and on/off light switch.
- Solar digital thermometer.
- Refrigeration: R-290, high-efficiency fan motors, and digital temperature control with automatic defrost.
- Stainless steel removable mesh condenser filter.
- Front electrical raceway.
- Front to back airflow.
- 6' Cord and plug.

Available Options

- No miters or wedges available.
- Exterior finishes: Exterior grade laminate, additional paint colors or stainless steel.
- White or stainless steel case interior.
- Additional 12" adjustable angled (0°, 5° and 15°) black painted metal shelf with black price tag molding with 3" polycarbonate product stop.
- Clearvoyant® LED under shelf lighting.
- Cart bumper mounted on front panel of case.
- Cart bumper added to end panels.
- Recessed casters.
- Retractable night curatin with or without locking feature.
- Polycarbonate night cover.
- Lift gate shipping option.

Fast Facts...

- The LED lighting, combined with the flexibility of adjustable shelves, provides a superior product visibility design allowing the customer to see the product at a distance while always keeping it in the refrigerated zone at the desired NSF temperature.
- Built-in, rear condenser chimney exhaust provides flexibility in placement of the display case and improved shopper comfort with heat released from the top of the chimney.
- Easy-to-remove painted or stainless metal interior parts ensure ease of case cleaning piece-by-piece without tools for improved food safety, reduced labor costs and a sanitary environment ready to be merchandised.